

WALK-BEHIND TROWEL

E-TROWEL



SAFETY, OPERATIONS & PARTS MANUAL

Manual Part #: 081135 | Revision: B
Language: English | Original Instructions



Walk Behind Trowel

Safety, Operations & Parts Manual

This manual covers the Walk Behind model listed below:

<u>Part No.</u>	<u>Description</u>
-	E-Trowel, Battery Powered Walk-behind Trowel, 37"

NOTICE

READ BEFORE USE

This manual, or a copy of it, must be kept with the machine at all times.

ALL INFORMATION, SPECIFICATIONS, AND ILLUSTRATIONS IN THIS MANUAL ARE SUBJECT TO CHANGE WITHOUT NOTICE AND ARE BASED ON THE LATEST INFORMATION AT THE TIME OF PUBLICATION.

Unit Identification Plate Location:

An identification plate listing the model number and the serial number is attached to each unit. This plate should not be removed at any time.

Please record the information found on this plate below so it will be available should the identification plate become lost or damaged. When ordering parts or requesting service information, you will always be asked to specify the model and serial numbers of the machine.

FILL IN FOR FUTURE REFERENCE

Model Number:	_____
Serial Number:	_____
Date Purchased:	_____
Purchased From:	_____

Limited Warranty & Limitation of Liability

I. LIMITED WARRANTY & LIMITATION OF LIABILITY

Allen Engineering Corporation (“Allen”) warrants its products to be free of defects in material or workmanship for: TWO YEARS FROM END USER’S DATE OF PURCHASE, SUBJECT TO THE EXCEPTIONS AND SHORTER WARRANTY PERIODS DESCRIBED HEREIN.



The warranty period begins on the date of purchase by the End User of the product. All warranty is based on the following limited warranty terms and conditions, including the disclaimer of all implied warranties of any type and the disclaimer of consequential damages.

1. Allen’s obligation and liability under this warranty are limited to repairing or replacing parts if, after Allen’s inspection, there is determined to be a defect in material or workmanship. Allen reserves the choice to repair or replace.
2. All warranty-related parts must be purchased in advance through an Allen dealer. The parts will be made available to the Allen Distributor, Dealer, or Rental Center from whom the End User purchased the product.
For machines being prepared, a warranty request form and/ or RGA request form must be submitted to AEC after the repairs are completed.
3. Replacement warranty parts, installed in the product, are warranted only for the remainder of the warranty period of the product as though they were the original parts.
4. BATTERY POWERED PRODUCTS ARE WARRANTED FOR ONE YEAR FROM END USER’S DATE OF PURCHASE.
5. Allen does not warranty engines or batteries. Engine warranty claims should be made directly to an authorized factory service center for the particular engine manufacturer. Batteries are not warranted due to unknown treatment during transport, etc., and any battery claims should be directed to the battery manufacturer.
6. Allen’s warranty does not cover the normal maintenance of products or their components(such as engine tune-ups and oil & filter changes). The warranty also does not cover normal wear and tear items(such as belts, tires, blades, pans and other consumables).
7. Hydraulic Component’s are required to be maintained per Allen’s mandatory service intervals in each machines owners manual. OEM Allen hydraulic filters and consumables are required to service machines during the warranty period. Failure to use OEM Allen hydraulic filters will result in denied warranty.
8. Allen’s warranty will be void if it is determined that the defect resulted from operator abuse, failure to perform normal maintenance on the product, modification to product, alterations, or repairs made to the product without the written approval of Allen. Allen specifically excludes from warranty any damage to any trowels resulting from a drop or impact to the rotors.
9. Impact damage to gearboxes is not covered under the Allen warranty and is deemed customer abuse.
10. Impact damage to trowels in any way is not covered under the Allen Warranty and is deemed customer abuse. (Example: Dropping a machine)
11. Allen will pay shop labor on warranty items at the Allen Shop Labor Rate in existence on the date of the warranty claim. An Allen labor chart will determine the time allowed to complete a repair and will govern the shop labor hours that will be allowed.
12. Allen will credit the cost of ground freight on warranty replacement parts after approval of the warranty claim. No warranty replacement parts will be shipped air-freight at the expense of Allen. Allen does not pay any inbound freight.
13. ALLEN ENGINEERING CORPORATION’S WARRANTY POLICY WILL NOT COVER THE FOLLOWING: TAXES; SHOP SUPPLIES; ENVIRONMENTAL SURCHARGES; AIR FREIGHT; TRAVEL TIME;LOSS OF TIME;INCONVENIENCE;LOSS OF RENTAL REVENUE; RENTAL COSTS OF EQUIPMENT USED TO REPLACE THE PRODUCT BEING REPAIRED;LOSS OF USE OF THE PRODUCT; COMMERCIAL LOSS; OR ANY OTHER CHARGES WHATSOEVER OR ANY LIABILITIES FOR DIRECT, INCIDENTAL, OR CONSEQUENTIAL DAMAGE OR DELAY.
14. ALLEN ENGINEERING CORPORATION MAKES NO OTHER WARRANTY, EXPRESSED OR IMPLIED. THIS LIMITED WARRANTY IS IN LIEU OF THE WARRANTY OF MERCHANTABILITY AND FITNESS. THERE ARE NO OTHER WARRANTIES THAT EXTEND BEYOND THE DESCRIPTION ON THIS DOCUMENT.
15. No Allen employee or representative is authorized to change this warranty in any way or grant any other warranty unless such change is made in writing and signed by an officer of Allen Engineering Corporation.
16. Warranty claims must be submitted within 30 days from the date of failure.
17. Once a warranty claim has been submitted, AEC has up to 90 business days to process the request.
18. Standard service part warranty will not exceed 90 days from the date of purchase. Exceptions to this are:
#1 Gearboxes: 1year warranty from date of purchase.
#2 Electrical Components: 30 day warranty from date of purchase. This applies to wiring harnesses, transmitters, ECUs, display screens, and toggle switches.
19. All purchased components are subject to the inspection and warranty of the respective manufacturer. This inspection may extend beyond 90 days.
20. If warranty is suspected do not disassemble any hydraulic or electrical components. Failure to comply with this instruction will lead to denial of a warranty claim.

Welcome to the E-Trowel Machine, a new and improved concrete finisher for the job site, outdoors or indoors, no odor, no fumes... Your new E-Trowel Machine can give you many years of service if you follow these safety precautions and service suggestions to keep it running at its best.

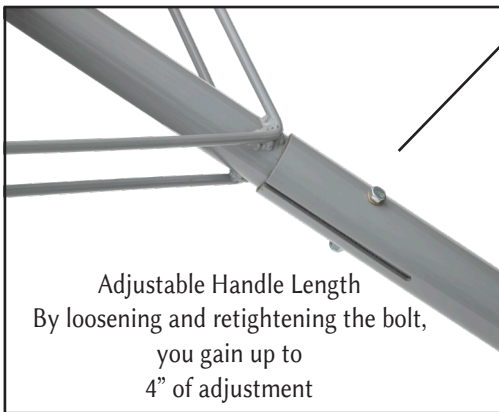
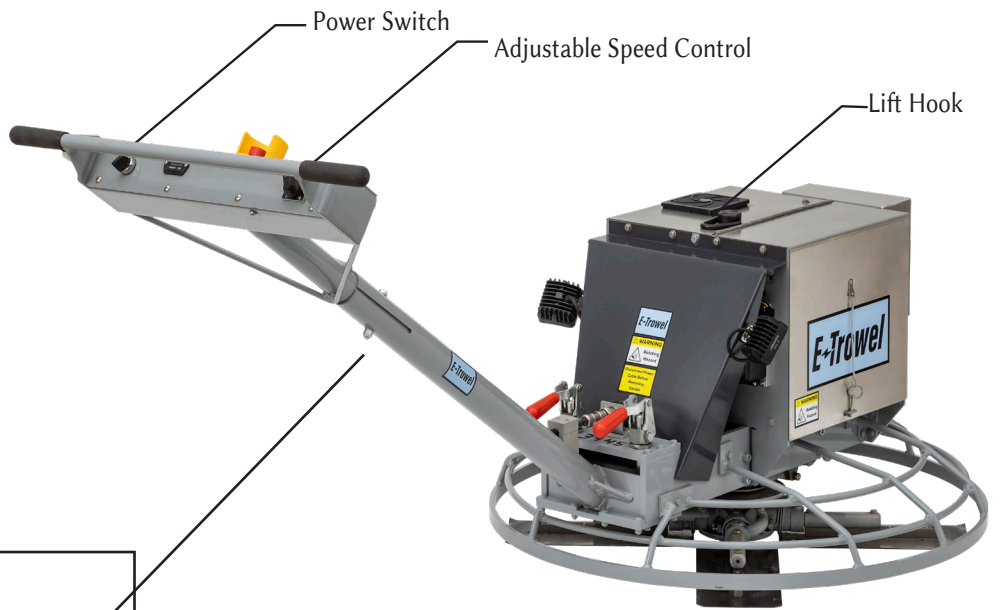
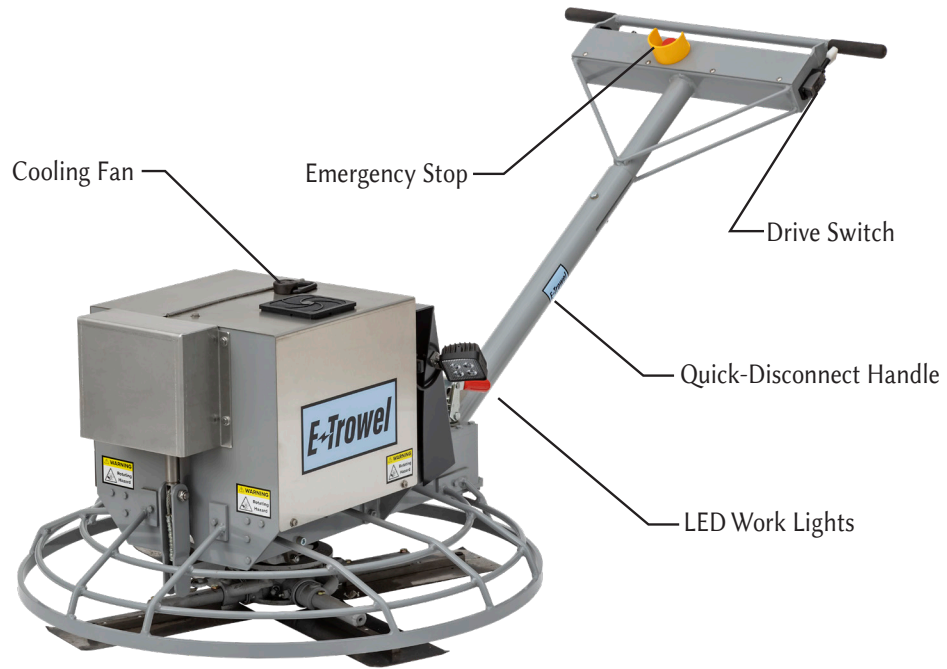
Table of Contents

Warnings and Safety	2
Operator Instructions.....	6
Specs Sheet	7
Service & Maintenance.....	x
Parts Breakdown	x

WARNING!

Failure to follow warnings and safe operating instructions as outlined in this manual can lead to bodily harm or death!

- Never ride on the troweler.
- Keep all objects away from the troweler while operating.
- Rotating parts may cause injury or machine damage if striking objects.
- Always remove the batteries before lifting, tilting, or moving the troweler.
- Use *E-Trowel* batteries and charger only!
- Using non-approved batteries or charger may permanently damage the machine.
- Never allow the troweler to get wet, because water can damage electronics.
- Do not connect the charger to the machine, connect it only to the batteries.
- Use the machine cover when transporting the troweler.



Preparing The Troweler for Use

- Always remove the batteries before lifting, tilting, or moving the troweler.
- The batteries must stay in an upright position at all times.
- Flipping, tilting, or dropping the batteries can cause permanent damage.



Caution! Rotating Hazard

Never place hands or feet inside the safety guard.



Caution! Rotating Parts

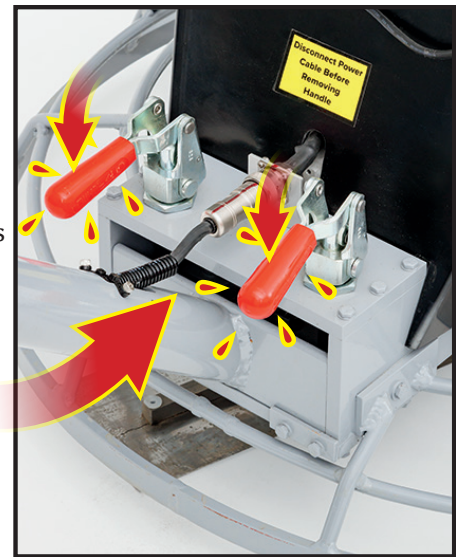
Be sure that all guards and safety features are functioning properly before use.

1. With the troweler located in the work area, install the handle.



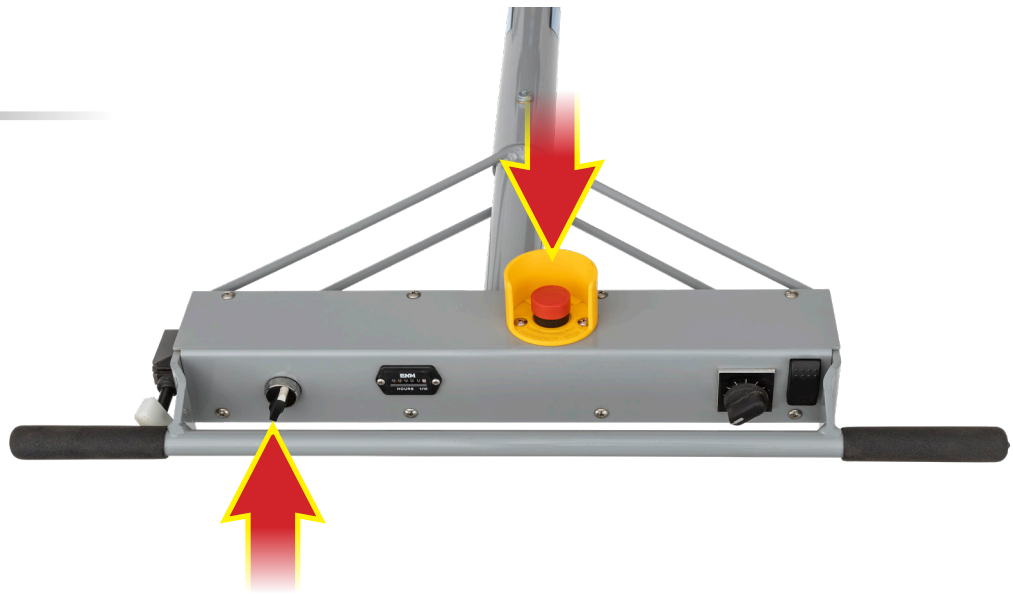
- 2.

Check to make sure the handle is securely attached to the base with the two red clamps firmly pressed in the down position.



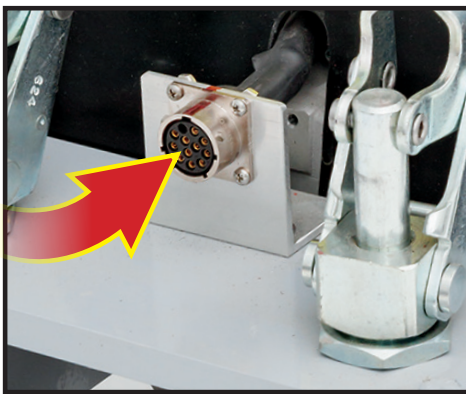
3.

Make sure the Emergency stop is pushed down and the power switch is in the OFF position.



4.

Insert the cable connector into the receiving end on the base and rotate $\frac{1}{4}$ turn clockwise.



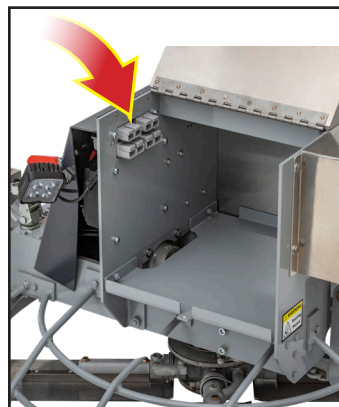
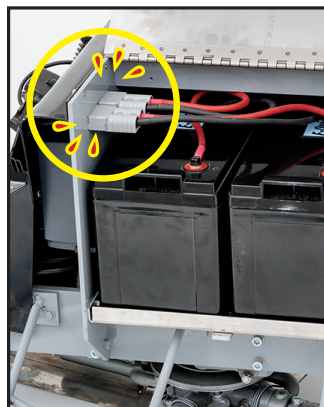
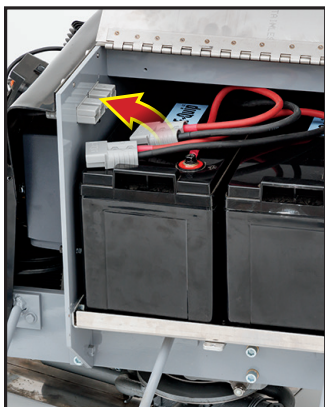
5.

Open the battery cover and place the batteries in the machine, then connect the battery cables.

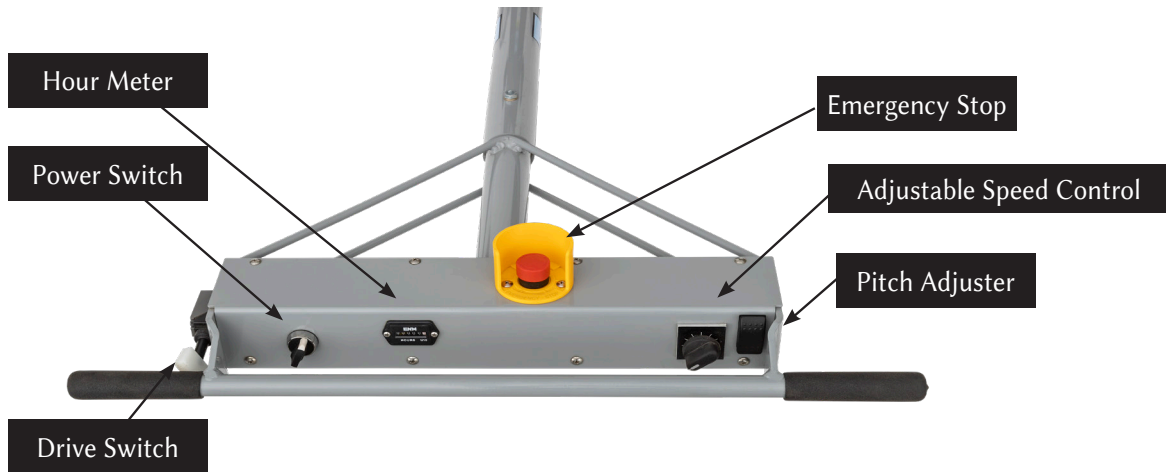
The top outlet is for 2 24v batteries and the bottom outlet is for 1 or 2 48v batteries

6.

Close the battery cover and secure with the latches.



OPERATING THE TROWELER



1. Make sure that the Emergency Stop button is in the up position.
2. Turn the machine speed to 0.
3. Turn the power switch to the ON position.
4. While firmly holding both handles, press the drive switch inward to allow the machine to energize.
5. Select the speed using the speed control.
6. Use the switch to adjust the trowel pitch. **Top=tilt Bottom=flat**
7. After each use, remove the batteries from the machine before moving it from the work area.
8. Recharge the batteries after each use.

- **Always keep the batteries right side up.**
- **Tilting, flipping, or dropping the batteries can cause permanent damage!**
- **Any time the troweler is not in operation, the EMERGENCY STOP should be pushed down and the power switch in the off position.**
- **Never allow the troweler to get wet.**

made in
the USA

TROWELER SPECS

- 48v Machine, Powered by 1 or 2 48v Batteries or 2 24v Batteries
- 155 RPM
- Trowel Machine Weight (Without Batteries): 192 Lb.
- Battery Weight: 41.5 Lb.
- Trowel Machine Height (Excluding Handle): 22.5”
- Total Width: 37”
- Handle Height (Floor To Top Of Extended Handle): 38”
- Extended Handle Length: 51”

FEATURES

- 1 year warranty
- Hour meter
- LED lights
- Quick-disconnect handle
- Variable speed
- Electric pitch adjuster
- Planetary gear system
- Standard 14” blade

Runtime

2-24v Batteries = 8 Hr.

1-48v Battery = 3 Hr

2-48v Batteries = 5.5 Hr.

SERVICE AND MAINTENANCE

Cleaning your machine after each use will contribute greatly to its longevity. Be sure to remove all dirt and debris, using only a brush or rag. Do not use a pressure washer.

Inspect the machine before and after each use for damage and unusual wear.

E-Trowel

69 Lancaster Ave.
Christiana, PA 17509
717-786-0173

SERVICE MANUAL

Table of Contents

Parts List..... 3-6

Service Procedures 7

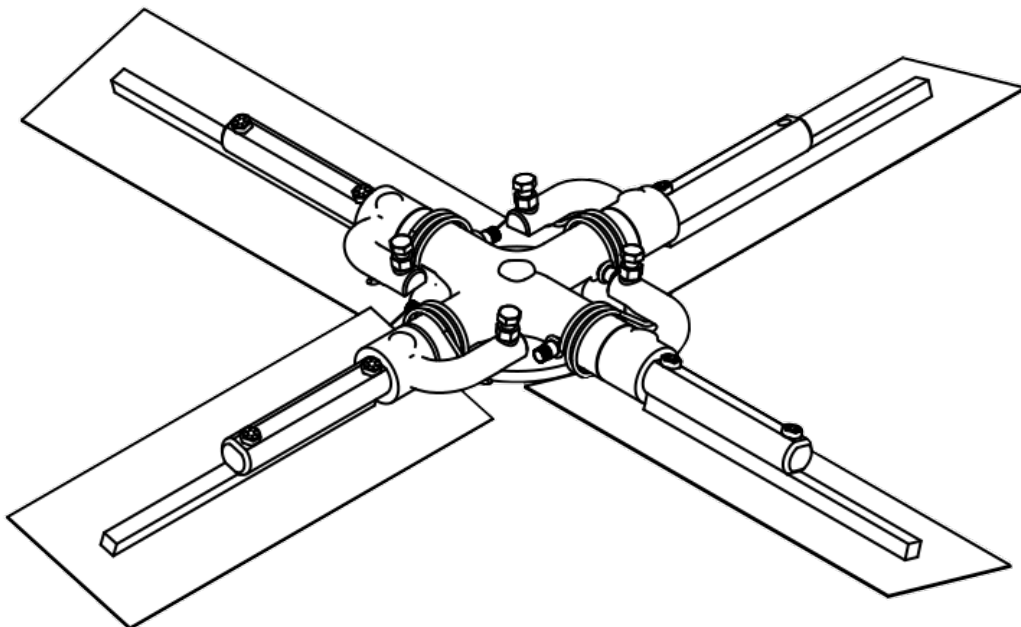
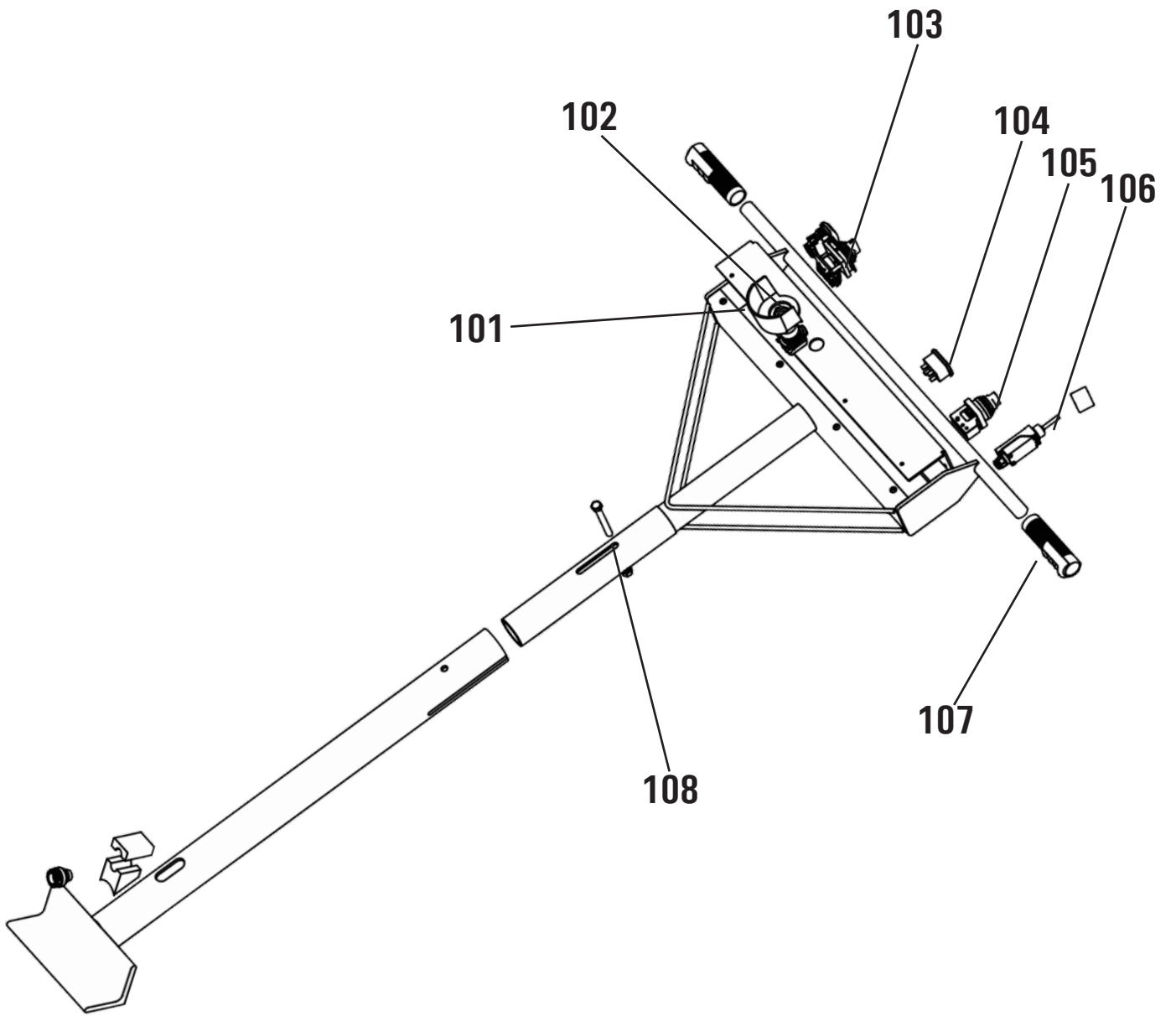
Repair Procedures 8

XXXXXXXXXXXXXXXXX X

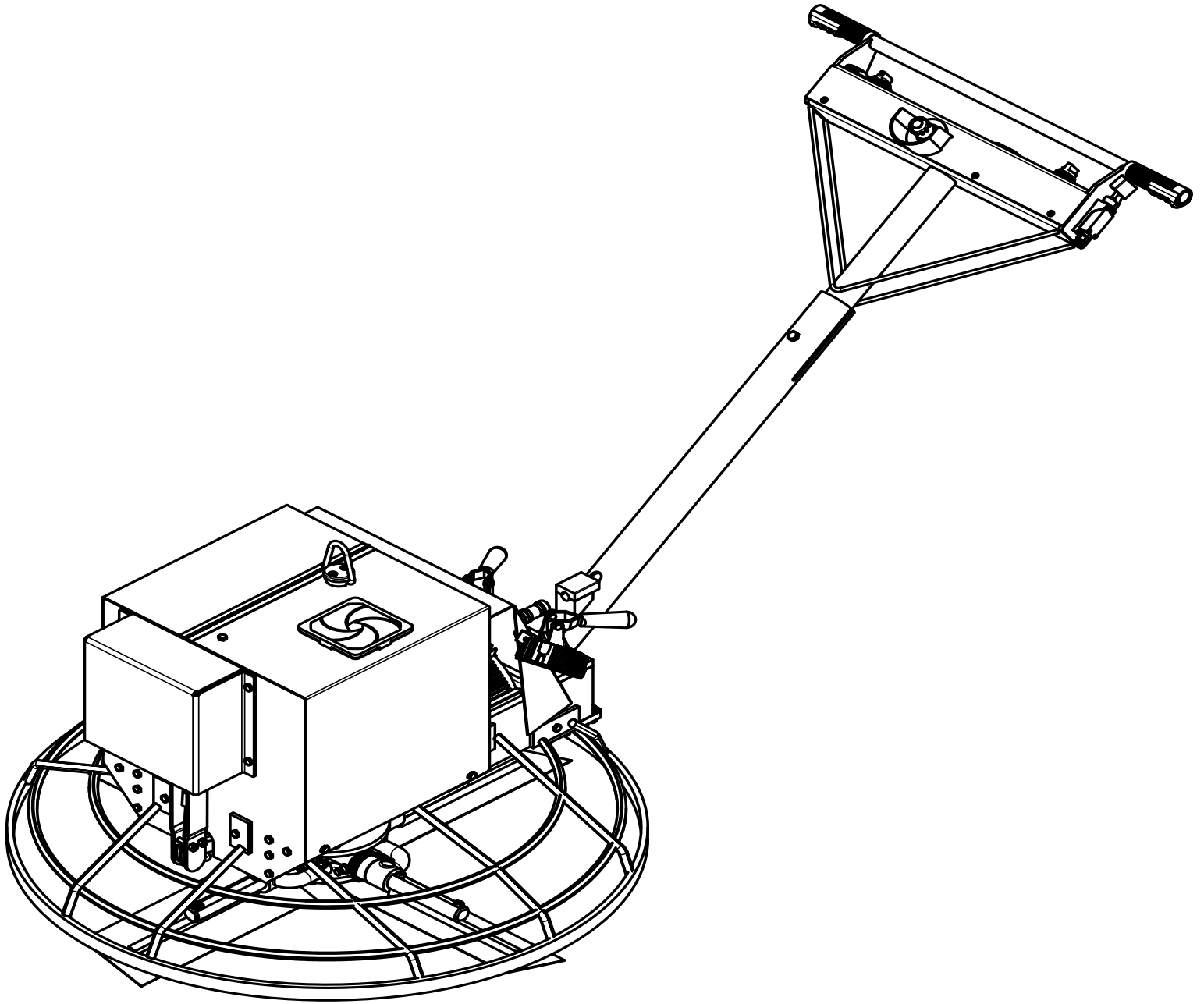
XXXXXXXXXXXXXXXXX X

PARTS LISTS

part #	description
Handle Parts	
101	On-off switch
082151	E-stop
082152	E-stop shield
104	Pot-speed
105	Up/down switch
106	Go switch (AEC 081961)
107	Handle grip
108	Hour meter
109	Female connector
Rotor Parts	
300	Rotor Assembly



part #	description
Troweler Body Parts	
201	Male connector
202	Motor sensor connector
203	48 to 24 connector
204	Term strip
205	Fuse holder
206	125Amp Fuse
207	Fuseholder (2 required)
208	Fuse (2 required)
209	Set of 9 Lugs for #4 Wire
210	Gray connector for battery
211	Lug (4 required)
212	Fan
213	Fan cover
214	Up/down actuator
215	Cable
216	Cable clamp
217	Eye bolt
218	Thimble
219	Hoist ring
220	Lanyard with pin
221	Cover for controls
222	Wire terminals
223	Harness Assembly, Upper controls
224	Harness Assembly, Lower controls



SERVICE PROCEDURES

MONTHLY MAINTENANCE CHECKLIST

- Grease the zerks
- Inspect the plugs for dirt and debris, and clean if necessary
- Inspect the cooling fan for dust and debris and confirm it is in working condition
- Inspect all the switches on the handle for proper operation, and replace them at first sign of non-working functionality
- Lubricate the main shaft

Note: The gearbox is not serviceable

REPAIR PROCEDURES

switches and controls
spider assembly

REVISION HISTORY

Revision B	Adjusted Part Numbers	4/13/26
------------	-----------------------	---------



AEC FACTORY & HEADQUARTERS

819 S. 5TH STREET
PARAGOULD, ARKANSAS 72450
870.236.7751
800.643.0095 (TOLL FREE (USA ONLY))

MAILING

PO BOX 819
PARAGOULD, ARKANSAS 72451

ALLENENG.COM

CONNECT WITH US ON SOCIAL

