

WALK-BEHIND TROWEL

E-TROWEL



SAFETY, OPERATIONS & PARTS MANUAL

Manual Part #: 081135 | Revision: A
Language: English | Original Instructions



Walk Behind Trowel

Safety, Operations & Parts Manual

This manual covers the Walk Behind model listed below:

| <u>Part No.</u> | <u>Description</u> |
|-----------------|---|
| - | E-Trowel, Battery Powered Walk-behind Trowel, 37" |

NOTICE

READ BEFORE USE

This manual, or a copy of it, must be kept with the machine at all times.

ALL INFORMATION, SPECIFICATIONS, AND ILLUSTRATIONS IN THIS MANUAL
ARE SUBJECT TO CHANGE WITHOUT NOTICE AND ARE BASED ON THE LATEST
INFORMATION AT THE TIME OF PUBLICATION.

Unit Identification Plate Location:

An identification plate listing the model number and the serial number is attached to each unit. This plate should not be removed at any time.

Please record the information found on this plate below so it will be available should the identification plate become lost or damaged. When ordering parts or requesting service information, you will always be asked to specify the model and serial numbers of the machine.

FILL IN FOR FUTURE REFERENCE

Model Number: _____

Serial Number: _____

Date Purchased: _____

Purchased From: _____

Welcome to the E-Trowel Machine, a new and improved concrete finisher for the job site, outdoors or indoors, no odor, no fumes... Your new E-Trowel Machine can give you many years of service if you follow these safety precautions and service suggestions to keep it running at its best.

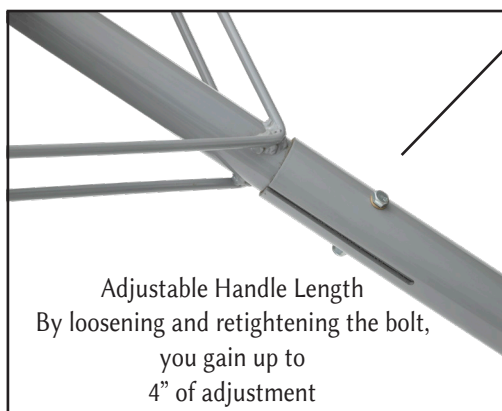
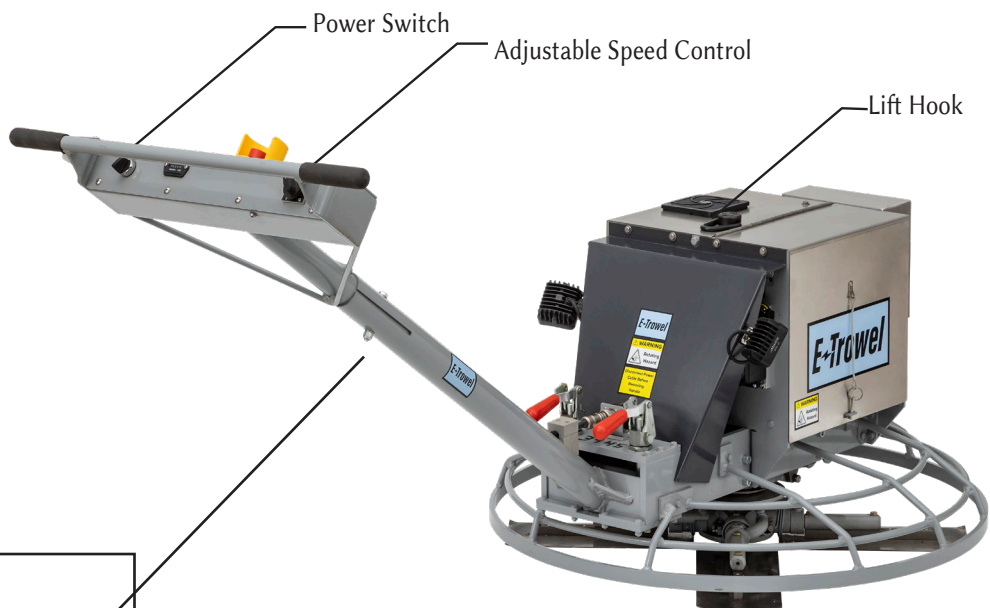
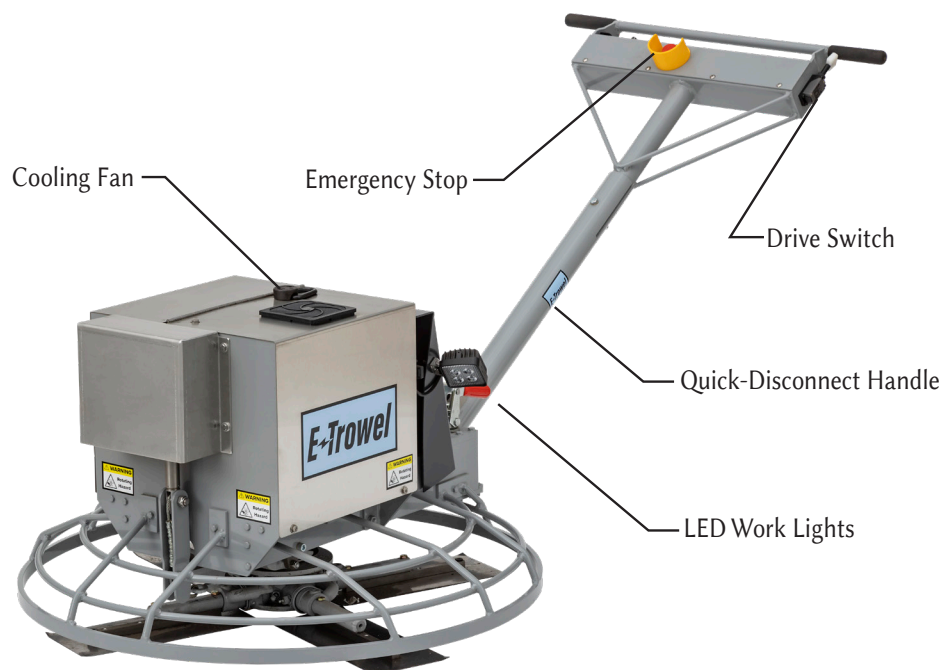
Table of Contents

| | |
|-----------------------------|---|
| Warnings and Safety | 2 |
| Operator Instructions..... | 6 |
| Specs Sheet | 7 |
| Service & Maintenance | x |
| Parts Breakdown | x |

WARNING!

Failure to follow warnings and safe operating instructions as outlined in this manual can lead to bodily harm or death!

- Never ride on the troweler.
- Keep all objects away from the troweler while operating.
- Rotating parts may cause injury or machine damage if striking objects.
- Always remove the batteries before lifting, tilting, or moving the troweler.
- Use *E-Trowel* batteries and charger only!
- Using non-approved batteries or charger may permanently damage the machine.
- Never allow the troweler to get wet, because water can damage electronics.
- Do not connect the charger to the machine, connect it only to the batteries.
- Use the machine cover when transporting the troweler.



Preparing The Troweler for Use

- Always remove the batteries before lifting, tilting, or moving the troweler.
- The batteries must stay in an upright position at all times.
- Flipping, tilting, or dropping the batteries can cause permanent damage.



Caution!

Rotating Hazard

Never place hands or feet inside the safety guard.



Caution!

Rotating Parts

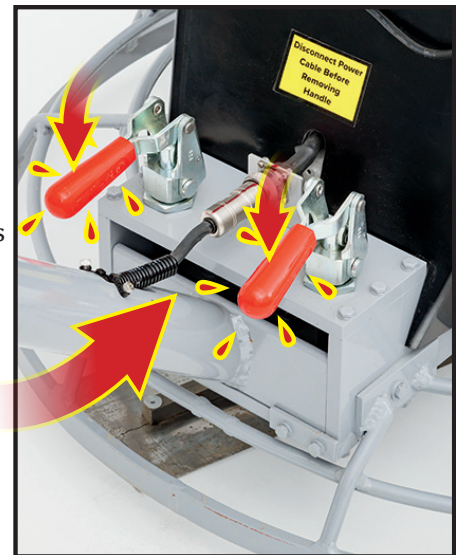
Be sure that all guards and safety features are functioning properly before use.

1. With the troweler located in the work area, install the handle.



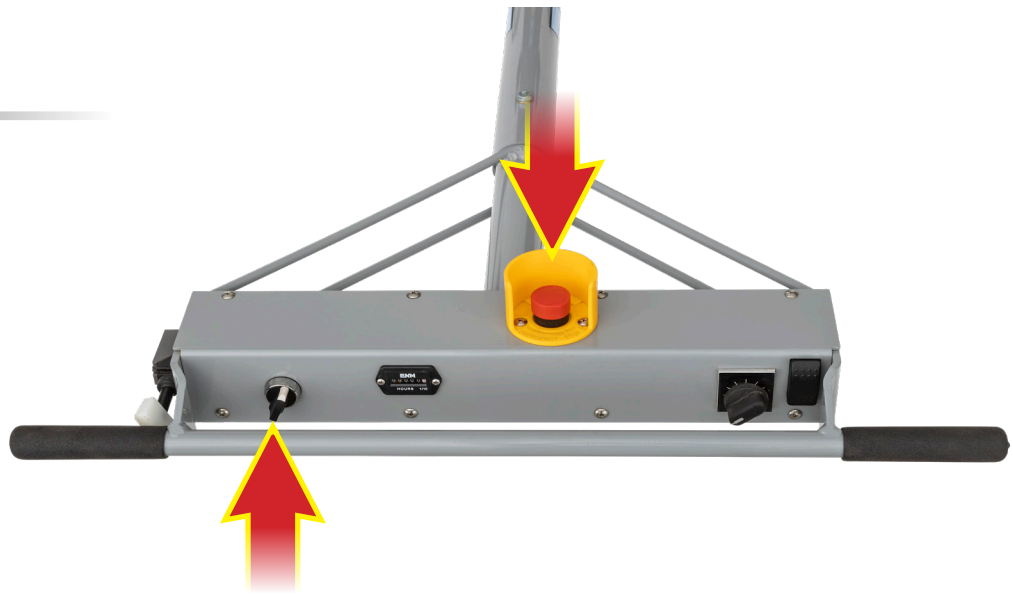
- 2.

Check to make sure the handle is securely attached to the base with the two red clamps firmly pressed in the down position.



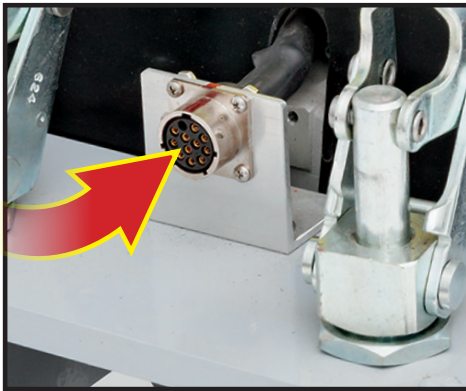
3.

Make sure the Emergency stop is pushed down and the power switch is in the OFF position.



4.

Insert the cable connector into the receiving end on the base and rotate $\frac{1}{4}$ turn clockwise.



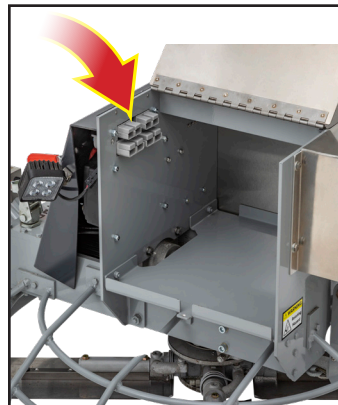
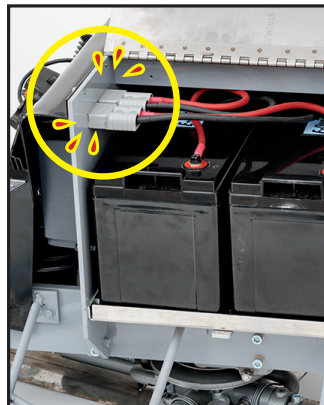
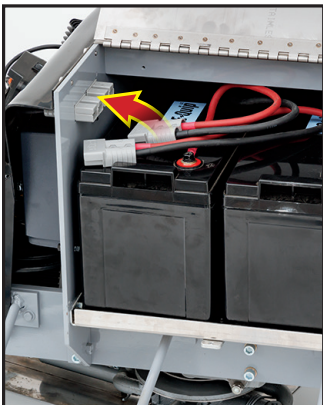
5.

Open the battery cover and place the batteries in the machine, then connect the battery cables.

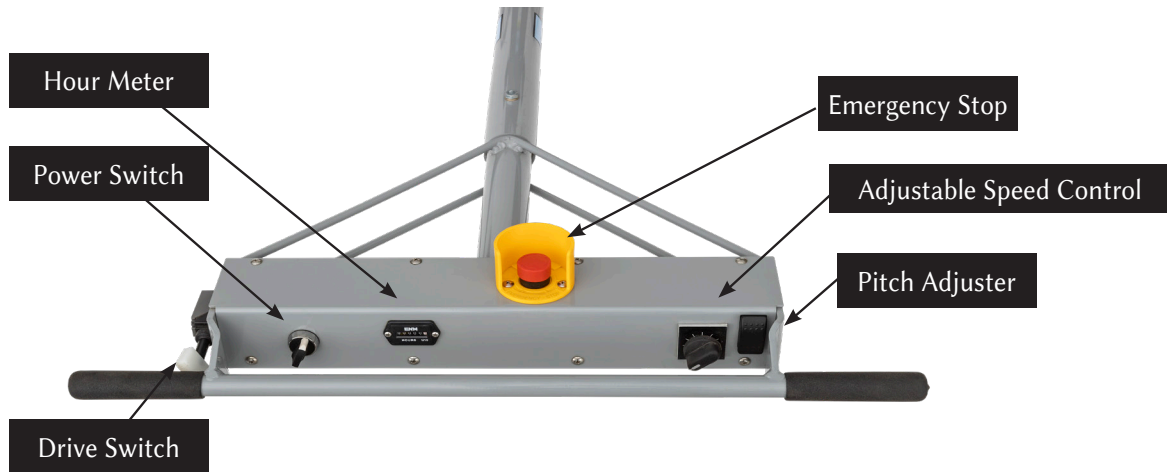
The top outlet is for 2 24v batteries and the bottom outlet is for 1 or 2 48v batteries

6.

Close the battery cover and secure with the latches.



OPERATING THE TROWELER



1. Make sure that the Emergency Stop button is in the up position.
2. Turn the machine speed to 0.
3. Turn the power switch to the ON position.
4. While firmly holding both handles, press the drive switch inward to allow the machine to energize.
5. Select the speed using the speed control.
6. Use the switch to adjust the trowel pitch. **Top=tilt Bottom=flat**
7. After each use, remove the batteries from the machine before moving it from the work area.
8. Recharge the batteries after each use.

- **Always keep the batteries right side up.**
- **Tilting, flipping, or dropping the batteries can cause permanent damage!**
- **Any time the troweler is not in operation, the EMERGENCY STOP should be pushed down and the power switch in the off position.**
- **Never allow the troweler to get wet.**

made in
the USA

TROWELER SPECS

- 48v Machine, Powered by 1 or 2 48v Batteries or 2 24v Batteries
- 155 RPM
- Trowel Machine Weight (Without Batteries): 192 Lb.
- Battery Weight: 41.5 Lb.
- Trowel Machine Height (Excluding Handle): 22.5"
- Total Width: 37"
- Handle Height (Floor To Top Of Extended Handle): 38"
- Extended Handle Length: 51"

FEATURES

- 1 year warranty
- Hour meter
- LED lights
- Quick-disconnect handle
- Variable speed
- Electric pitch adjuster
- Planetary gear system
- Standard 14" blade

Runtime

2-24v Batteries = 8 Hr.

1-48v Battery = 3 Hr

2-48v Batteries = 5.5 Hr.

SERVICE AND MAINTENANCE

Cleaning your machine after each use will contribute greatly to its longevity. Be sure to remove all dirt and debris, using only a brush or rag. Do not use a pressure washer.

Inspect the machine before and after each use for damage and unusual wear.

E-Trowel

69 Lancaster Ave.
Christiana, PA 17509
717-786-0173

SERVICE MANUAL

Table of Contents

Parts List..... 3-6

Service Procedures 7

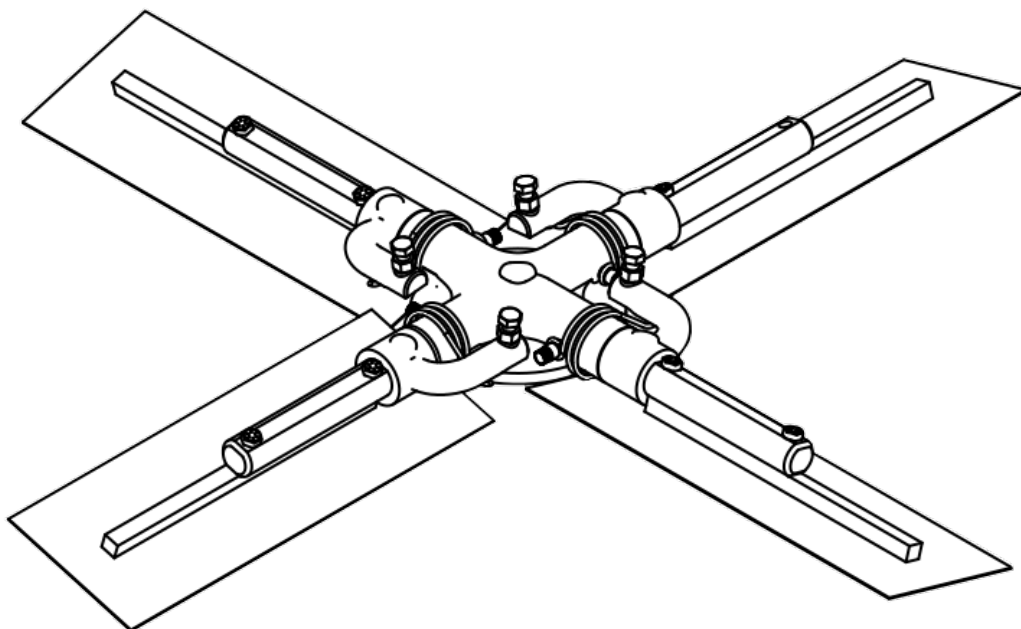
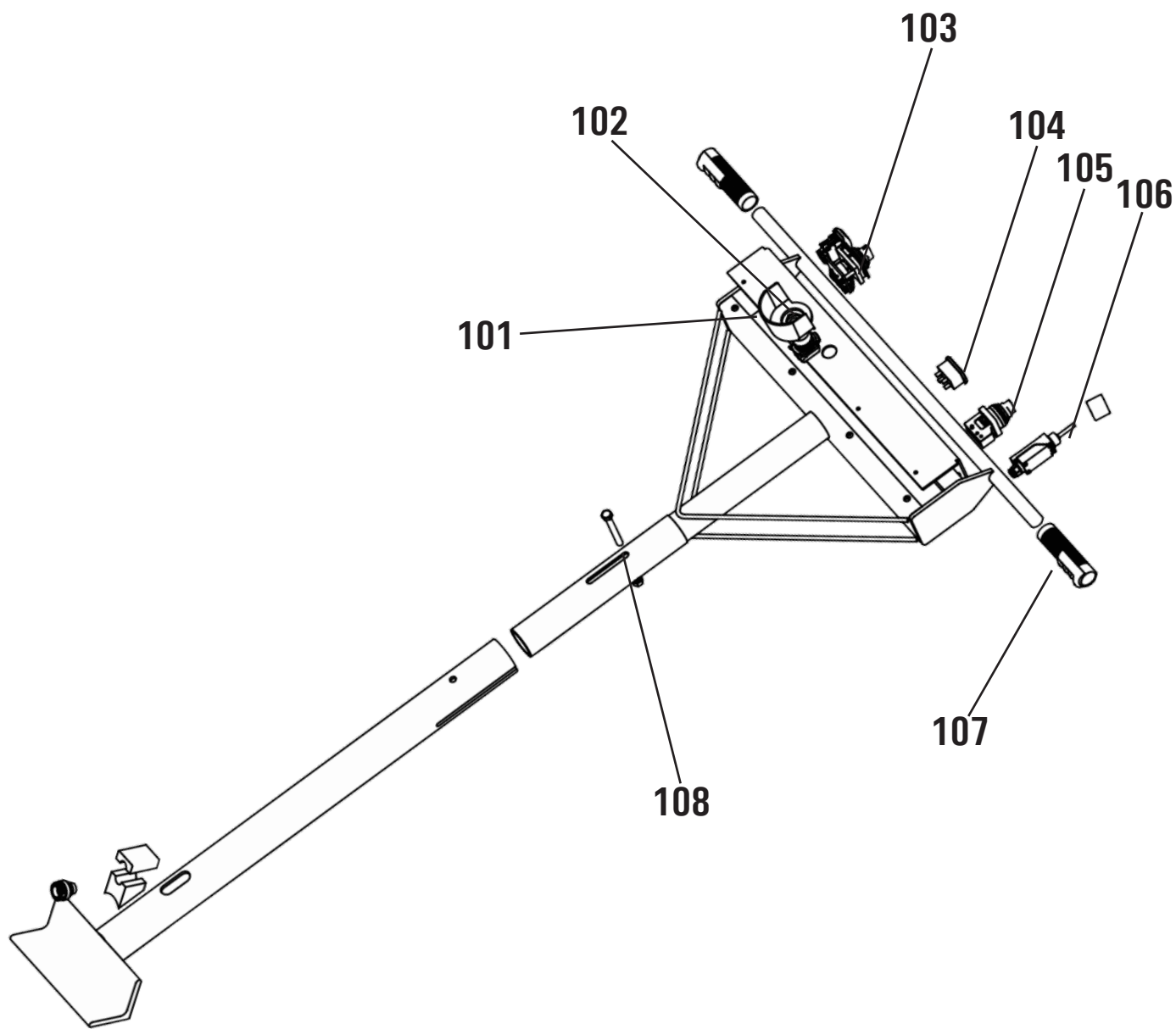
Repair Procedures 8

xxxxxxxxxxxxxx x

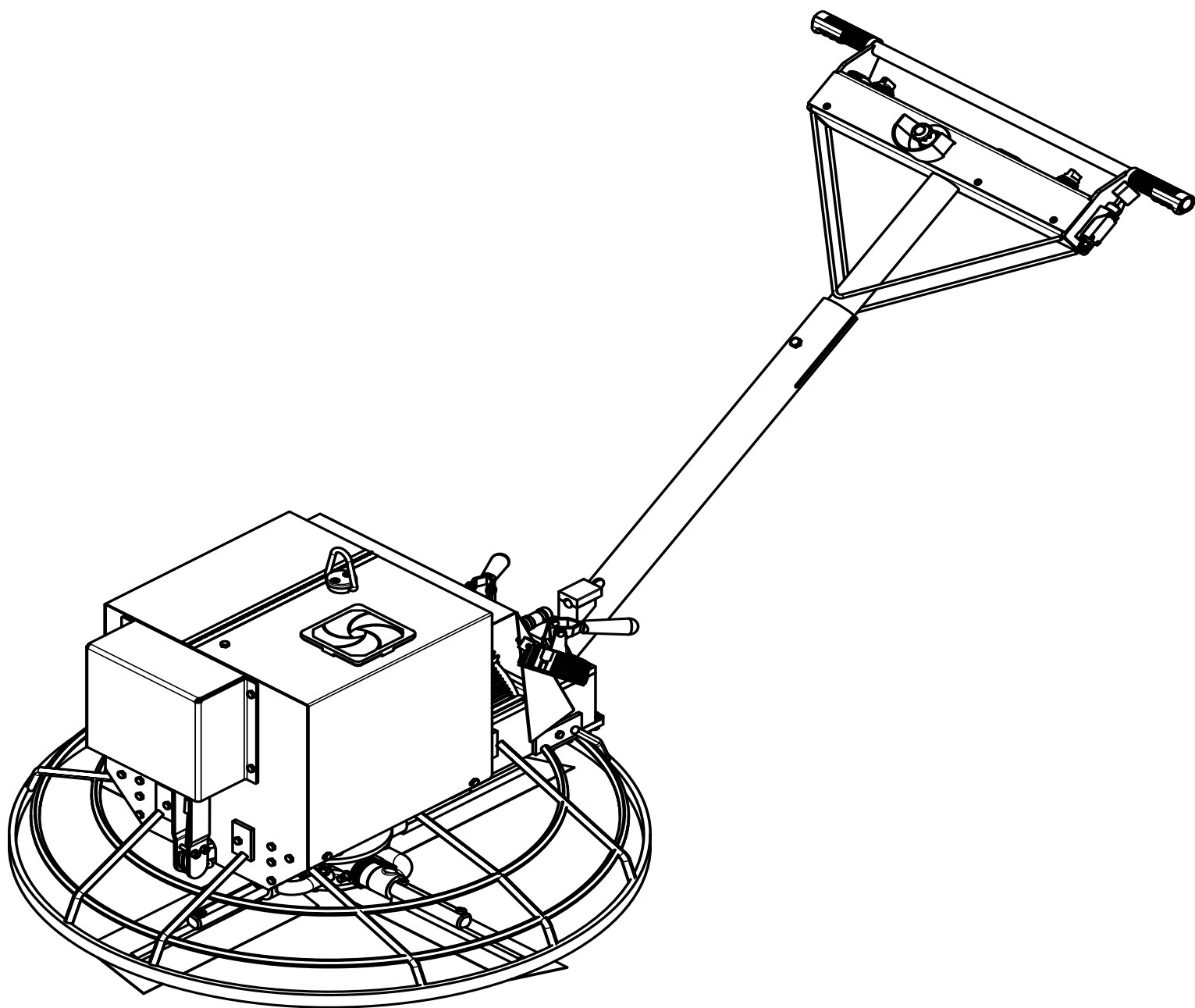
xxxxxxxxxxxxxx x

PARTS LISTS

| part # | description |
|---------------------|------------------------|
| Handle Parts | |
| 101 | On-off switch |
| 102 | E-stop |
| 103 | E-stop shield |
| 104 | Pot-speed |
| 105 | Up/down switch |
| 106 | Go switch (AEC 081961) |
| 107 | Handle grip |
| 108 | Hour meter |
| 109 | Female connector |
| Rotor Parts | |
| 300 | Rotor Assembly |



| part # | description |
|----------------------------|-------------------------------------|
| Troweler Body Parts | |
| 201 | Male connector |
| 202 | Motor sensor connector |
| 203 | 48 to 24 connector |
| 204 | Term strip |
| 205 | Fuse holder |
| 206 | 125Amp Fuse |
| 207 | Fuseholder (2 required) |
| 208 | Fuse (2 required) |
| 209 | Set of 9 Lugs for #4 Wire |
| 210 | Gray connector for battery |
| 211 | Lug (4 required) |
| 212 | Fan |
| 213 | Fan cover |
| 214 | Up/down actuator |
| 215 | Cable |
| 216 | Cable clamp |
| 217 | Eye bolt |
| 218 | Thimble |
| 219 | Hoist ring |
| 220 | Lanyard with pin |
| 221 | Cover for controls |
| 222 | Wire terminals |
| 223 | Harness Assembly, Upper controls |
| 224 | Harness Assembly, Lower controls |



SERVICE PROCEDURES

MONTHLY MAINTENANCE CHECKLIST

- Grease the zerks
- Inspect the plugs for dirt and debris, and clean if necessary
- Inspect the cooling fan for dust and debris and confirm it is in working condition
- Inspect all the switches on the handle for proper operation, and replace them at first sign of non-working functionality
- Lubricate the main shaft

Note: The gearbox is not serviceable

REPAIR PROCEDURES

switches and controls
spider assembly



AEC FACTORY & HEADQUARTERS

819 S. 5TH STREET
PARAGOULD, ARKANSAS 72450
870.236.7751
800.643.0095 (TOLL FREE (USA ONLY))

MAILING

PO BOX 819
PARAGOULD, ARKANSAS 72451

ALLENENG.COM

CONNECT WITH US ON SOCIAL

