

WALK-BEHIND TROWELS

SP446



PARTS & DECALS MANUAL

Manual Part #: 068518P | Revision: A
Language: English | Original Instructions



Walk-Behind Trowel

PARTS & DECALS MANUAL

This manual covers the Trowel Parts listed below

<u>Part No.</u>	<u>Description</u>
067750	SP446 - Walk-behind Trowel, 46", Honda GX390

Copyright © 2024 Allen Engineering Corporation
All rights reserved

All information, specifications, and illustrations in this manual are subject to change without notice and are based on the latest information at the time of publication. No part of this manual may be reproduced or transmitted in any form or by any means, electronics or mechanical, for any purpose, without the express written permission of Allen Engineering Corporation (AEC). AEC assumes no responsibility or liability for any errors or inaccuracies that may appear in this manual.

Allen Products are covered under one or more of the following patent numbers:
10,100,537B1; 9,068,301; 8,360,680B2; 7,690,864B2; 7,316,523B1; 7,114,876B1; 7,108,449B1; 6,955,404B1 6,857,815B2;
6,582,153
With other Patents Pending.

Printed in U.S.A.

Sect No.	Title	Page
	Table of Contents	3
	Factory Service Information	4
	Replacement Part Procedures.....	5
1	Parts	7
	SP446 (067750) Walk Behind Assembly	8
	Handle Assembly (070545).....	12
	Pitch Handle Assembly (066413)	14
	Spider Boss Assembly	16
	SP446X Honda Eng Service Parts, GX390.....	17
2	Decals	18
	Kit, SP446 Decals.....	19
	Revision Notes.....	20

This section contains the illustrated drawings and parts list for help in identifying and/or ordering replacement parts for your machine. Follow the instructions in the front section of this manual "Ordering Parts" when ordering replacement parts to insure prompt and accurate delivery.

 **NOTE**

All set screws have blue (LOC-TITE™) applied at the factory. If set screw is removed or loosened for any reason re-apply blue (LOC-TITE™).

 **NOTE**

All grease fittings are capped with CAP PLUG GC-5 (AEC PN 015692) to protect the fitting. If cap becomes missing or damaged replace it as soon as possible.

 **NOTE**

Anti-Seize is applied at the factory to all drive line coupling, gear box main and counter shafts and pitch control threaded rod assemblies. If these parts are disassembled re-apply a light coat of a graphite based anti-seize.

We recommend AEC quality replacement parts, available from the AEC Customer Service Department or your nearest AEC Dealer.

Part numbers are subject to change without notice. Part numbers might be different outside of the United States of America. Use part numbers listed in the applicable parts list table when you place your order. If a part number changes, the AEC Customer Service Department or your nearest AEC dealer will have the latest part number for the replacement part.

Remember when you order replacement parts, you will need your model number and serial number. These are the numbers that you have recorded in the UNIT ID section of this manual. Please order replacement parts by the appropriate part number, not the key number.

This manual contains an illustrated parts list for help in ordering replacement parts for your machine. Follow the instructions below when ordering parts to insure prompt and accurate delivery:

1. All orders for service parts - include the serial number for the machine. Shipment will be delayed if this information is not available.
2. Include correct description and part number from the "PARTS" Section 1.
3. Specify exact shipping instructions, including the preferred routing and complete destination address.
4. **DO NOT** return parts to AEC without receiving written authorization from AEC. All authorized returns must be shipped pre-paid.
5. When placing an order, please contact the AEC Dealer nearest you.

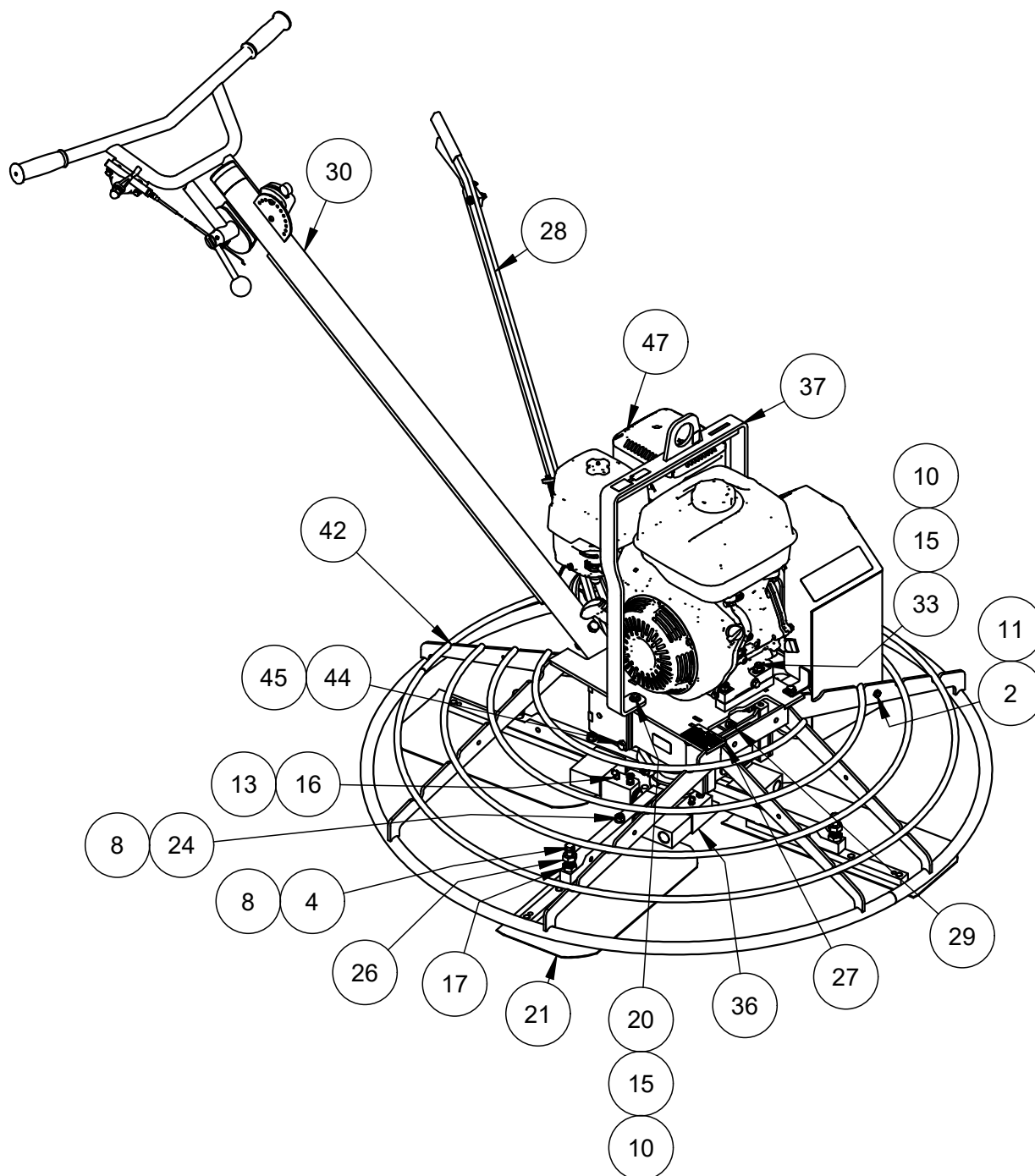


All information, specifications, and illustrations in this manual are subject to change without notice and are based on the latest information at the time of publication.

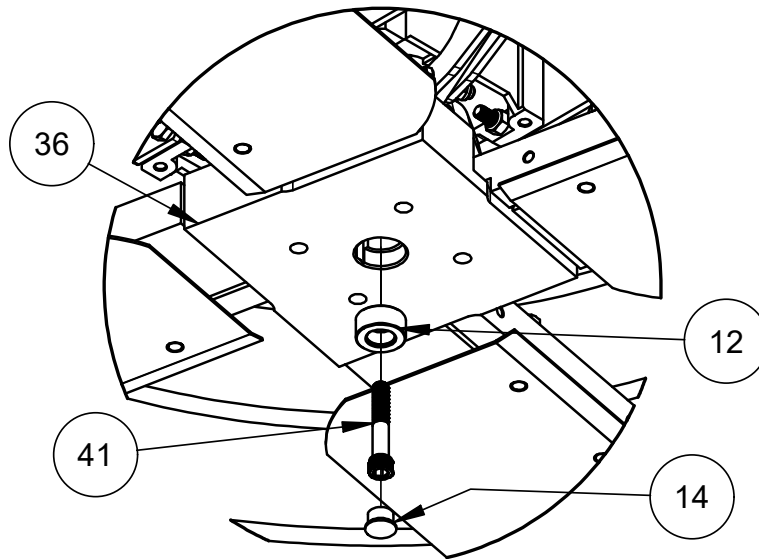
Section 1: Parts

SECTION 1 PARTS

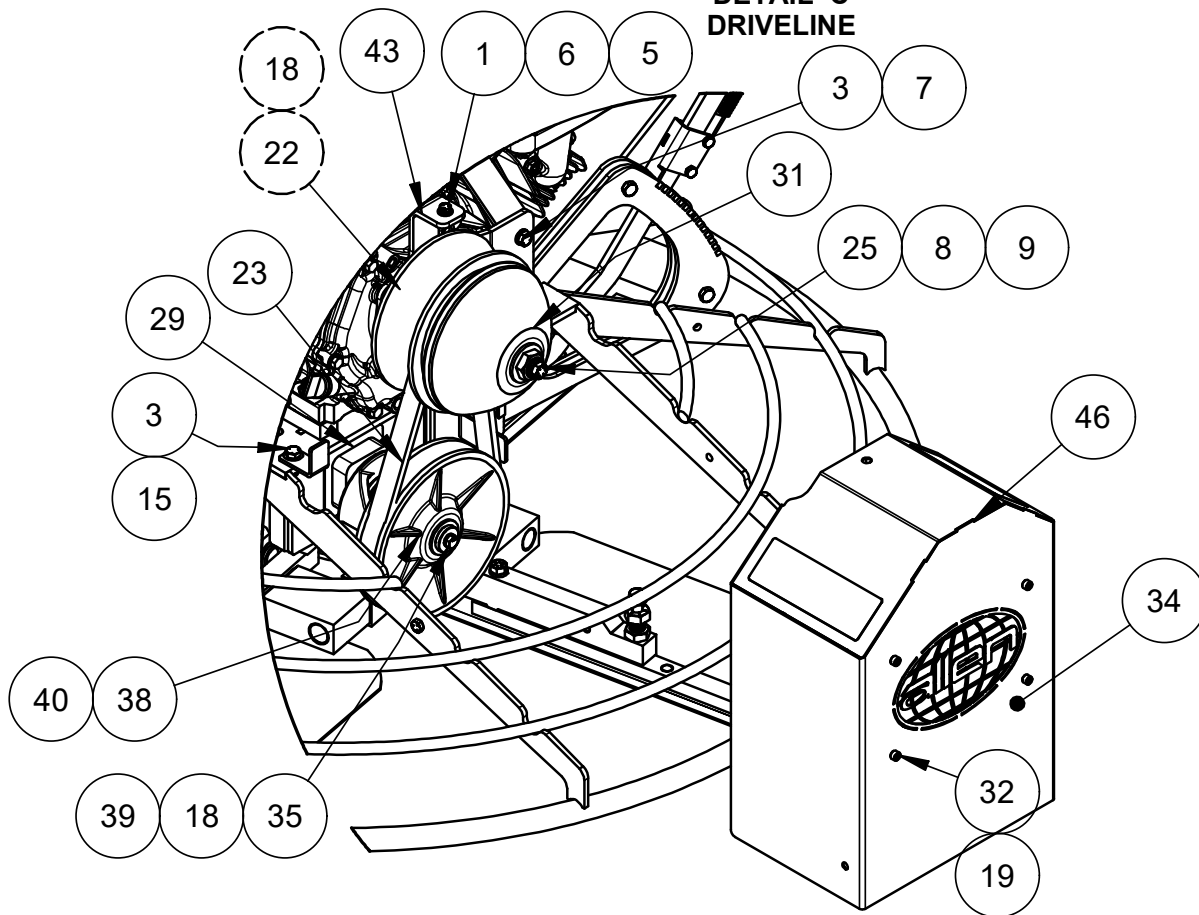
SP446 (067750) Walk Behind Assembly



DETAIL B
UNDERSIDE



DETAIL C
DRIVELINE



SECTION 1 PARTS

SP446 (067750) Walk Behind Assembly, Parts list

ITEM	PART NO.	DESCRIPTION	QTY
1	010002	FASTENER, HHCS 1/4"-20 X 3/4"	3
2	010019	FASTENER, HHCS 5/16"-18 X 3/4"	1
3	010036	FASTENER, 3/8"-16 X 1"	8
4	010059	FASTENER, HHCS 7/16"-14 X 3"	3
5	010081	FASTENER, FLAT WASHER 1/4"	1
6	010089	FASTENER, LOCK WASHER 1/4"	1
7	010091	FASTENER, LOCK WASHER 3/8"	6
8	010092	FASTENER, LOCK WASHER 7/16"	9
9	010096	FASTENER, FLAT WASHER 7/16"	1
10	010464	FASTENER, HEX NUT NYLOCK 3/8"-16	6
11	012612	FASTENER, HEX NUT NULOK 5/16"-18	1
12	015690	RETAINING WASHER	1
13	015692	GREASE CAP, RED 1/4" DIA.	4
14	015693	PLUG, PLASTIC CAP EC12	1
15	017751	FASTENER, FLAT WASHER 3/8"	7
16	018510	GREASE FITTING, 1/4"-28 NPT 45 DEG	4
17	020688	FASTENER, HEX JAM NUT 5/8"-18 RH	4
18	029032	FASTENER, LOCK WASHER 8MM	5
19	029671	FASTENER, HEX NUT NYLOCK 1/4"-20	4
20	032875	FASTENER, HHCS 3/8"-16 X 1-1/4"	3
21	033747G	TROWEL BLADE, COMBO 8/18 GOLD	4
22	048361	FASTENER, HHCS M8X1.25X22MM	4
23	055902	BELT FOR CVT	1
24	064712	FASTENER, HHCS 7/16"-14 X 2-1/4"	4
25	064834	FASTENER, HHCS 7/16-20 X 5	1
26	065507	MODIFIED FASTENER, HHCS 5/8"-18 X 2" FOR SPIDER	4
27	065965	SERIAL TAG	1
28	066413	ASSEMBLY, PITCH HANDLE	1
29	067752	GEARBOX FOR 446 WALK BEHIND	1
30	070545	ASSEMBLY, HANDLE	1
31	070549	CLUTCH, DRIVER CVT	1
32	073113	FASTENER, SHCS 1/4"-20 X 1/2"	4
33	073149	FASTENER, STD BOLT 3/8"-16 X 2-1/4"	4
34	073158	ACCENT PLATE FOR CLUTCH COVER	1
35	073162	FASTENER, HHCS M8X100MM	1

SP446 (067750) Walk Behind Assembly, Parts List Continued

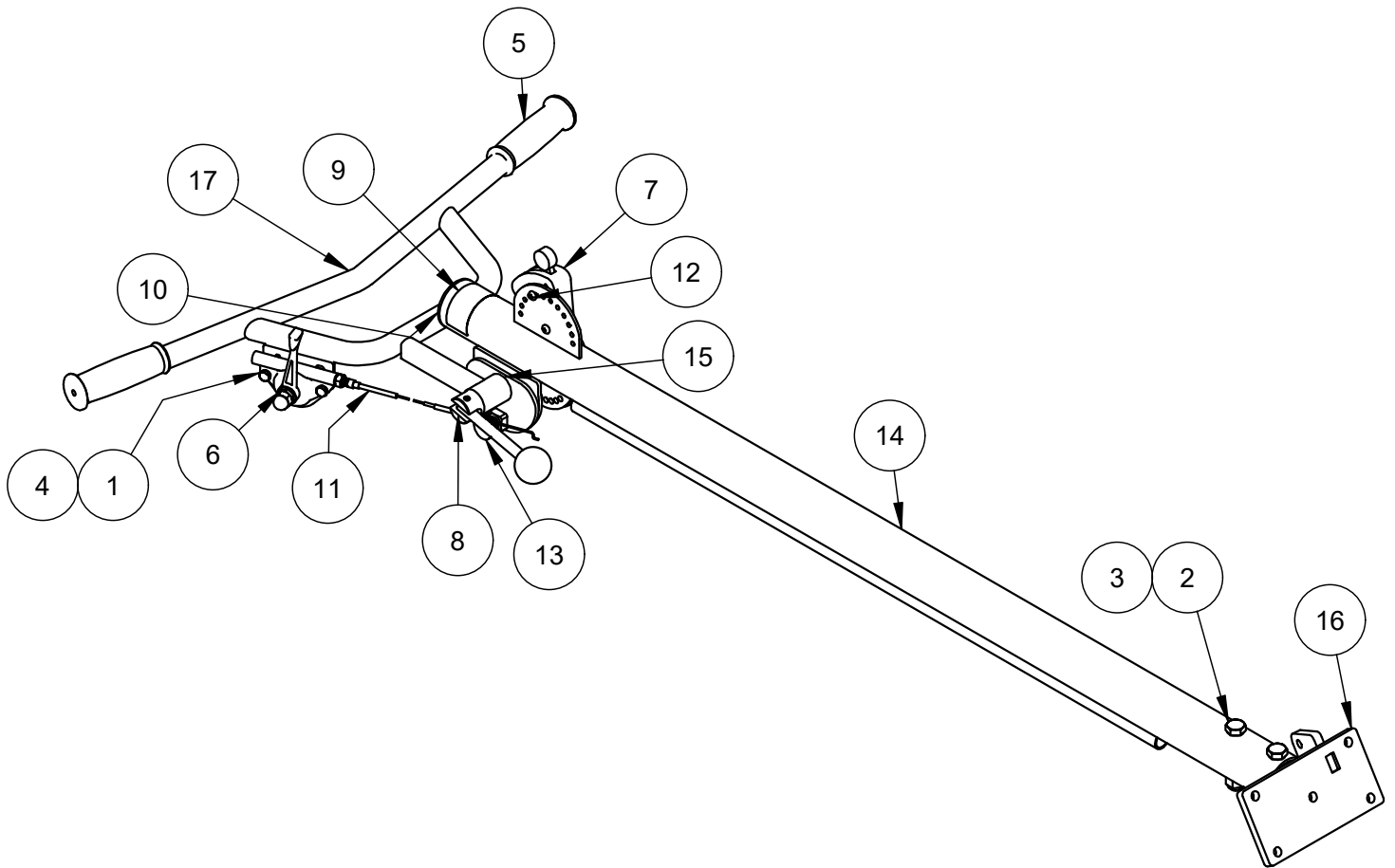
SECTION 1 PARTS

ITEM	PART NO.	DESCRIPTION	QTY
36	073163	ASSEMBLY, 446 SPIDER	1
37	073164	WELDMENT, LIFTING BALE	1
38	074340	PULLEY, DRIVEN	1
39	074955	WASHER FOR CVT	1
40	074956	CONICAL SLEEVE FOR CVT	1
41	077678	FASTENER, SSHS M12X1.75MM	1
42	077731	WELDMENT, RING	1
43	079160	PLATE, LIFT HOOK MOUNT	1
44	079194	FASTENER, HHCS M10-1.5 X 45MM	8
45	079195	FASTNER, HEX NUT NYLOK M10-1.5	1
46	079196	COVER, CLUTCH	4
47	EN0600	HONDA, GX390	1

Note: 079151 (Bar, spacer for lifting bale) [not listed] may be needed for an old design of 073164 lifting bale.

SECTION 1 PARTS

Handle Assembly (070545)



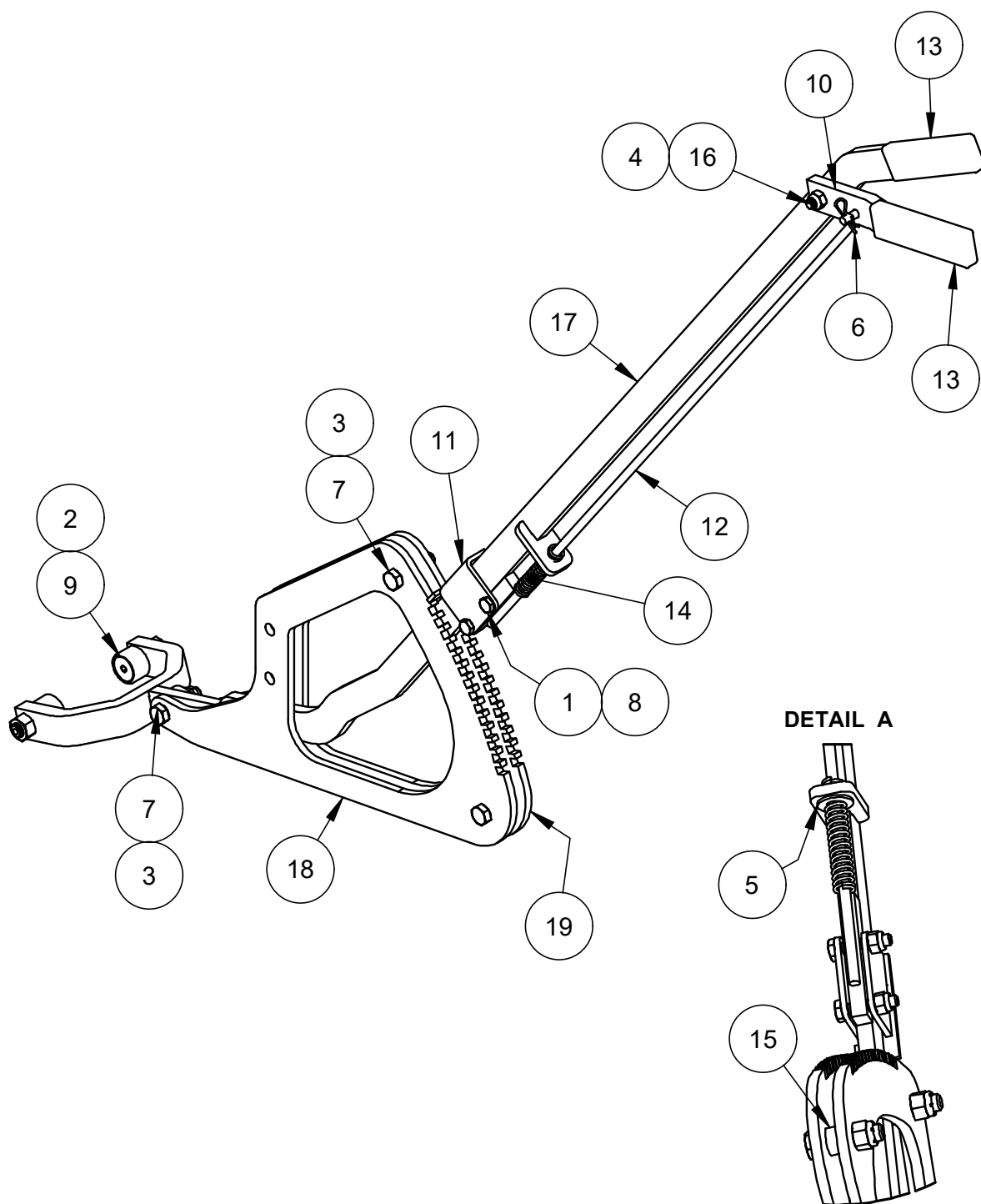
Handle Assembly (070545), Parts List

SECTION 1 PARTS

ITEM	PART NO.	DESCRIPTION	QTY
1	010003	FASTENER, HHCS 1/4"-20 X 1"	2
2	010075	FASTENER, HHCS 1/2"-13 X 3"	2
3	011238	FASTENER, HEC NUT NYLOCK 1/2"-13	2
4	029671	FASTENER, HEX NUT NYLOCK 1/4"-20	2
5	048308	HANDLE GRIP	2
6	059105	THROTTLE LEVER ASSEMBLY	1
7	065106	KILL SWITCH	1
8	066655	HANDLE ADJUSTMENT BOLT ASSEMBLY	1
9	067306	DECAL, ALLEN HANDLE	1
10	069320	TUBE PLUG, 2-1/4" OD	1
11	070118	THROTTLE CABLE ASSEMBLY	1
12	070539	FASTENER, BUTTON HEAD PHILLIPS M5X8MM	2
13	070540	FASTENER, RETRACTABLE SPRING PLUNGER	2
14	070546	EXTENSION HANDLE WELDMENT	1
15	073152	FLANGED SLEEVE BEARING	2
16	077668	HANDLE MOUNT WELDMENT	1
17	079161	HANDLE BAR WELDMENT	1

SECTION 1 PARTS

Pitch Handle Assembly (066413)



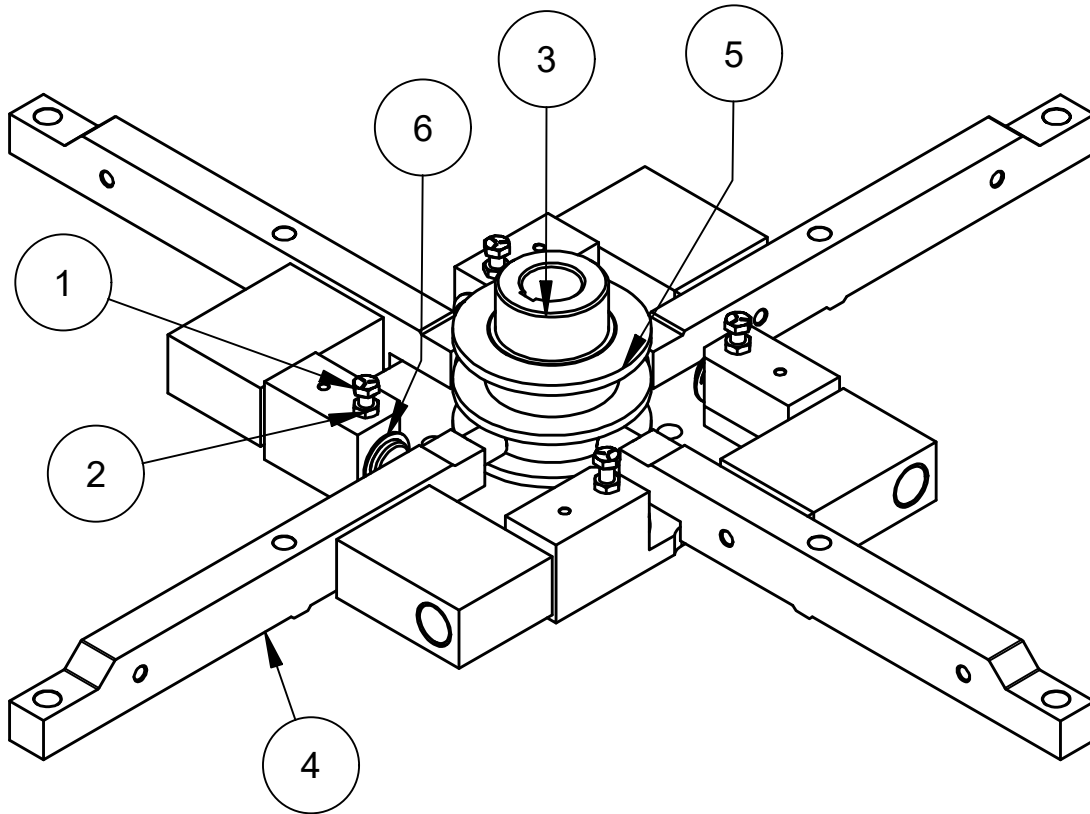
Pitch Handle Assembly (066413) Parts List

SECTION 1 PARTS

ITEM	PART NO.	DESCRIPTION	QTY
1	010004	FASTENER, HHCS 1/4"-20 X 1-1/4"	2
2	010104	FASTENER, HEX NUT 7/16"-14	2
3	010464	FASTENER, HEX NUT NYLOCK 3/8"-16	3
4	012612	FASTENER, HEX NUT NYLOCK 5/16"-18	1
5	017751	FASTENER, FLAT WASHER 3/8"	1
6	022668	HAIRPIN, 0.080 X 1-3/16	1
7	028402	FASTENER, HHCS 3/8"-16 X 1-1/2"	3
8	029671	FASTENER, HEX NUT NYLOCK 1/4"-20	2
9	066363	BEARING, TRACK ROLLER	2
10	066405	RELEASE LEVER	1
11	066408	WELDMENT, LATCH	1
12	066411	WELDMENT, LATCH ENGAGEMENT ROD	1
13	069756	HANDLE GRIP	2
14	070124	COMPRESSION SPRING, 2-3/4"	1
15	070459	SPACER, FOR PITCH HANDLE	2
16	073160	FASTENER, SHLDR 3/8" X 3/4"	1
17	077664	WELDMENT, PITCH HANDLE	1
18	077665	PLATE, PITCH CONTROL	1
19	077676	WELDMENT, INDEX PLATE	1

SECTION 1 PARTS

Spider Boss Assembly



ITEM	PART NO.	DESCRIPTION	QTY
-	073163	ASSEMBLY, SP446 SPIDER	1
1	010021	FASTENER, HHCS 5/16"-18 X 1-1/4"	4
2	065508	FASTENER, HEX JAM NUT 5/16"-18	4
3	072868	SPIDER BOSS, SP446	1
4	073314	TROWEL ARM, SP446	4
5	078067	ASSEMBLY, COLLAR WITH BRONZE SLEEVE	1
6	079177	SNAP RING, F/ 7/8" SHAFT	4



Engine, GX390
AEC PN: EN0600



Engine Oil 10W30 (1 QT)
AEC PN: 081250



Spark Plug
AEC PN: 081288



Ignition Coil
AEC PN: 081284



Element for Air Cleaner
AEC PN: 066440



Gasket for Air Cleaner
AEC PN: 081268



Starter Recoil (Red)
AEC PN: 081277



Starter Recoil (BLK)
AEC PN: 081278



Nut A/C Cover
AEC PN: 081287



Carburetor BECOA A
AEC PN: 081257



Carburetor BE88A A
AEC PN: 081256

NOTE: Images for reference only

Section 2: Decals

Kit, SP446 Decals

SECTION 2 DECALS



ITEM	PART NO.	DESCRIPTION	QTY
-	070236	KIT, DECAL SP446	1
1	067303	AEC INFO/WARRANTY	1
2	067306	ALLEN HANDLE DECAL	1
3	067309	ENGINE WARNING	1
4	067322	LIFT HOOK	1
5	067323	GEARBOX OIL/SPIDER GREASE	1
6	069225	PROPOSITION 65	1
7	070237	SP446 DECAL (NOTE SHOWN)	1
8	070587	DRIVEN CLUTCH REMOVAL TOOL	1
9	075196	QR CODE (NOT SHOWN)	1
10	075756	MADE IN AMERICA (NOT SHOWN)	1

**GENERAL
INFORMATION****Revision Notes****MANUAL REVISION DETAIL**

REVISION #	REVISION DATE	REVISION REFERENCE #	REVISION BY
-	6/24	Initial Release	MK
A	7/25	25-242, Added Honda Eng service parts, GX390	MK



AEC FACTORY & HEADQUARTERS

819 S. 5TH STREET
PARAGOULD, ARKANSAS 72450
870.236.7751
800.643.0095 (TOLL FREE (USA ONLY))

MAILING

PO BOX 819
PARAGOULD, ARKANSAS 72451

ALLENENG.COM

CONNECT WITH US ON SOCIAL

