

CONCRETE VIBRATORS

POWER VIBE



SAFETY & OPERATIONS MANUAL

Power Vibe Power Unit Part #: 048776

Manual Part #: - | Revision: -

Language: English | Original Instructions



Power Vibe Series

MANUAL



Table of Contents

i.....	COVER
1.....	TABLE OF CONTENTS
2.....	COMPANY INFORMATION
3-4.....	SAFETY RULES
5.....	OPERATION
6.....	TOOL USE AND CARE
6.....	SERVICE
6.....	MAINTENANCE
6.....	CLEANING
7.....	HM300CH - HUMMER POWER UNIT ASSEMBLY & PARTS LIST
8.....	HM300 - THROTTLE GRIP ASSEMBLY & PARTS LIST
9.....	HM41H - HUMMER FISHING POLE POWER UNIT ASSEMBLY & PARTS LIST
10.....	HM400 - FISHING POLE THROTTLE GRIP ASSEMBLY & PARTS LIST
11.....	HM100 – 1" X 12" VIBRATOR ASSEMBLY & PARTS LIST
11.....	MV800 – 2" X 8" VIBRATOR ASSEMBLY & PARTS LIST
12.....	MV200 – 2" X 4" VIBRATOR ASSEMBLY & PARTS LIST
12.....	CORE & CASING PART NUMBERS FOR 1" AND 2" VIBRATOR HEADS

GENERAL SAFETY RULES

WARNING! Read and Fully understand all instructions. Failure to follow all instructions listed below, may result in fire and/or serious personal injury.

SAVE THESE INSTRUCTIONS

WORK AREA

Do not operate power tools in explosive atmospheres, such as in the presence of flammable liquids, gases, or dust. Power tools create sparks which may ignite the dust or fumes.

Keep bystanders, children, and visitors away while operating a power tool. Distractions can cause you to lose control.

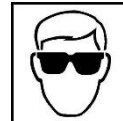


PERSONAL SAFETY

Stay alert, watch what you are doing, and use common sense when operating a power tool. Do not use tool while tired or under the influence of drugs, alcohol, or medication. A moment of inattention while operating power tools may result in serious personal injury.



DRESS PROPERLY



Do not wear loose clothing or jewelry. Contain long hair. Keep your hair, clothing, and gloves away from moving parts. Loose clothes, jewelry, or long hair can be caught in moving parts.

Do not overreach. Keep proper footing and balance at all times. Proper footing and balance enable better control of the tool in unexpected situations.

Use safety equipment. Always wear eye protection. Dust mask. Non-skid safety shoes, hard hat, or hearing protection must be used for appropriate conditions.

Do not point the tool at co-workers or yourself at any time. No horseplay! Work Safe! Respect the tool as a working implement.



SPECIFIC SAFETY RULES

- Always keep your hands and face away from vibrating head when operating.
- Keep hands away from moving parts.
- Ensure your hands are not wet when using the corded or cordless vibrator.
- Use both hands for safe handling of this tool. This tool should not be used while standing on a ladder.
- This tool is intended only for vibrating concrete. Any other use of the product may cause serious personal injury.
- Do not use tool in a concrete mixer. Serious personal injury may result.
- Do not alter or modify the tool in any way.
- Switch off the tool immediately if you notice abnormal noise or something faulty during operation.
- Inspect the tool carefully for breakage, cracks or deformation before each operation or if you accidentally drop the tool or strike the tool against something.
- Be careful not to allow water, wet concrete or the like to get into the engine compartment.
- Do not let the tool fall into wet concrete.
- Insert the vibrating head carefully between iron/steel frames.
- When using with reinforcing rods, use a rubber coated vibrating head.
- Do not crush, twist, or overly bend the flexible hose.
- Use a wet cloth or the like to carefully wipe off any wet concrete left on the tool after use.
- Extra care should be given to thorough cleaning of the engine components.
- Do not operate this tool for long periods of time. Vibration caused by the operating action of this tool may cause permanent injury to fingers, hands, and arms. Use gloves to provide extra cushion, take frequent rest periods, and limit daily time of use.



NOTE:

Vibrating too long in a single place can cause concrete segregation.

When the coarse aggregate segregates when placing concrete, shovel out the coarse aggregate and put it where there is plenty of mortar. Then use the tool on it. Don't leave coarse aggregate in the segregated condition.

When concreting a sloped site, always pour from the bottom at the beginning. This way the weight of the freshly poured concrete and vibration will lead to effective removal of air bubbles. Conversely, if the pouring is done first from above, the mortar will separate and eventually slide to the bottom.

TO OPERATE

Using both hands, as shown in Figures 4a & 4b firmly holding the throttle control and either the included lift handle or core casing while inserting the vibrating head into the poured concrete.

For best results, it is usually best to keep the vibrator head vertical at all times and to avoid side-to-side movement.

It is generally best to insert the vibrator head into and remove the vibrator head from the concrete when engine is at idle.

EFFECTIVE LEVELING AND REMOVAL OF AIR BUBBLES

Removal of the air bubble is complete after you have worked the tool throughout each effective range, the concrete stops shrinking, and the mortar has risen evenly to the surface, giving off a light appearance. Gently remove the operating tool not to leave holes.



4a



4b

TOOL USE AND CARE

Store idle tools out of reach of children and other untrained persons. Tools are dangerous in the hands of untrained users.

Maintain tools with care. Keep cutting tools sharp and clean.

Check for misalignment or binding of moving parts, breakage of parts, and any other condition that may affect the tool's operation. If damaged, have the tools serviced before using. Many accidents are caused by poorly maintained tools.

Do not force tool. Use the correct tool for your application. The correct tool will do the job better and safer at the rate for which it is designed.

SERVICE

Tool service must be performed only by qualified repair personnel. Service or maintenance performed by unqualified personnel may result in a risk of injury and void warranty.

When servicing a tool, use only identical replacements parts. Use of unauthorized parts may create a risk of shock or injury and void warranty.

MAINTENANCE

The core casing is properly lubricated at the factory. It is recommended for every 50-100 hours of use, the core be removed and wiped with a clean, dry cloth and **EP2- LITHIUM GREASE** be applied.

DO NOT disassemble vibrator head. The vibrator head is sealed at the factory and contains a special no maintenance assembly. Breaking the seal and adding lubricant will significantly decrease the performance and life of the tools. If the vibrator head is damaged and your warranty is still active, call your authorized dealer for a replacement.

CLEANING

Never use solvents or other harsh chemicals for cleaning the non-metallic parts of the tool. These chemicals may weaken the plastic materials used in these parts.

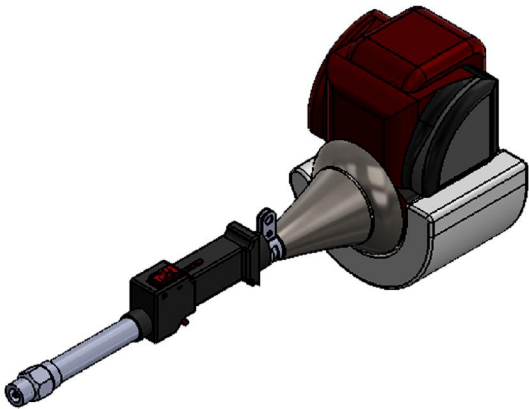
Use a cloth dampened only with water. For best results, clean the vibrator head and core casing while the concrete is still wet.

Blow or vacuum dirt and dust out of all crevices in and around the engine unit at least once a week.

Never let any liquid or wet concrete get inside the engine unit.

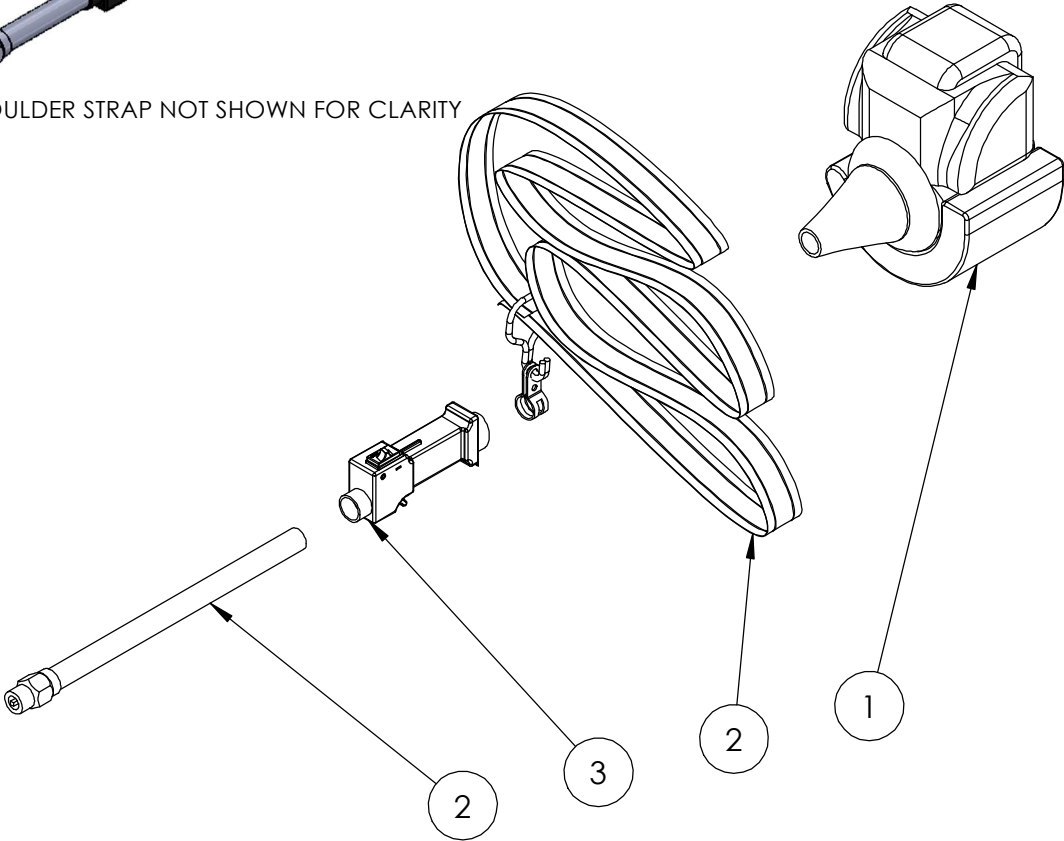
Never immerse the engine unit into concrete or any liquid.

048776 - HUMMER POWER UNIT W/HONDA ENGINE



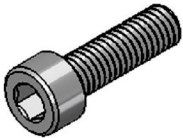
SHOULDER STRAP NOT SHOWN FOR CLARITY

7



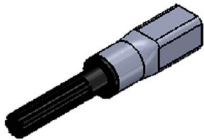
ITEM NO.	PART NUMBER	DESCRIPTION	MATERIAL	QTY.
1	MV65H	HONDA ENGINE-GX35		1
2	049183	SHAFT AND STRAP ASSEMBLY		1
3	MV61	HONDA THROTTLE CONTROL		1
4	MV80	ITEMS NOT FURNISHED BY HONDA		1

MV80 - ITEMS NOT
FURNISHED BY HONDA



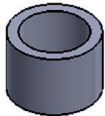
FC20 -
1.0 X 20 M6 SHCS
QTY: 4

MV63 -
SHIM STOCK
QTY: 1



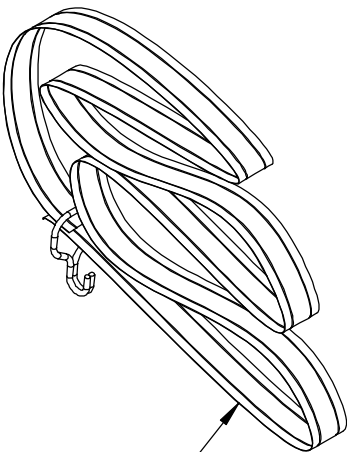
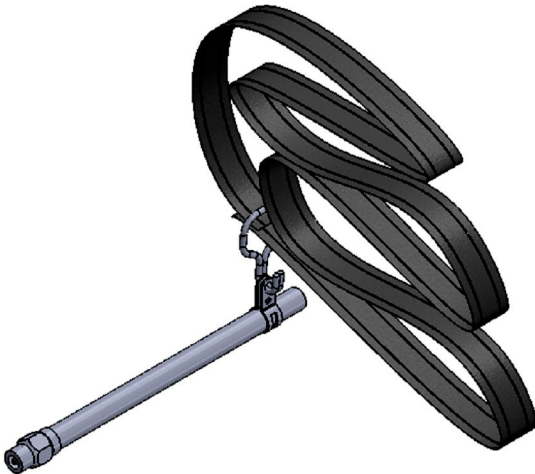
MV64 - SPLINE TO
CABLE ADAPTOR
QTY: 1

MV73 -
1" TUBE SPACER
QTY: 1

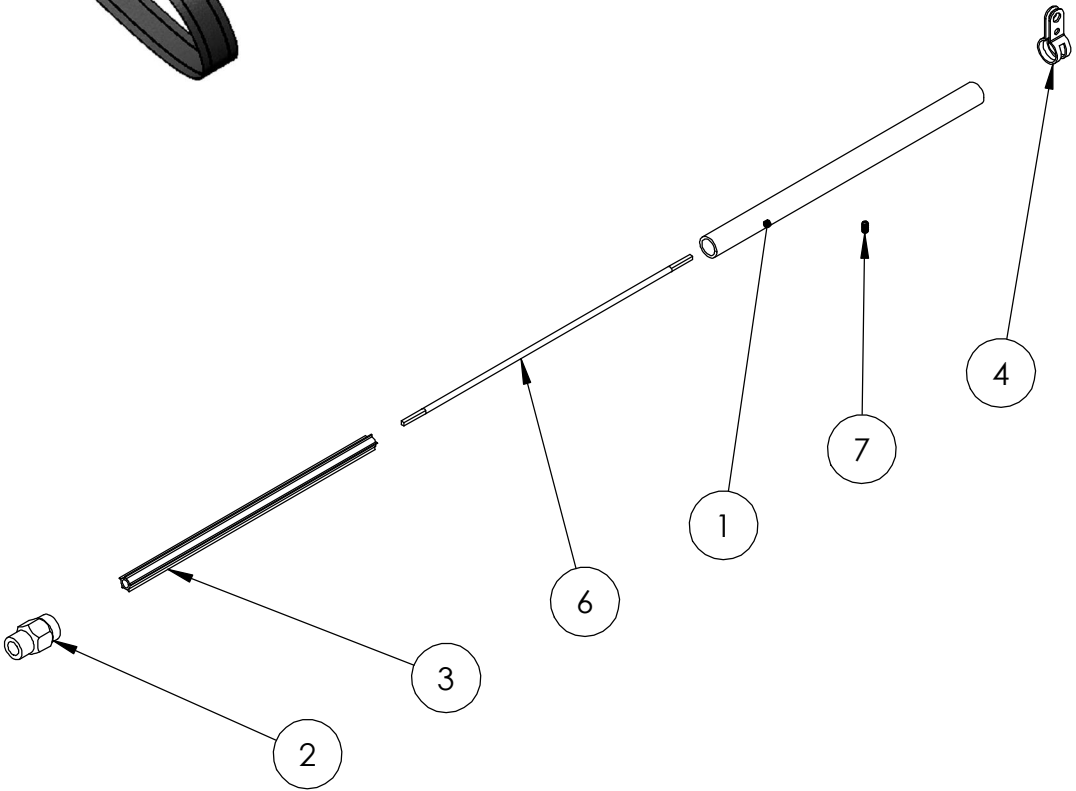


MV76 -
0.8 X 10 M5 SHCS
QTY: 1

HM300 - THROTTLE GRIP ASSEMBLY

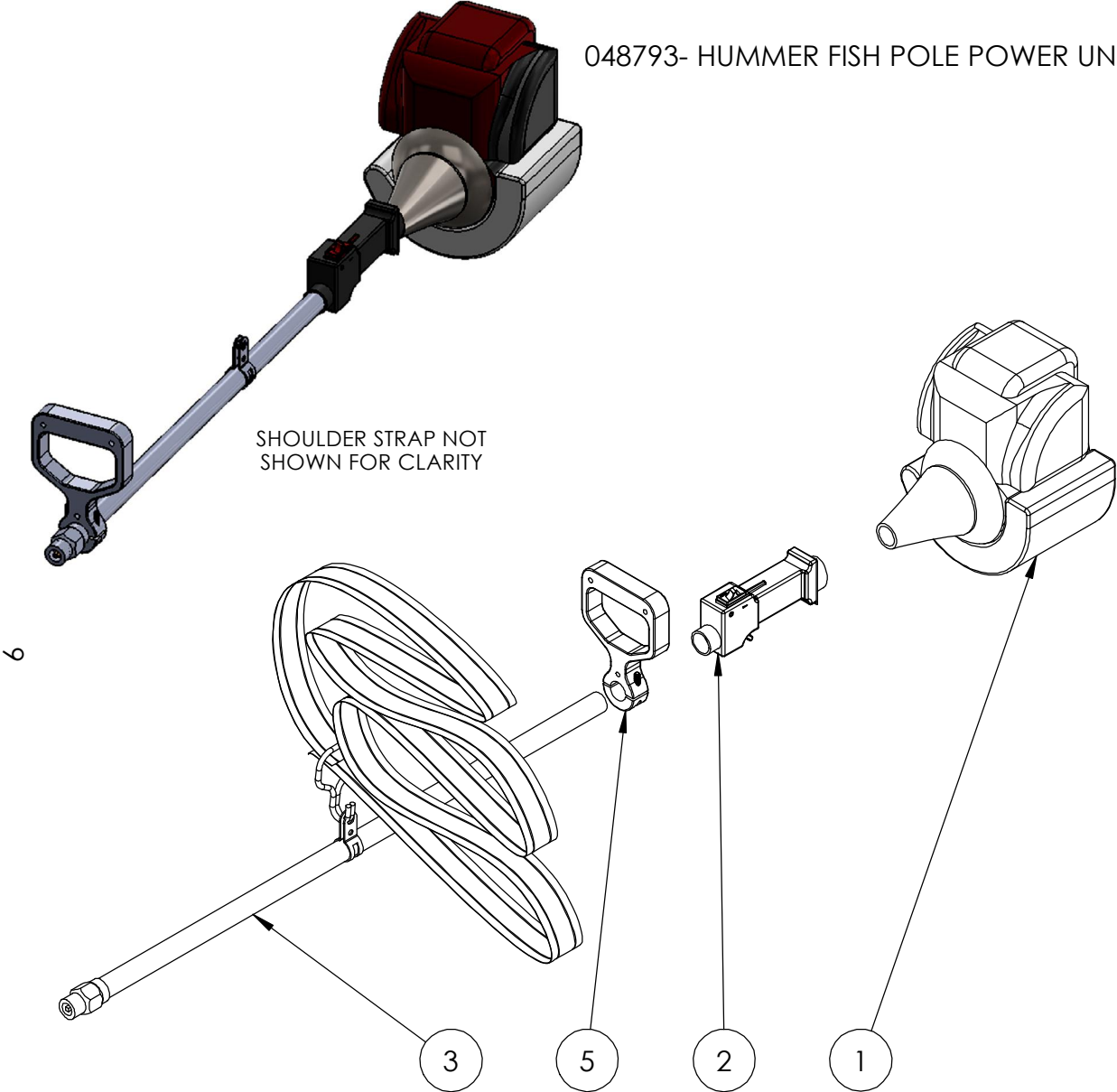


8



ITEM NO.	PART NUMBER	DESCRIPTION	MATERIAL	QTY.
1	HM307	1" X 15.75" ALUM TUBING		1
2	HM308	1" MALE FITTING		1
3	HM302	14.5"STAR LINER		1
4	HM304-1	SHOULDER STRAP ADAPTER		1
5	049183	SHOULDER STRAP		1
6	HM303	17" DRIVE CABLE		1
7	MV308	1/4-20 x .5 SET SCREW		1

048793- HUMMER FISH POLE POWER UNIT

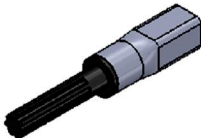


MV80 - ITEMS NOT
FURNISHED BY HONDA



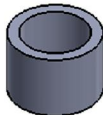
FC20 -
1.0 X 20 M6 SHCS
QTY: 4

MV63 -
SHIM STOCK
QTY: 1



MV64 - SPLINE TO
CABLE ADAPTOR
QTY: 1

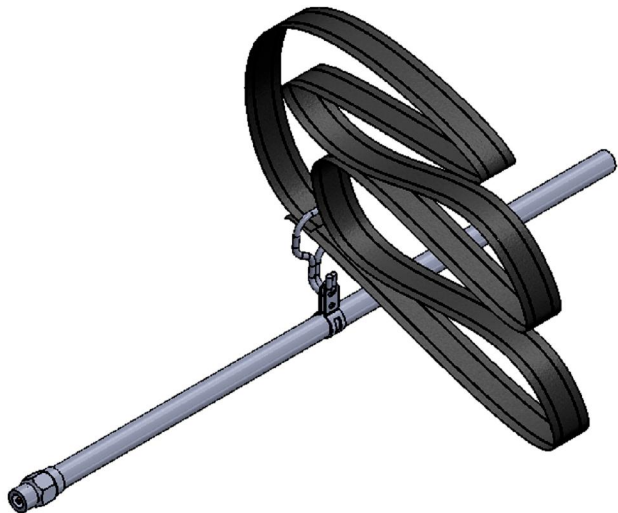
MV73 -
1" TUBE SPACER
QTY: 1



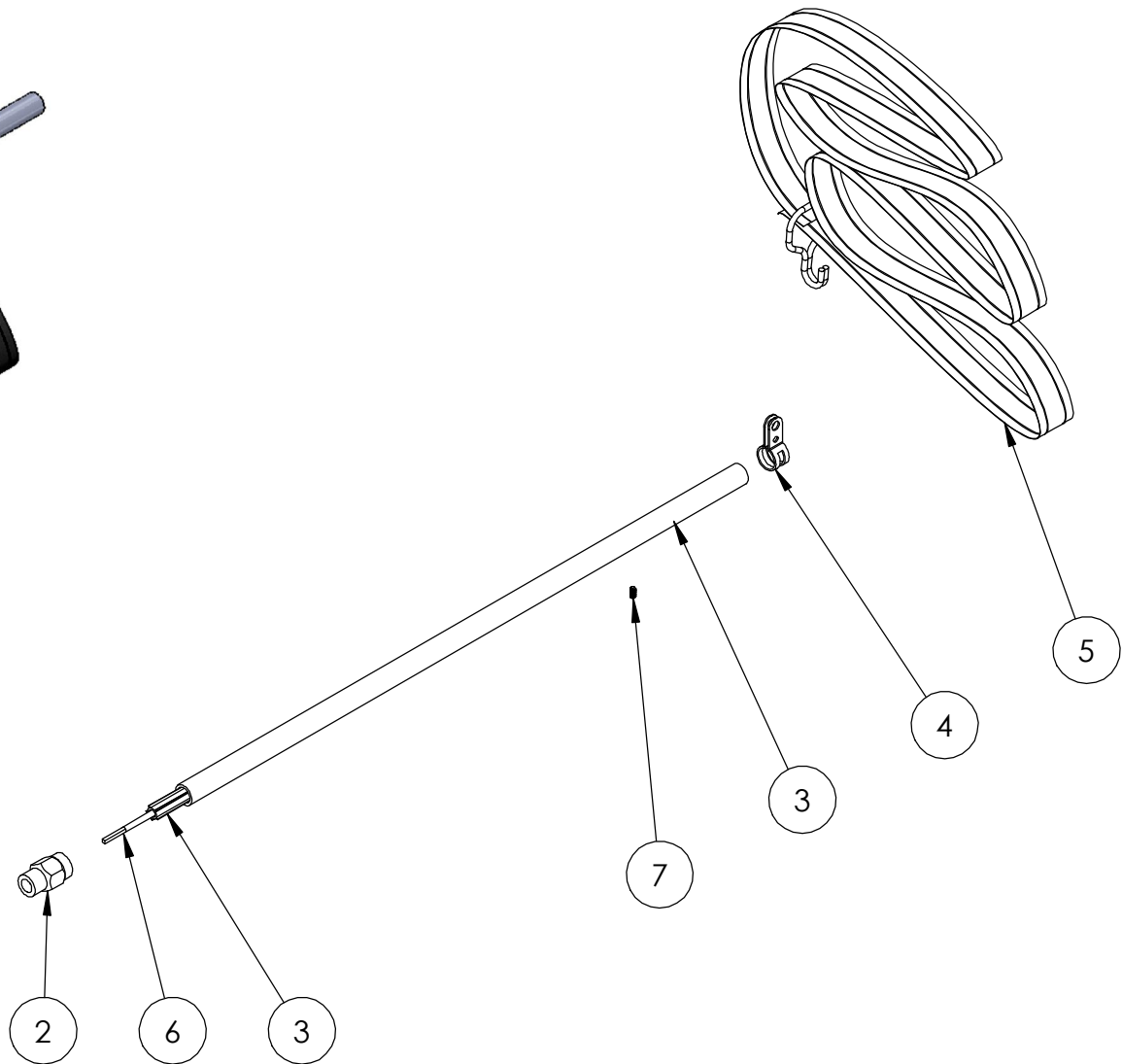
MV76 -
0.8 X 10 M5 SHCS
QTY: 1

ITEM NO.	PART NUMBER	DESCRIPTION	MATERIAL	QTY.
1	MV65H	HONDA ENGINE-GX35		1
2	049182	HONDA THROTTLE CONTROL		1
3	HM400	SHAFT AND STRAP ASSEMBLY		1
4	MV80	ITEMS NOT FURNISHED BY HONDA		1
5	066982	LIFT HANDLE		1

HM400 - FISH POLE THROTTLE GRIP ASSEMBLY

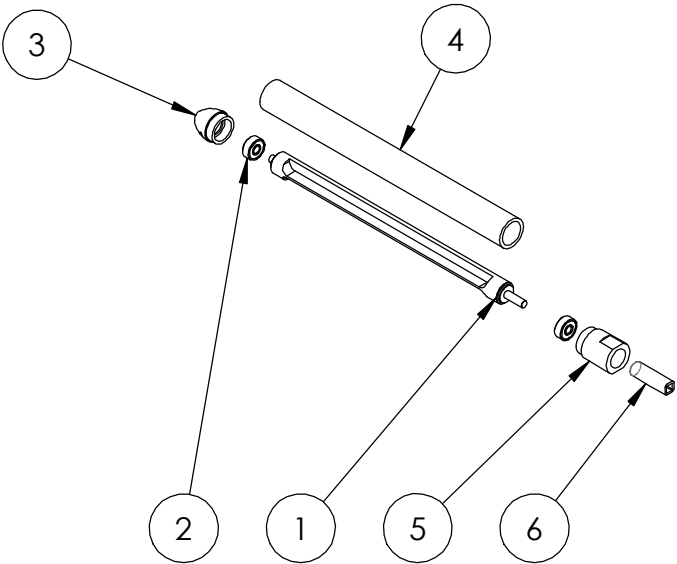


10



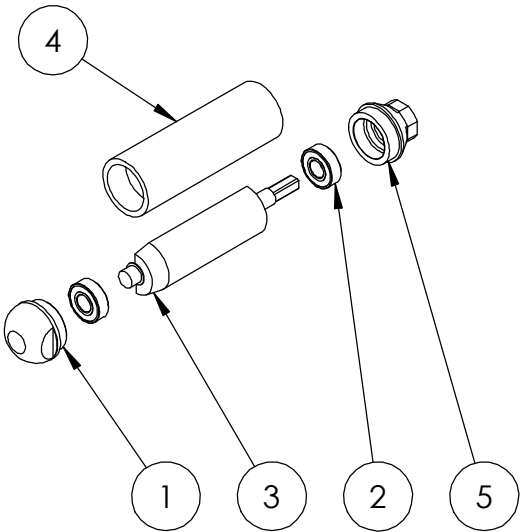
ITEM NO.	PART NUMBER	DESCRIPTION	MATERIAL	QTY.
1	HM450	1" X 33.75" ALUM TUBING		1
2	HM308	1" MALE FITTING		1
3	HM452	31-1/2"STAR LINER		1
4	HM304-1	SHOULDER STRAP ADAPTER		1
5	HM301	SHOULDER STRAP		1
6	HM451	35" DRIVE CABLE		1
7	MV308	1/4-20 x .5 SET SCREW		1

HM100 -1"X12" VIBRATOR ASSEMBLY & PARTS LIST



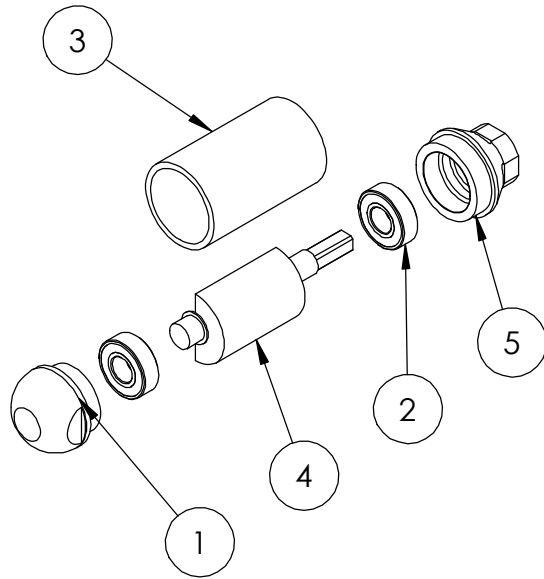
ITEM NO.	PART NUMBER	DESCRIPTION	MATERIAL	QTY.
1	HM140	ECCENTRIC WEIGHT - 1X12 VIBRATOR		1
2	HM120	BEARING - 1X12 VIBRATOR		2
3	HM110	NOSE CAP - 1X12 VIBRATOR		1
4	HM130	SHELL - 1X12 VIBRATOR		1
5	HM150	THREADED CAP - 1X12 VIBRATOR		1
6	HM180	FEMALE CABLE ADAPTOR - 1X12 VIBRATOR		1

MV800 - 2"X8" VIBRATOR ASSEMBLY & PARTS LIST



ITEM NO.	PART NUMBER	DESCRIPTION	MATERIAL	QTY.
1	MV210	NOSE CAP - 2X8 VIBRATOR		1
2	MV220	BEARING 2X12		2
3	MV270	ECCENTRIC WEIGHT - 2X8 VIBRATOR		1
4	MV260	SHELL - 2X8 VIBRATOR		1
5	MV250	THREADED CAP 2X12 VIBRATOR		1

MV200 - 2X4 VIBRATOR ASSEMBLY AND PARTS LIST



ITEM NO.	PART NUMBER	DESCRIPTION	MATERIAL	QTY.
1	MV210	NOSE CAP - 2X4 VIBRATOR		1
2	MV220	BEARING 2X12		2
3	MV230	SHELL - 2X4 VIBRATOR		1
4	MV240	ECCENTRIC WEIGHT - 2X4 VIBRATOR		1
5	MV250	THREADED CAP 2X12 VIBRATOR		1

12



Power Vibe Series Power Unit (Gasoline Powered):

Part #	Model	Description
048776	PV35HPU	Vibrator, PV Power Unit, PV 35cc Honda GX35 4-cycle engine

Power Vibe Series Vibrator Shafts: (used for 1" + Vibrator Heads)

Part #	Model	Description
048783	PVS100-2	Vibrator, PV Flexible shaft 2' (.6m)
048784	PVS100-3.5	Vibrator, PV Flexible shaft 3.5' (1.06m)
048785	PVS100-4	Vibrator, PV Flexible shaft 4' (1.21m)
048786	PVS100-6	Vibrator, PV Flexible shaft 6' (1.82m)
048787	PVS100-8	Vibrator, PV Flexible shaft 8' (2.43m)
048788	PVS100-10	Vibrator, PV Flexible shaft 10' (3.04m)

Power Vibe Series Vibrator Shafts: (used for 1 3/4" + Vibrator Heads)

Part #	Model	Description
048794	PVPS175-2	Vibrator, PV Flexible Shaft 2' (.6m)
048778	PVS175-3.5	Vibrator, PV Flexible Shaft 3.5' (1.06m)
048779	PVS175-4	Vibrator, PV Flexible Shaft 4' (1.21m)
048780	PVS175-6	Vibrator, PV Flexible Shaft 6' (1.82m)
048781	PVS175-8	Vibrator, PV Flexible Shaft 8' (2.43m)
048782	PVS175-10	Vibrator, PV Flexible Shaft 10' (3.04m)

Power Vibe Series Vibrator Heads: 1" to 2" Diameter - Steel & Rubber Covered

Part #	Model	Description
048789	PVH100-12	Vibrator, Head, Steel, PV - 1" x 12" (25.4mm x 30.5cm)
048790	PVH175-12	Vibrator, Head, Steel, PV - 1 1/4" x 12" (44.5mm x 30.5cm)
048791	PVH200-8	Vibrator, Head, Steel, PV - 2" x 8" (51mm x 20.5cm)
048792	PVPH200-12	Vibrator, Head, Steel, PV - 2" x 12" (51mm x 30.5cm)
051252	PVPRH200-8	Vibrator, Head, Rubber, PV - 2" x 8" (51mm x 20.5cm)

Power Vibe Pro Series (Gasoline): Same engine as Power Vibe Series with longer rigid shaft and lift handle.

Part #	Model	Description
069944	PVP35	Vibrator, Power Vibe Pro, 35cc 4-Cycle Honda GX35, Flexible Shaft 2' (.6m), Steel Head - 1 1/4" x 12" (44.5mm x 30.5cm)
048793	PVP35HPU	Vibrator, Power Unit, PVP, 35cc 4-Cycle Honda GX35



AEC FACTORY & HEADQUARTERS

819 S. 5TH STREET
PARAGOULD, ARKANSAS 72450
870.236.7751
800.643.0095 (TOLL FREE (USA ONLY))

MAILING

PO BOX 819
PARAGOULD, ARKANSAS 72451

ALLENENG.COM

CONNECT WITH US ON SOCIAL

