

**MAGIC SCREED®**

# **HD7070**

---



## **OPERATIONS & PARTS MANUAL**

Manual Part #: 046475 | Revision: -  
Language: English | Original Instructions



## NOTICE

This manual, or a copy of it, must be kept with the machine at all times.  
There is a manual storage container located on the machine for your convenience.

# *Magic Screed*

## OPERATIONS - PARTS

## MANUAL

This manual covers the products listed below:

<u>Part No.</u>	<u>Description</u>
047581	MAGIC SCREED

Copyright © 2015 Allen Engineering Corporation  
All rights reserved

All information, specifications, and illustrations in this manual are subject to change without notice and are based on the latest information at the time of publication. No part of this manual may be reproduced or transmitted in any form or by any means, electronic or mechanical, for any purpose, without the express written permission of Allen Engineering Corporation (AEC). AEC assumes no responsibility or liability for any errors or inaccuracies that may appear in this manual.

Allen Products are covered under one or more of the following patent numbers:

**U.S. Design Patents:** 344,736; 400,542; 400,544; 402,998; 402,999; 403,332; 404,041; 404,042; 410,931; 413,127; 416,564; 465,897; 466,909; 474,203.

**U.S. Utility Patents:** 5,108,220; 5,238,323; 5,328,295; 5,352,063; 5,405,216; 5,476,342; 5,480,257; 5,480,258; 5,533,831; 5,562,361; 5,567,075; 5,613,801; 5,658,089; 5,685,667; 5,803,658; 5,816,739; 5,816,740; 5,890,833; 5,934,823; 5,967,696; 5,988,938; 5,988,939; 6,019,433; 6,019,545; 6,048,130; 6,053,660; 6,089,786; 6,106,193; 6,857,815; 5,288,166; 6,582,153 B1, 7,108,449; 7,114,876; 7,316,523; 7,690,864 B2

**Canadian Patents:** 2,039,893.

First Issue: July 2015  
Amended: February 2018

Printed in U.S.A.

# Limited Warranty

## LIMITED WARRANTY and LIMITATION OF LIABILITY

Allen Engineering Corporation ("Allen") warrants its products to be free of defects in material or workmanship for the following periods:

**A. New Machines and Parts.....One Year**

Warranty period begins on first day of use by End User. This first day of use is established by the date of a completed Allen Warranty Card or a Bill of Sale to the End User. All warranty is based on the following limited warranty terms and conditions, including the disclaimer of implied warranties and consequential damages.

1. Allen's obligation and liability under this warranty is limited to repairing or replacing parts if, after Allen's inspection, there is determined to be a defect in material or workmanship. Allen reserves the choice to repair or replace.

2. If Allen chooses to replace the part, it will be at no cost to the customer and will be made available to the Allen Distributor, Dealer, or Rental Center from whom the End User purchased the product.

3. Replacement or repair parts, installed in the product, are warranted only for the remainder of warranty period of the product as though they were the original parts.

4. Allen does not warranty engines. Engine warranty claims should be made directly to an authorized factory service center for the particular engine manufacturer.

5. Allen's warranty does not cover the normal maintenance of products or its components (such as engine tune-ups and oil & filter changes). The warranty also does not cover normal wear and tear items (such as belts and consumables).

6. Allen's warranty will be void if it is determined that the defect resulted from operator abuse, failure to perform normal maintenance on the product, modification to product, alterations or repairs made to the product without the written approval of Allen. Allen specifically excludes from warranty any damage to any trowels resulting from an impact to the rotors.

7. Impact damage is not covered under the Allen Gear Box warranty.

8. Allen will pay shop labor on warranty items at the Allen Shop Labor Rate in existence on the date of the warranty claim. An Allen Labor Chart will determine the time allowed to complete a repair and will govern the shop labor hours that will be allowed.

9. Allen will pay freight on warranty replacement parts at worldwide standard ground rates. No warranty replacement parts will be shipped air freight at the expense of Allen. Allen only pays outbound freight charges when sending warranty replacement parts to the customer via ground service. Allen does not pay any inbound freight. However, if Allen determines this to be a warranted item, only then will Allen reimburse the customer for inbound freight at standard ground rates.

10. ALLEN ENGINEERING CORPORATION'S WARRANTY POLICY WILL NOT COVER THE FOLLOWING: TAXES; SHOP SUPPLIES; ENVIRONMENTAL SURCHARGES; AIR FREIGHT; TRAVEL TIME; LOSS OF TIME; INCONVENIENCE; LOSS OF RENTAL REVENUE; RENTAL COSTS OF EQUIPMENT USED TO REPLACE THE PRODUCT BEING REPAIRED; LOSS OF USE OF THE PRODUCT; COMMERCIAL LOSS; OR ANY OTHER CHARGES WHATSOEVER OR ANY LIABILITIES FOR DIRECT, INCIDENTAL, OR CONSEQUENTIAL DAMAGE OR DELAY.

11. ALLEN ENGINEERING CORPORATION MAKES NO OTHER WARRANTY, EXPRESSED OR IMPLIED. THIS LIMITED WARRANTY IS IN LIEU OF THE WARRANTY OF MERCHANTABILITY AND FITNESS. THERE ARE NO OTHER WARRANTIES THAT EXTEND BEYOND THE DESCRIPTION ON THIS DOCUMENT.

12. No Allen employee or representative is authorized to change this warranty in any way or grant any other warranty unless such change is made in writing and signed by an officer of Allen Engineering Corporation.

# Table of Contents

Title	Page
Limited Warranty	4
Table of Contents	5
Information Contained In This Manual	7
Dealer Information	8
Ordering Parts	9
<b>Section 1 - Safety</b>	
Safety Information	10
General Safety	11
Warning Logos	14
<b>Section 2 - Operations</b>	
Assembly and Starting Procedure	15
<b>Section 3 - Service</b>	
Service and Cleaning	17
<b>Section 4 - Parts</b>	
Screed Assembly	18
Magic Screed Parts Assembly	20
Magic Screed Power Units	25
Air Screed Parts	26
Replacement Part Procedure	27

**EC Declaration of Conformity  
Déclaration CE de conformité  
Declaración de Conformidad CE**

In accordance with EN 45014-1998 - Conformément à EN 4514-1998 - Conforme a EN 4514-1998

We/Nous/Nosotros                      Geroquip Inc  
Of/Situé au/Ubicado en                4795 rue Louis-B.-Mayer  
Laval, Quebec, Canada H7P 6G5

*Declare that/ Déclarons que/ Declaramos que*

*Equipment/Équipement/Equipamiento*

Vibrating concrete screed /  
Lame vibrante pour niveler le béton/  
Regla vibratoria para alisar concreto

*Model Name & Number/ Nom et numéro  
du modèle/ Nombre y Número de Modelo*

**Magic Screed** HD 6060 - HD 6161  
HD 7070 - HD 7171

*Serial Number / Numéro de série/ Número de Serie*

*Is in accordance with the following Directions /  
Est conforme aux directives suivantes /  
Cumple con las directivas siguientes*

98/37/EC	The Machinery Directive
89/336/EC	The Electromagnetic Compatibility Directive

*Has been designed and manufactured to the following specifications/  
A été conçu et fabriqué selon les spécifications suivantes/  
Diseñado y fabricado según las siguientes especificaciones*

BS EN 292-1:1991	Safety of machinery. Basic concepts, general principles for design. Basic terminology, methodology
BS EN 292-2:1991	Safety of machinery. Basic concepts, general principles for design. Technical principles and specifications
BS EN 1050:1997	Safety of machinery. Principles for risk assessment
pr EN 12649:1996	Concrete compactors and floating machines, Safety requirements
BS CISPR 12:1997	Vehicles, motorboats and spark-ignited engine-driven devices. Radio disturbance characteristics. Limits and methods of measurement

*I hereby declare that the equipment named above has been designed to comply with the relevant sections of the above referenced specifications. The unit complies with all essential requirements of the Directives. / Je déclare par la présente que l'équipement nommé ci-haut a été conçu pour répondre aux spécifications techniques mentionnées. Il est conforme à toutes les exigences essentielles des directives. / Declaro por la presente que el equipo nombrado arriba ha sido diseñado para cumplir con las especificaciones técnicas mencionadas. La unidad se conforma con todos los requisitos esenciales de las directivas.*

Signed by /Signé par/Firmado por :



Name / Nom / Nombre: W. Murray

**CE04**

# Information Contained in this Manual



This manual provides information and procedures to safely operate and maintain the Allen Machine.

For your own safety and protection from personal injury, carefully read, understand, and observe the safety instructions described in this manual. Keep this manual or a copy of it with the machine at all times.

Always operate this machine in accordance with the instructions described in this manual. A well maintained piece of equipment will provide many years of trouble free operation.

This manual is divided into the following sections:

## **SECTION 1 SAFETY**

## **SECTION 2 OPERATIONS**

## **SECTION 3 SERVICE**

## **SECTION 4 PARTS**

Complete any warranty requirements as specified by the engine manufacturer in their instructions found inside the manual box located on the operator's control panel.

Your engine is not manufactured by Allen Engineering Corporation, Inc, and therefore is not covered under Allen Engineering Corporation, Inc warranty.

Your engine manufacturer should be contacted if you wish to purchase a parts manual or a repair manual for your engine.

Refer to enclosed owners engine manual for complete O&M instructions. See your battery manufacturer for battery warranty.

## Dealer Information

Your Dealer has Allen Engineering Corporation trained mechanics and original Allen replacement parts. Always contact the Allen Dealer who sold you this machine for Allen Certified repairs and replacement parts.

Place Allen Dealer information below for future reference.

Dealer Name: \_\_\_\_\_

Phone #: (\_\_\_\_) - \_\_\_\_ - \_\_\_\_\_

Address: \_\_\_\_\_

City: \_\_\_\_\_ State: \_\_\_\_\_ Zip: \_\_\_\_\_

Salesman: \_\_\_\_\_ Mobile Phone \_\_\_\_\_

Additional Comments: \_\_\_\_\_

\_\_\_\_\_  
\_\_\_\_\_



## Ordering Parts

Section 4 contains illustrated parts lists for help in ordering replacement parts for your machine. Follow the instructions below when ordering parts to insure prompt and accurate delivery:

1. All orders for service parts - include the serial number for the machine. Shipment will be delayed if this information is not available.
2. Include correct description and part number from the "PARTS" section of this manual.
3. Specify exact shipping instructions, including the preferred routing and complete destination address.
4. DO NOT return parts to AEC without receiving written authorization from AEC. All authorized returns must be shipped pre-paid.
5. When placing an order, please contact the AEC dealer nearest you.



*All information, specifications, and illustrations in this manual are subject to change without notice and are based on the latest information at the time of publication.*

VISIT US!!!



[www.alleneng.com](http://www.alleneng.com)

LIKE US!!!



[www.facebook.com/AllenEngineering](http://www.facebook.com/AllenEngineering)

FOLLOW US!!!



[@alleneng](https://twitter.com/alleneng)

WATCH US!!!



[www.youtube.com/AllenMachinery](http://www.youtube.com/AllenMachinery)

## SECTION 1 SAFETY

## Safety Information

Do not operate or service the equipment before reading the entire manual. Safety precautions should be followed at all times when operating this equipment. Failure to read and understand the safety messages and operating instructions could result in injury to yourself and others.

### SAFETY NOTES

The four safety notes shown below will inform you about potential hazards that could injure you or others. The safety notes specifically address the level of exposure to the operator and are preceded by one of four words: DANGER, WARNING, CAUTION, or NOTICE.



Indicates a hazardous situation which, if not avoided, **will** result in death or serious injury.



Indicates a hazardous situation which, if not avoided, **could** result in death or serious injury.



Indicates a hazardous situation which, if not avoided, could result in minor or moderate injury.



Addresses practices not related to personal injury.



- **NEVER** operate this equipment without proper protective clothing, shatterproof glasses, respiratory protection, hearing protection, steel-toed boots and other protective devices required by the job or city and state regulations.



- **ALWAYS** avoid wearing jewelry or loose fitting clothes that may snag on the controls or moving parts as this can cause serious injury.

- **NEVER** operate this equipment when not feeling well due to fatigue, illness or when under medication.



- **NEVER** operate this equipment under the influence of drugs or alcohol.



- **ALWAYS** clear the work area of any debris, tools, etc. that would constitute a hazard while the equipment is in operation.

- **DO NOT** use the equipment for any purpose other than its intended purposes or applications.

- AEC does not assume responsibility for any accident due to equipment modifications. Unauthorized equipment modification will void all warranties.

- **NEVER** use accessories or attachments that are not recommended by AEC for this equipment. Damage to the equipment and/or injury to user may result.

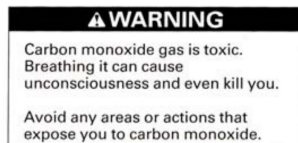
- **ALWAYS** know the location of the nearest fire extinguisher.



- **ALWAYS** know the location of the nearest first aid kit.



- Exhaust gas contains poisonous carbon monoxide. Avoid inhalation of exhaust gas. Never run the engine in a closed or confined area without proper ventilation.

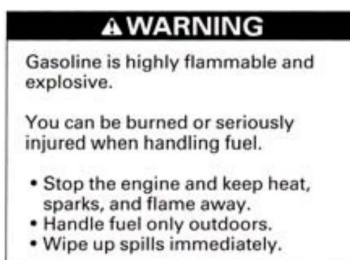


## SECTION 1 SAFETY

### General Safety cont.

#### **WARNING**

- Refuel with care. Gasoline is extremely flammable, and gasoline vapor can explode. Refuel outdoors, in a well ventilated area, with the engine stopped.
- **NEVER** smoke near gasoline, and keep flames and sparks away.
- **ALWAYS** store gasoline in an approved container. If any fuel is spilled make sure the area is dry before starting the engine.



#### **CAUTION**

- **NEVER** touch the hot exhaust manifold, muffler or cylinder. Allow these parts to cool before servicing equipment.
- Let the engine and exhaust system cool before touching.
- **DO NOT** put your hands on any vibrating or moving parts.



#### **NOTICE**

- Use unleaded gasoline with a pump octane rating of 86 or higher.
- When transporting, if the engine has been running, allow it to cool off for at least 15 minutes before loading the screed on a transport vehicle. A hot engine and exhaust system can burn or can ignite some materials.

### Engine Safety

#### NOTICE

- Before starting your honda engine, consult the **Honda owner's manual** supplied with your screed. **Keep this manual handy.**
- The Honda engine on your screed is a 4-cycle engine. It requires unleaded gasoline. Consult your **Honda owner's manual, page 8.**
- The on/off switch is located on the left-hand side, under the carburator of the engine supplied with your screed.

#### WARNING

- There is no oil in the engine. To check oil level, consult the **Honda owner's manual, page 9.**

#### NOTE

- The complete starting procedure is in your honda owner's manual, page 4.

HONDA ENGINE \_\_\_\_\_

ON/OFF SWITCH



## SECTION 1 SAFETY

### Warning Logos

#### **NOTE**

This label denotes the model number of your screed. It is recommended to record this information in this manual. This label can be found on the left handle.

MAGIC SCREED 630 RUE DE L'ARGON Québec, (Québec) CANADA, G2N 2J6	MODEL	HD 7070	ENGINE ASSY.
	YEAR	2006	MASS 13.70 KG
	ENGINE	HONDA	RPM 8500
	35CC	GX 35 TMS3	KW 1.1 KW

#### **CAUTION**

This label cautions against hot surfaces. To prevent serious burns, avoid touching these surfaces



#### **CAUTION**

This is a multi-purpose label that requires the operator to have maximum eye, hand, and feet protection.



#### **WARNING**

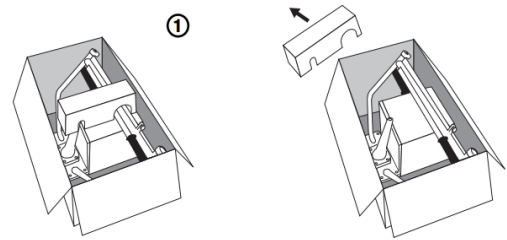
This label warns that the engine should be stopped before re-fueling your screed. It also notes to use unleaded gas only.



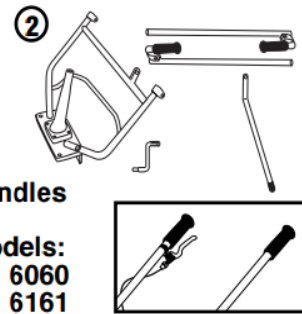
# Assembly and Starting Procedure

## SECTION 2 OPERATIONS

**STEP 1:** Take the protective foam out of the box.

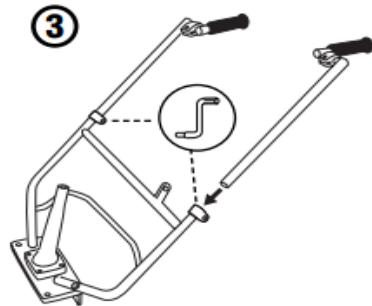


**STEP 2:** Remove both Adjustable handles and the base handle (assembled with vibrator and housing shaft).

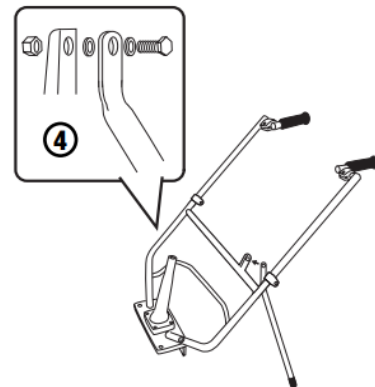


**STEP 3:** Insert the adjustable handles into the base handle (throttle control on the right side) and tighten the collar. Do not overtighten.

Note: If ordered with 360° adjustable handles, adjust and tighten to comfort.



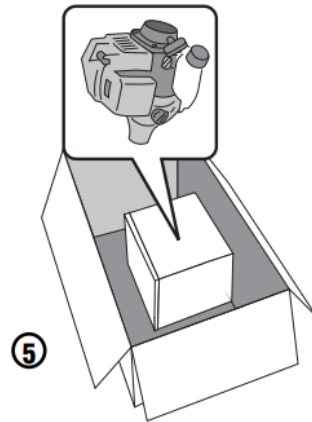
**STEP 4:** Place the stand with the flat side against the support, ensuring that one of the nylon washers is on each side of the stand (follow the drawing).



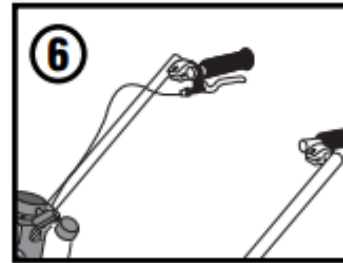
## SECTION 2 OPERATIONS

### Assembly and Starting Procedure cont.

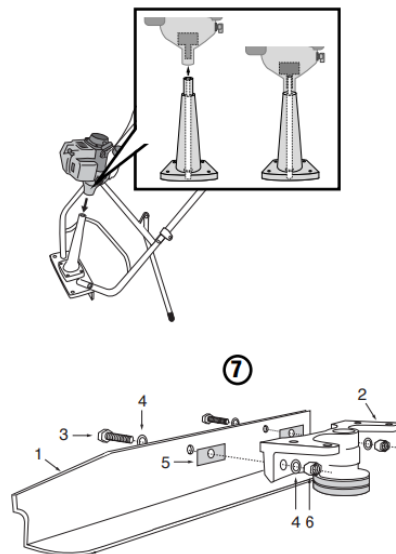
**STEP 5:** Assembly of the engine. Remove the engine from the protective foam. Place the engine on the housing shaft, make sure that the driveshaft is inserted in the clutch adaptor, and tighten. (Do not overtighten)



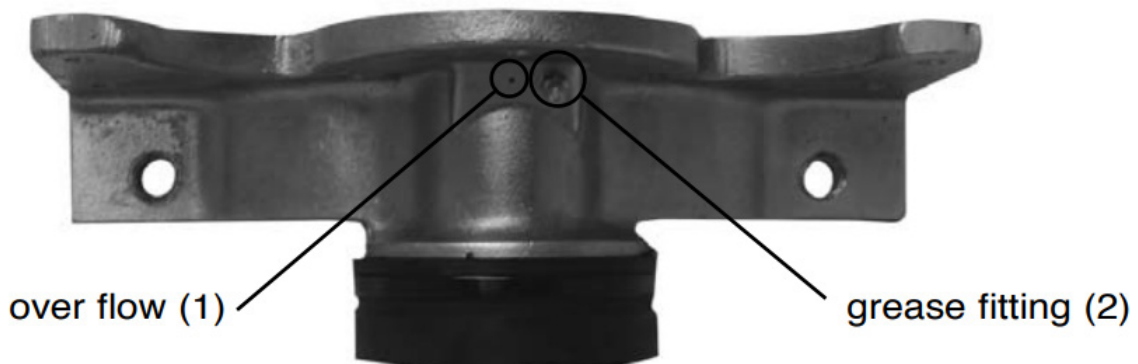
**STEP 6:** Put the rounded end of the throttle cable into the throttle control and adjust so that the rubber handle grip becomes the stopper.



**STEP 7:** Assemble the blade (1) on the screed vibrator (2) in the following order: bolts (3), washers (4), blade (1), plastic spacers (5), washers (4), nuts (6) (See Drawing). Tighten all the above at approximately **85 to 100 Lbs. torque. It is very important that the plastic spacers are always between the vibrator and the blade.** They are used as a cushion and prevent blade damage. If both are not in place this could void the warranty.

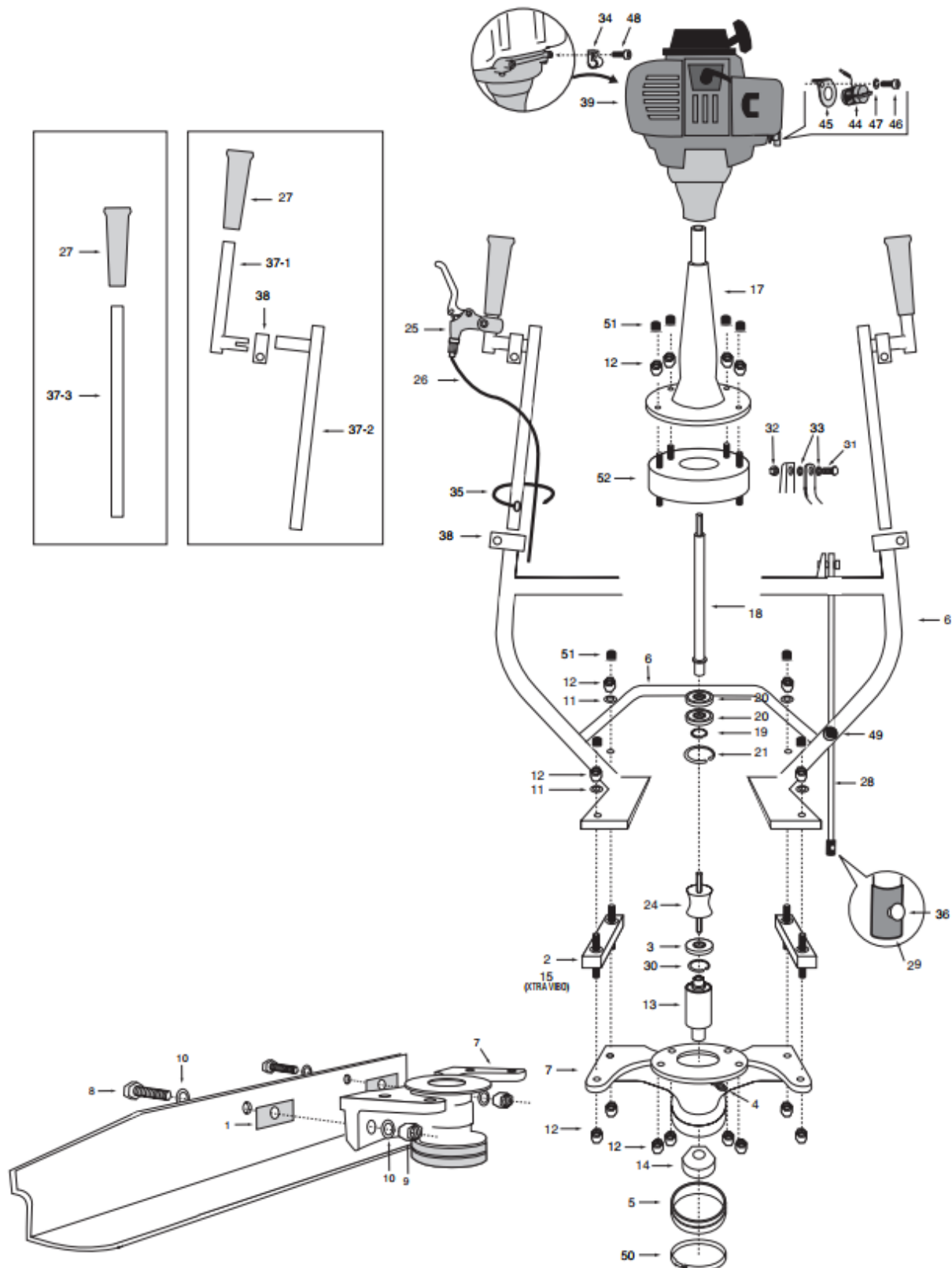


1. Before cleaning, servicing or repairing your screed, stop the engine and wait for any moving parts to stop then remove the spark plug cap.  
If the engine has been running, allow it to cool off for at least 15 to 20 minutes before cleaning with water.
2. **Grease:** the housing weight must be greased approximately every ten hours of operation. Do not over grease. An over flow (1) is located at the opposite side of the grease fitting (2) and must be cleaned before each greasing to prevent pressure from being applied by the grease on the bearing. Any such pressure could seize the bearing or damage your housing weight.
3. Your screed should be disassembled frequently for proper cleaning in order to prevent any concrete build-up that could **break or prematurely damage** your equipment. Warranty does not cover damage or performance problems on your screed resulting from neglected maintenance or cleaning.
4. Take apart the blade and clean any concrete accumulation.
5. Take apart the housing weight from the handles and clean the concrete underneath the handles and in the housing shaft.
6. Take the rubber cover off and clean any concrete or grease accumulation to allow the counter-weight to move freely.
7. Put everything back together making sure that the plastic spacers are between the blade and the housing weight. Tighten the blade following the assembly procedure to 85 to 100 Lb. -Ft. torque it is very important that the plastic spacers are always between the vibrator and the blade.



## SECTION 4 PARTS

## Screed Assembly Illustration



# Screed Assembly Parts List

## SECTION 4 PARTS

Item	Description	MODEL HD 6060	MODEL HD 6161	MODEL HD 7070	MODEL HD 7171	QTY
1	PLASTIC SPACER	10002	10002	10002	10002	2
2	VIBRO MOUNT	10003		10003		2
3	SEAL	10005	10005	10005	10005	1
4	GREASE FITTING	10008	10008	10008	10008	1
5	RUBBERCOVER	10009-2	10009-2	10009-2	10009-2	1
6	HANDLES	50004	50004	50004	50004	1
6	HANDLE HOLD STYLE	10011-2	10011-2	10011-2	10011-2	1
7	HOUSING WEIGHT	500003	500003	500003	500003	1
8	BOLT 1/2	10017	10017	10017	10017	2
9	NUT 1/2	011491	011491	011491	011491	2
10	WASHER 1/2	011490	011490	011490	011490	4
11	WASHER 8MM	10023	10023	10023	10023	4
12	NUT 8MM	10024	10024	10024	10024	16
13	SHAFT ASSY	10026	10026	10026	10026	1
14	COUNTER WEIGHT	10027	10027	10027	10027	1
15	XTRA VIBRO MOUNT		11003		11003	2
17	HOISING SHAFT	50001	50001	50001	50001	1
18	DRIVE SHAFT	20003-5050	20003-5050	20003-5050	20003-5050	1
19	CIRCLIP 13MM	20004	20004	20004	20004	1
20	BEARING	20005	20005	20005	20005	2
21	CIRCLIP 29MM	20006	20006	20006	20006	1
24	DRIVE AXLE	20009	20009	20009	20009	1
25	THROTTLE CONTROL	20010	20010	20010	20010	1
26	THROTTLE CABLE	20011-HD	20011-HD	20011-HD	20011-HD	1
27	GRIP	20012	20012	20012	20012	2
28	STAND	20013-1	20013-1	20013-1	20013-1	1
29	STAND RUBBER	20014	20014	20014	20014	1
30	CIRCLIP 1 1/2	20016	20016	20016	20016	1
31	BOLT 1/4	20017	20017	20017	20017	1
32	NUT 1/4	20018	20018	20018	20018	1
33	6MM NYLON FOR STAND	20023	20023	20023	20023	2
34	THROTTLE CABLE CLIP	20024	20024	20024	20024	1
35	TIE RAP	20026	20026	20026	20026	1
36	POP 1/8 FOR STAND RUBBER	20027	20027	20027	20027	1
37	ADJ HDLSLIP ON SECTION			20032-1	20032-1	
37-1	ADJ. HDLGRIP SECTION			20032-2	20032-2	2
37-2	ADJ HDL. LONG SECTION			20032-3	20032-3	2
37-3	TOP SECTION HANDLES	20032-4	20032-4			2
38	CLIP FOR HANDLES	20033	20033	20033	20033	2
39	HONDA ENG. GX 35 TSM3	50000	50000	50000	50000	1
44	ON OFF SWITCH HONDA	40005	40005	40005	40005	1
45	SWITCH BRACKET HONDA	40006	40006	40006	40006	1
46	BOLT FOR 40006	40007	40007	40007	40007	1
47	LOCK FOR 40008	40008	40008	40008	40008	1
48	BOLT FOR 20024 HONDA	40010	40010	40010	40010	1
49	STAND BUMPER	20035	20035	20035	20035	1
50	TIE RAP	20040	20040	20040	20040	1
51	CAP FOR 50002	50005	50005	50005	50005	8
52	ANTI VIBRATION SEAL	50002	50002	50002	50002	1

## SECTION 4 PARTS

### Magic Screed Parts Assembly

#### DA 4050 THROTTLE CABLE ASSEMBLY STANDARD

PART NO.	DESCRIPTION	QTY
20011-HD	THROTTLE CABLE	1
20010	THROTTLE CONTROL	1
20026	TIE RAP	1



#### DA 4051 THROTTLE CABLE ASSEMBLY LONG

PART NO.	DESCRIPTION	QTY
20011-HD	THROTTLE CABLE LONG	1
20010	THROTTLE CONTROL	1
20026	TIE RAP	1



#### DA 4055 RUBBER COVER ASSEMBLY

PART NO.	DESCRIPTION	QTY
10009-2	RUBBER COVER	1
20040	TIE RAP	1



#### DA 4057 GRIP ASSEMBLY

PART NO.	DESCRIPTION	QTY
20012	GRIP SET OF 2	2



#### DA 4059 VIBRO MOUNTS

PART NO.	DESCRIPTION	QTY
10003	VIBRO MOUNTS	2
10024	NUT 8 MM	8
10023	WASHER 8 MM	4



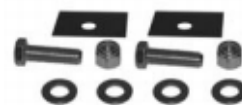
#### DA 4059-X X-TRA VIBRO MOUNTS

PART NO.	DESCRIPTION	QTY
11003	X-TRA VIBRO MOUNTS	2
10024	NUT 8 MM	8
10023	WASHER 8 MM	4



#### DA 4060 BOLT & NUT 1/2

PART NO.	DESCRIPTION	QTY
011491	NUT 1/2	2
10017	BOLT 1/2	2
011490	WASHER 1/2	4
10002	PLASTIC SPACER	2



### DA 4064 BEARING FOR DRIVE SHAFT

PART NO.	DESCRIPTION	QTY
20005	BEARING	2
20004	CIRCLIP 13 MM	1
20006	CIRCLIP 29 MM	1



### DA 4067 BEARING FOR HOUSING WEIGHT

PART NO.	DESCRIPTION	QTY
10026	SHAFT ASSY	1
20016	SNAP RING 38 MM	1
10005	SEAL	1
10008	GREASE FITTING	1



### DA 4070 SECONDARY LIFTING HANDLE (HD 4040 HD 5050)

PART NO.	DESCRIPTION	QTY
20036	SECONDARY LIFTING HANDLE	1



### DA 4073 ENGINE ADAPTOR GX 31

PART NO.	DESCRIPTION	QTY
40001	ENGINE ADAPTOR GX 31	1
40003	SNAP RING	1
40002	BOLT FOR 40001	1
40004	LOCK FOR 40002	1



### DA 4077 DRIVE AXLE

PART NO.	DESCRIPTION	QTY
20009	DRIVE AXLE	1



### DA 4080 DRIVE SHAFT ASSEMBLY HONDA

PART NO.	DESCRIPTION	QTY
20003-5050	DRIVE SHAFT HONDA	1
20005	BEARING	2
20006	SNAP RING 29 MM	1
20004	SNAP RING 13 MM	1



## SECTION 4 PARTS

### Magic Screed Parts Assembly cont.

#### DA 4081 DRIVE SHAFT ASSEMBLY ROBIN

PART NO.	DESCRIPTION	QTY
20003-2020	DRIVE SHAFT ROBIN	1
20005	BEARING	2
20006	SNAP RING 29 MM	1
20004	SNAP RING 13 MM	1



#### DA 4082 DRIVE SHAFT ASSEMBLY HONDA XTRA VIBO HD 5151 HD4141

PART NO.	DESCRIPTION	QTY
20003-2020	DRIVE SHAFT HONDA XTRA VIBO	1
20005	BEARING	2
20006	SNAP RING 29 MM	1
20004	SNAP RING 13 MM	1



#### DA 4088 STAND ASSEMBLY

PART NO.	DESCRIPTION	QTY
20013-1	STAND	1
20018	NYLON NUT 1/4	1
20023	NYLON WASHER 1/4	2
20017	BOLT 1/4	1
20014	STAND RUBBER	1
20027	RIVET	1
20035	STAND BUMPER	1



#### DA 4090 THROTTLE CABLE FOR ADJ. HANDLE

PART NO.	DESCRIPTION	QTY
20011-HD	THROTTLE CABLE LONG W./ ADJUSTMENT	1



#### DA 4091 THROTTLE CABLE SHORT

PART NO.	DESCRIPTION	QTY
20011-HD	THROTTLE CABLE W./ ADJUSTMENT	1



#### DA 4095 THROTTLE FOR ADJ. CABLE BAG OF 10

PART NO.	DESCRIPTION	QTY
20011-HD	THROTTLE CABLE LONG W./ ADJUSTMENT	10



#### DA 4096 THROTTLE CABLE SHORT BAG OF 10

PART NO.	DESCRIPTION	QTY
20011-HD	THROTTLE CABLE W./ ADJUSTMENT	10



## Magic Screed Parts Assembly cont.

## SECTION 4 PARTS

### DA 4097 ALLEN 6 MM 5 MM

PART NO.	DESCRIPTION	QTY
10056	ALLEN 6MM 5 MM	1



### DA 4098 TIE RAP FOR 10009-2

PART NO.	DESCRIPTION	QTY
20040	TIE RAP	10



### DA 4099

PART NO.	DESCRIPTION	QTY
20026	TIE RAP FOR HANDLES	10



### DA 4100

PART NO.	DESCRIPTION	QTY
50002	ANTI VIBRATION SEAL	1
10024	NUT 8 MM	8



### DA 4101

PART NO.	DESCRIPTION	QTY
50005	CAP FOR 8 MM NUT	8



### DA 4102 HOUSING WEIGHT ASSEMBLY

PART NO.	DESCRIPTION	QTY
10002	PLASTIC SPACER	2
10005	SEAL	1
10008	GREASE FITTING	1
10009-2	RUBBER COVER	1
10017	BOLT 1/2 NF X 1" 3/4	2
011491	UT 1/2 NF	2
011490	WASHER 1/2	4
10026	SHAFT ASSEMBLY	1
10027	COUNTER WEIGHT	1
20016	CIRCLIP 38 MM	1
20040	TIE RAP HOUSING WEIGHT	1
50003	HOUSING WEIGHT	1



## SECTION 4 PARTS

### Magic Screed Parts Assembly cont.

#### DA 4103 HOUSING SHAFT ASSEMBLY

PART NO.	DESCRIPTION	QTY
20003-5050	DRIVE SHAFT FOR HD-5050	1
20004	CIRCLIP 13 MM	1
20005	BEARING	2
20006	CIRCLIP 29 MM	1
50001	HOUSING SHAFT	1



#### DA 4103 HOUSING SHAFT ASSEMBLY

PART NO.	DESCRIPTION	QTY
20007	BOLT 5/16	4
20008	LOCK WASHER 5/16	4



### MAGIC SCREED POWER UNITS

- HD 6060 HONDA ENGINE WITH  
ADJUSTABLE HANDLES  
ON HEIGHT ONLY
- HD 6161 HONDA ENGINE WITH  
ADJUSTABLE HANDLES ON  
HEIGHT ONLY AND EXTRA  
VIBRO MOUNTS
- HD 7070 HONDA ENGINE WITH  
ADJUSTABLE HANDLES  
ON 360°
- HD 7171 HONDA ENGINE WITH  
ADJUSTABLE HANDLES ON  
360° AND EXTRA VIBRO MOUNTS



### BLADES

#### FITS ON ALL POWER UNITS

FT	M	#
4'	1.22	2050
6'	1.80	2051
8'	2.44	2052
10'	3.00	2053
12'	3.66	2054
14'	4.27	2055
16'	4.88	2056



\*Other sizes available...

### Table of handling information Weight & length of different components and assembly

BLADES	2050		2051		2052		2053		2054		2055		2056	
LENGTH	Feet 4	Meter 1.22	Feet 6	Meter 1.80	Feet 8	Meter 2.44	Feet 10	Meter 3.00	Feet 12	Meter 3.66	Feet 14	Meter 4.27	Feet 16	Meter 4.88
WEIGHT	LB 6.7	KG 3	LB 10.1	KG 4.6	LB 13.4	KG 6.1	LB 16.8	KG 7.63	LB 20.2	KG 9.16	LB 23.5	KG 10.68	LB 26.9	KG 11.77

## SECTION 4 PARTS

### Air Screed Parts

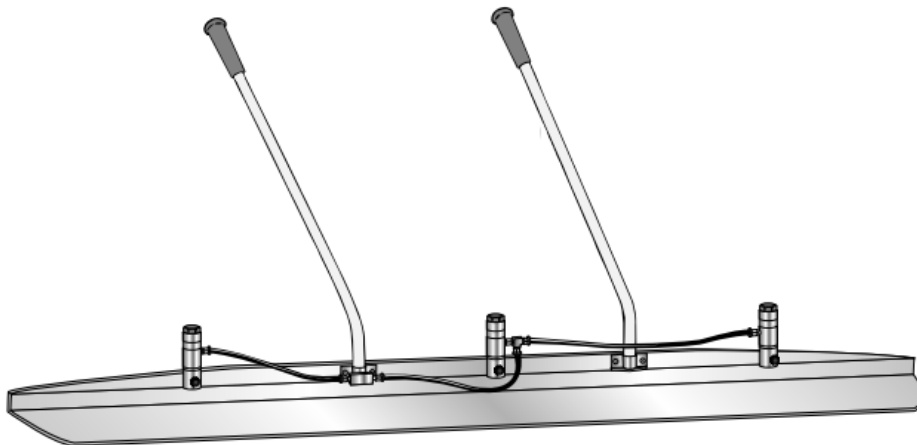
#### AIR SCREED PARTS

RR-1015	VIBRATOR ASSAMBLY
RR-1016	VIBRATOR REDUCING FITTING
RR-1018	HANDLE BOLT & NUT
RR-1019	TEE CONNECTOR FITTING
RR-1020	AIR HANDLE MAIN SECTION
RR-1020-1	AIR HANDLE ASSEMBLY
RR-1021	AIR VAVLE ASSEMBLY
20012	RUBBER HANDLE (SET OF TWO)
RR-1023	AIR HANDLE EXTENTION 5"
RR-1032	HANDLE L.H.
RR-1045	AIR MANIFOLD ASSEMBLY
RR-1070	1/4 HOSE FITTING
RR-1222	PNEUMATIC HOSE 3/8 (BY THE FEET)
RR-1222-M	PNEUMATIC HOSE 3/8 (BY THE METER)
RR-1072	BOLT 1/2 NF X 2 1/2 (USE 011491 & 011490)
RR-1073	1/4 PLUG

#### AIR POWERED SCREED

M	FT	#	BLADES	VIBRATOR
1.22	4'	R3	1011	2
1.80	6'	R2-6	1009	2
2.44	8'	R2	1010	3
3.00	10'	R4	1012	4
3.66	12	R5	1013	5

\* Must use a 25 cfm air compressor at 100 psi



We recommend AEC quality replacement parts, available from the AEC Customer Service Department or your nearest AEC Dealer.

Part numbers are subject to change without notice. Part numbers might be different outside of the United States of America. Use part numbers listed in the applicable parts list table when you place your order. If a part number changes, the AEC Customer Service Department or your nearest AEC dealer will have the latest part number for the replacement part.

Remember when you order replacement parts, you will need your model number and serial number. These are the numbers that you have recorded in the UNIT ID section of this manual. Please order replacement parts by the appropriate part number, not the key number.

This manual contains an illustrated parts list for help in ordering replacement parts for your machine. Follow the instructions below when ordering parts to insure prompt and accurate delivery:

1. All orders for service parts - include the serial number for the machine. Shipment will be delayed if this information is not available.
2. Include correct description and part number from the "PARTS" Section 4.
3. Specify exact shipping instructions, including the preferred routing and complete destination address.
4. DO NOT return parts to AEC without receiving written authorization from AEC. All authorized returns must be shipped pre-paid.
5. When placing an order, please contact the AEC Dealer nearest you.



*All information, specifications, and illustrations in this manual are subject to change without notice and are based on the latest information at the time of publication.*



**AEC FACTORY & HEADQUARTERS**

819 S. 5TH STREET  
PARAGOULD, ARKANSAS 72450  
870.236.7751  
800.643.0095 (TOLL FREE (USA ONLY))

**MAILING**

PO BOX 819  
PARAGOULD, ARKANSAS 72451

**ALLENENG.COM**

CONNECT WITH US ON SOCIAL

