

**RIDING TROWEL**

# **MSP475**

---



## **PARTS & DECALS MANUAL**

Manual Part #: 069599P | Revision: B  
Language: English | Original Instructions



**For information regarding the following, please see the “MSP475- Safety & Operator Manual”**

- Warranty Information
- Dealer Information
- How to identify the Model / Serial Numbers on the machine
- Engine Detail

# MSP475 RIDING TROWEL

## PARTS & DECAL

## MANUAL

This manual covers the products listed below:

| <u>Part No.</u> | <u>Description</u>                                |
|-----------------|---|
| 067405          | MSP475, 8ft, Kubota 57HP, Gas, Hydraulic Steering |

# Table of Contents

| Sect No. | Title                                       | Page      |
|----------|---|-----------|
| 1.0      | <b>Parts</b> . . . . .                      | <b>5</b>  |
|          | Seat Frame Assembly . . . . .               | 8         |
|          | Lower Unit Assembly . . . . .               | 10        |
|          | Engine Assembly . . . . .                   | 12        |
|          | Rotor Assembly - Left Hand . . . . .        | 14        |
|          | Rotor Assembly - Right Hand . . . . .       | 16        |
|          | Lower Rotor Assembly - Left Hand . . . . .  | 18        |
|          | Lower Rotor Assembly - Right Hand . . . . . | 19        |
|          | Spider Assembly - Left Hand . . . . .       | 20        |
|          | Spider Assembly - Right Hand . . . . .      | 21        |
|          | Hydraulic Steering Schematic . . . . .      | 22        |
|          | Hydraulic Component Kit . . . . .           | 23        |
|          | Hydraulic Fitting Kit / Hose Kit . . . . .  | 24        |
| 2.0      | <b>Decals</b> . . . . .                     | <b>25</b> |
|          | Front . . . . .                             | 26        |
|          | Rear . . . . .                              | 27        |
|          | Top . . . . .                               | 28        |
|          | Left/Right . . . . .                        | 29        |
|          | Revision Detail . . . . .                   | 30        |
|          | Copyright Information . . . . .             | 31        |

# **SECTION 1 PARTS**

## SECTION 1 PARTS

# Factory Service Information

This section contains the illustrated drawings and parts list for help in identifying and/or ordering replacement parts for your machine. Follow the instructions in the front section of this manual “Ordering Parts” when ordering replacement parts to ensure prompt and accurate delivery.

### **NOTE**

All set screws have blue (LOC-TITE™) applied at the factory. If set screw is removed or loosened for any reason re-apply blue (LOC-TITE™).

### **NOTE**

All grease fittings are capped with CAP PLUG GC-5 (AEC PN 015692) to protect the fitting. If cap becomes missing or damaged replace it as soon as possible.

### **NOTE**

Anti-Seize is applied at the factory to all drive line coupling, gear box main and counter shafts and pitch control threaded rod assemblies. If these parts are disassembled re-apply a light coat of a graphite based anti-seize.

**ALL REFERENCES MADE TO LEFT/RIGHT SIDES IN THIS MANUAL ARE SITTING ON MACHINE (SOM)  
[i.e. Left / Right are in reference from a sitting position on the machine]**

We recommend AEC quality replacement parts, available from the AEC Customer Service Department or your nearest AEC Dealer.

Part numbers are subject to change without notice. Part numbers might be different outside of the United States of America. Use part numbers listed in the applicable parts list table when you place your order. If a part number changes, the AEC Customer Service Department or your nearest AEC dealer will have the latest part number for the replacement part.

Remember when you order replacement parts, you will need your **MODEL NUMBER** and **SERIAL NUMBER**. These are the numbers that you have recorded in the UNIT ID section of the “Safety and Operations Manual” or by looking on the unit Identification Plate. Please order replacement parts by the appropriate part number, not the item number.

This manual contains an illustrated parts list for help in ordering replacement parts for your machine. Follow the instructions below when ordering parts to ensure prompt and accurate delivery:

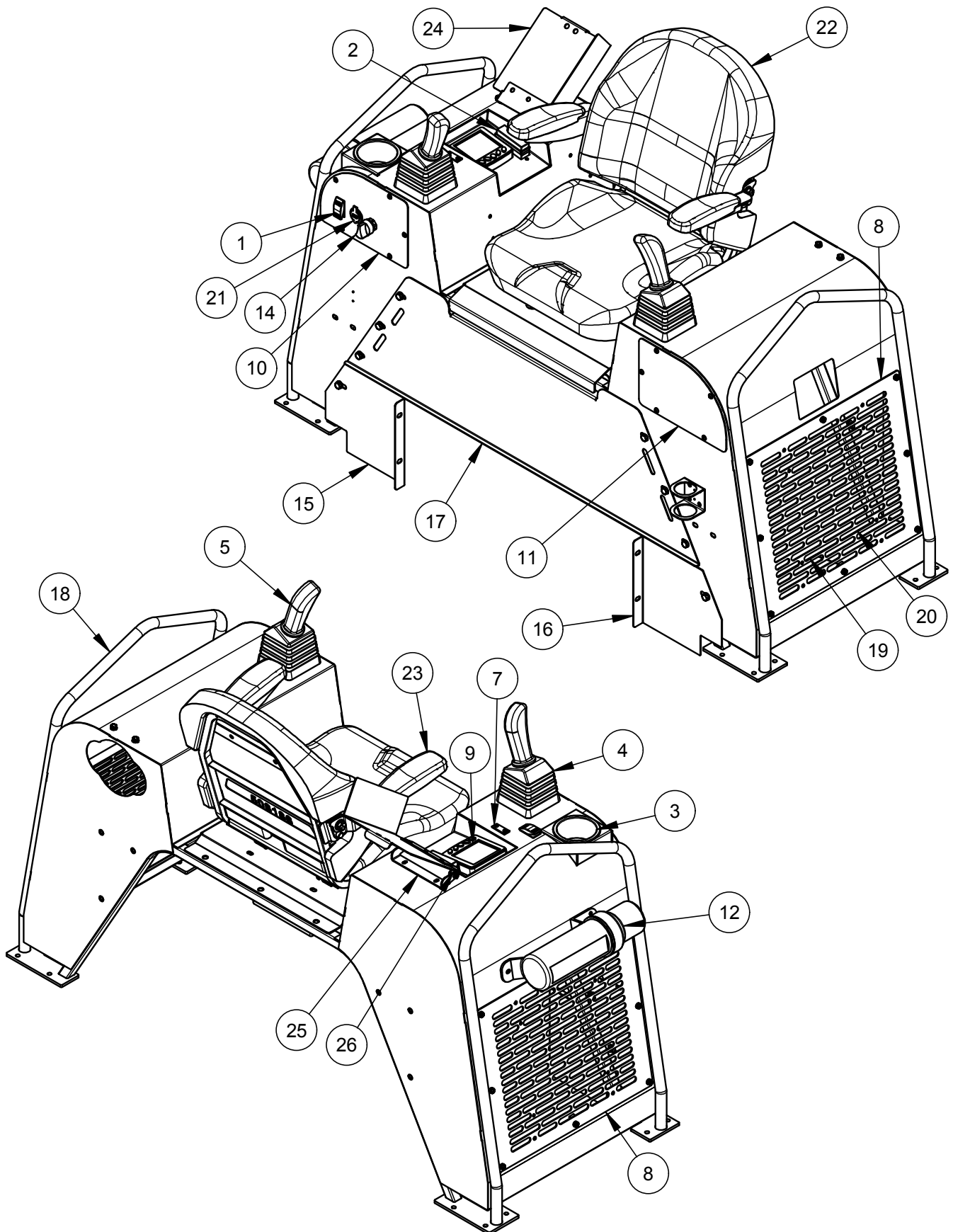
1. All orders for service parts - include the serial number for the machine. Shipment will be delayed if this information is not available.
2. Include correct description and part number
3. Specify exact shipping instructions, including the preferred routing and complete destination address.
4. **DO NOT** return parts to AEC without receiving written authorization from AEC. All authorized returns must be shipped pre-paid.
5. When placing an order, please contact the AEC Dealer nearest you.

### **NOTE**

All information, specifications, and illustrations in this manual are subject to change without notice and are based on the latest information at the time of publication.

## SECTION 1 PARTS

## Seat Frame Assembly





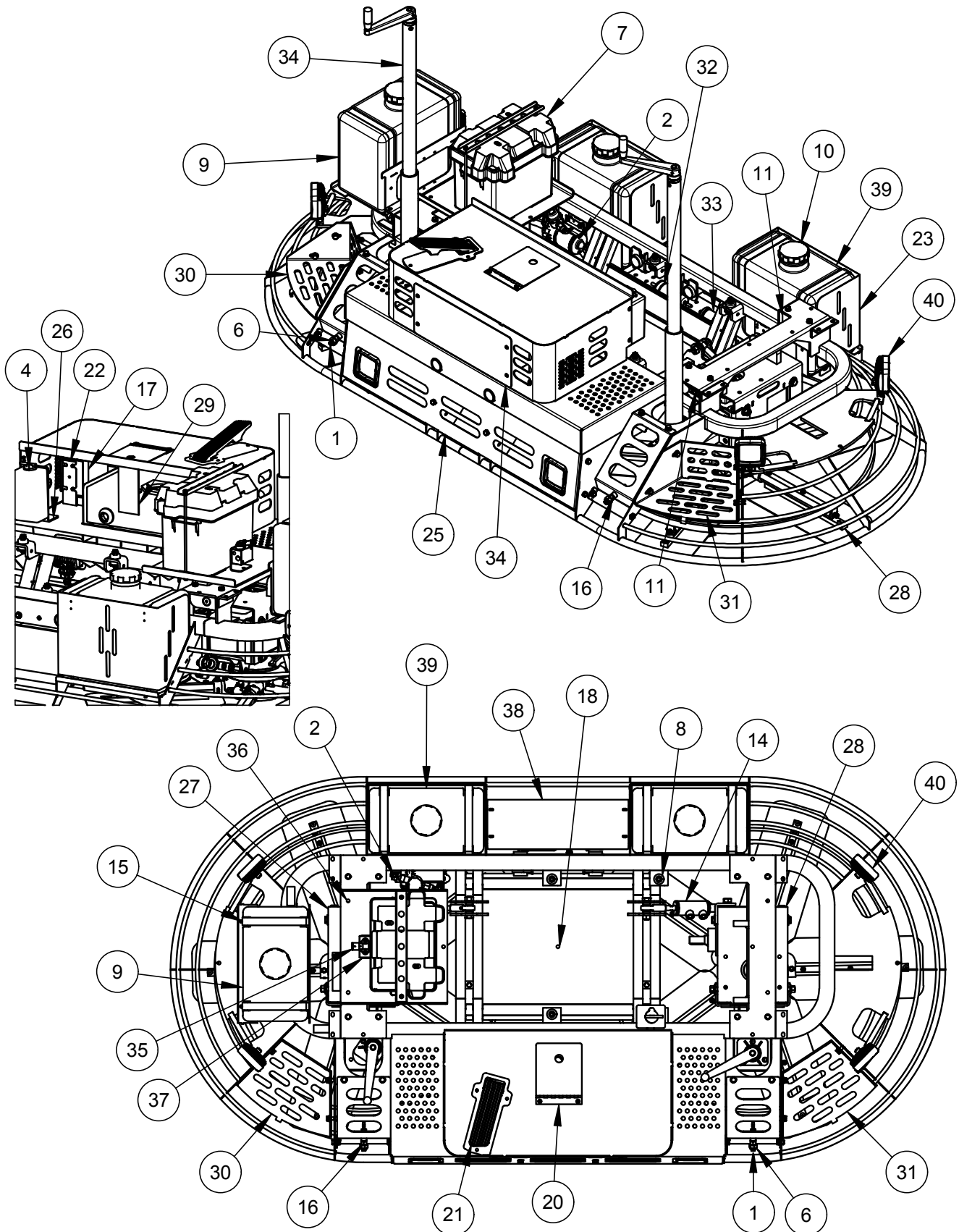
# Seat Frame Assembly

## SECTION 1 PARTS

| ITEM | PART NO. | DESCRIPTION  | QTY |
|------|----------|--|-----|
| -    | 069305   | Assembly, Seat Frame, MSP475   | -   |
| 1    | 032125   | Switch, Rocker, Single Pole  | 1   |
| 2    | 046737   | Block, Fuse, 8 Pole  | 1   |
| 3    | 041537   | Cup Holder   | 1   |
| 4    | 046736   | Joystick, Right Hand   | 1   |
| -    | 064844   | <b>(REPLACEMENT)</b> Joystick, Right Hand, Upper Handle ONLY (Not Shown) | -   |
| 5    | 046737   | Joystick, Left Hand  | 1   |
| -    | 064843   | <b>(REPLACEMENT)</b> Joystick, Left Hand, Upper Handle ONLY (Not Shown)  | -   |
| 6    | 053211   | Seat Prop (Not Shown)  | 1   |
| 7    | 056920   | Latch, Magnetic  | 1   |
| 8    | 060885   | Cover, for Fan   | 2   |
| 9    | 066227   | Controller, Murphy, PV380.2  | 1   |
| 10   | 066234   | Cover, Right Hand  | 1   |
| 11   | 066235   | Cover, Left Hand   | 1   |
| 12   | 066255   | Manual Tube  | 1   |
| 13   | 067676   | Bracket, for Controller Connections (Not Shown)                          | 1   |
| 14   | 068166   | Switch, Key  | 1   |
| -    | 070075   | <b>(REPLACEMENT)</b> Key, Engine   | -   |
| 15   | 069300   | Panel, Filler, Right Hand  | 1   |
| 16   | 069301   | Panel, Filler, Left Hand   | 1   |
| 17   | 069302   | Screen, Front  | 1   |
| 18   | 069306   | Weldment, Seat Frame   | 1   |
| 19   | 069651   | Shroud, Air, Left Hand   | 1   |
| 20   | 069652   | Shroud, Air, Right Hand  | 1   |
| 21   | 069850   | USB, 12 VDC  | 1   |
| 22   | 069874   | Seat, Rider  | 1   |
| 23   | 069875   | Seat, Arm Rests, Left/Right  | 1   |
| 24   | 070579   | Cover, Control Panel   | 1   |
| 25   | 070580   | Bracket, Hinge for Controller Panel                                      | 1   |
| 26   | 070583   | Bearing, Sleeve, Flanged, 1/4" I.D. x 1/4", Bronze                       | 2   |

# SECTION 1 PARTS

## Lower Unit Assembly



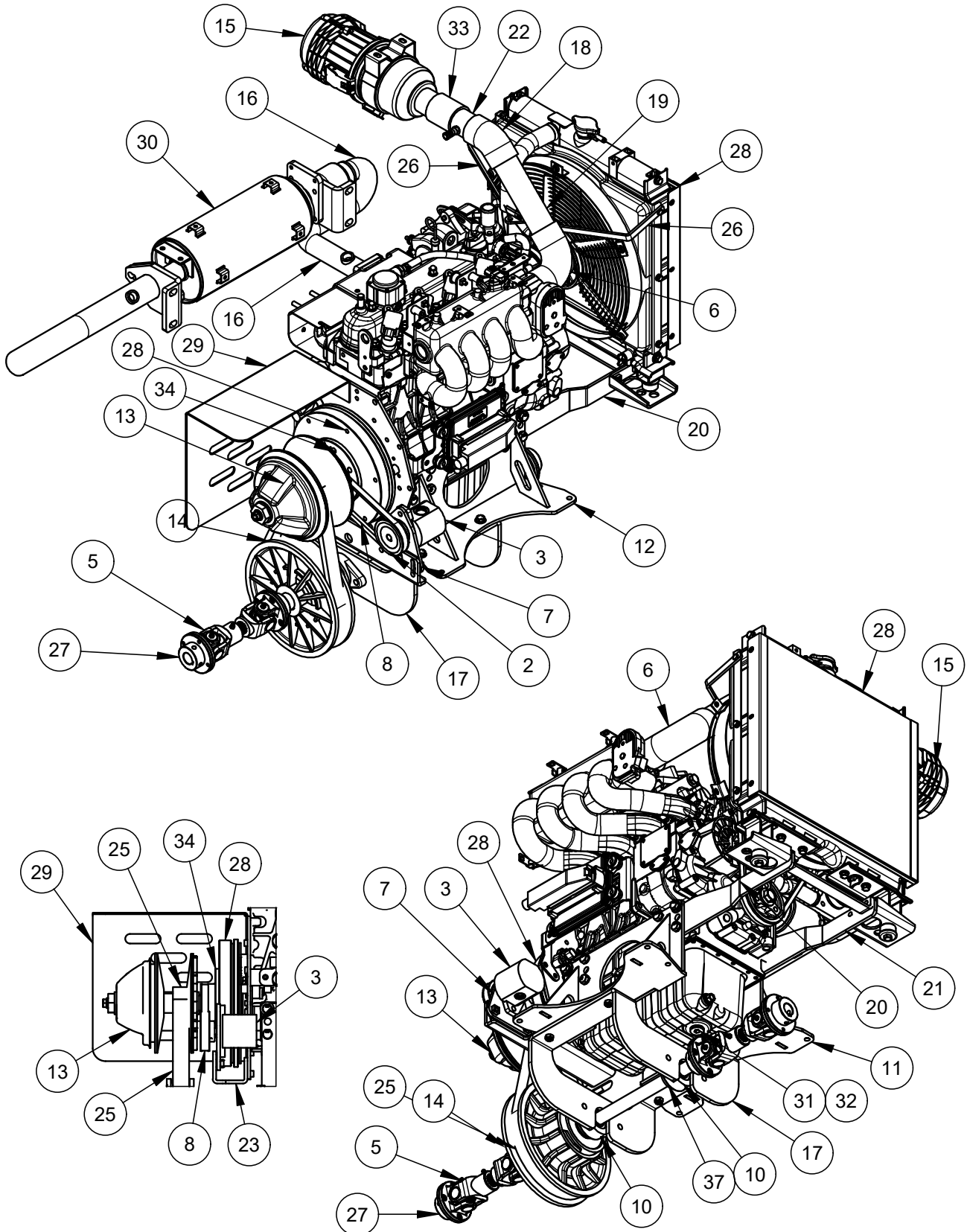
# Lower Unit Assembly

## SECTION 1 PARTS

| ITEM | PART NO. | DESCRIPTION                                       | QTY |
|------|----------|---|-----|
| -    | 069310   | Assembly, Lower Unit, MSP475                      | -   |
| 1    | 012702   | Tip, Spray, Brass, 80° x 0.10 GPM                 | 2   |
| 2    | 033735   | Pump, for Spray System                            | 1   |
| 3    | 037771   | Battery, 12 V, 655 CA (Not Shown)                 | 1   |
| 4    | 037791   | Tank, Overflow, with Bracket                      | 1   |
| 5    | 040209   | Filter, for Spray System (Not Shown)              | 1   |
| 6    | 012705   | Retainer, Metal Spray Tip                         | 2   |
| 7    | 046696   | Box, for Battery                                  | 1   |
| 8    | 046744   | Mount, Vibration, 90#, for Engine                 | 4   |
| 9    | 047700   | Tank, Water, 6 Gallon, Plastic                    | 1   |
| 10   | 047701   | Cap, 3-1/2", Vented, Black, for Gas Tank          | 2   |
| 11   | 048559   | Block, Mounting, for Rotor Assembly               | 4   |
| 12   | 048560   | Bearing, Ø1" I.D., Plastic Flange (Not Shown)     | 4   |
| 13   | 048627   | Spacer, Steering Connection                       | 6   |
| 14   | 048660   | Cylinder, Steering, 1-1/2" x 5/8"                 | 3   |
| 15   | 048921   | Strap, Tank                                       | 2   |
| 16   | 071531   | Nozzle, Male, Straight                            | 2   |
| 17   | 052930   | Cooler, Air/Oil                                   | 1   |
| 18   | 056888   | Pan, for Undercarriage                            | 1   |
| 19   | 059544   | Plate, Front Cover                                | 1   |
| 20   | 060910   | Weldment, Door                                    | 1   |
| 21   | 063341   | Pedal, Foot, Electronic                           | 1   |
| 22   | 064247   | Brace, for Cooler                                 | 2   |
| 23   | 064562   | Weldment, Tank Guard                              | 2   |
| 24   | 065244   | Strainer, Poly, 100 micron Mesh, with Check Valve | 2   |
| 25   | 066198   | Weldment, Front Panel                             | 1   |
| 26   | 066228   | Bracket, Mounting, for Overflow                   | 1   |
| 27   | 066301   | Assembly, Rotor, Right Hand                       | 1   |
| 28   | 066314   | Assembly, Rotor, Left Hand                        | 1   |
| 29   | 066329   | Weldment, Hydraulic Tank                          | 1   |
| 30   | 067193   | Weldment, Step, Right Hand                        | 1   |
| 31   | 067198   | Weldment, Step, Left Hand                         | 1   |
| 32   | 067269   | Pump, Fuel, for Kubota WG1605                     | 1   |
| 33   | 067275   | Filter, Fuel, for Kubota WG1605                   | 1   |
| 34   | 068442   | Assembly, Pitch Control                           | 2   |
| 35   | 069231   | Manifold, Fuel, for Kubota WG1605                 | 1   |
| 36   | 069304   | Tray, for Battery                                 | 1   |
| 37   | 069313   | Mounting Bracket, for Fuel Manifold               | 1   |
| 38   | 069314   | Cover Plate                                       | 1   |
| 39   | 069503   | Tank, 6 Gallon, Plastic                           | 2   |
| 40   | 069835   | Light, LED, 1200 Lumens, 12 VDC (1.3 AMP)         | 6   |

# SECTION 1 PARTS

## Engine Assembly



# Engine Assembly

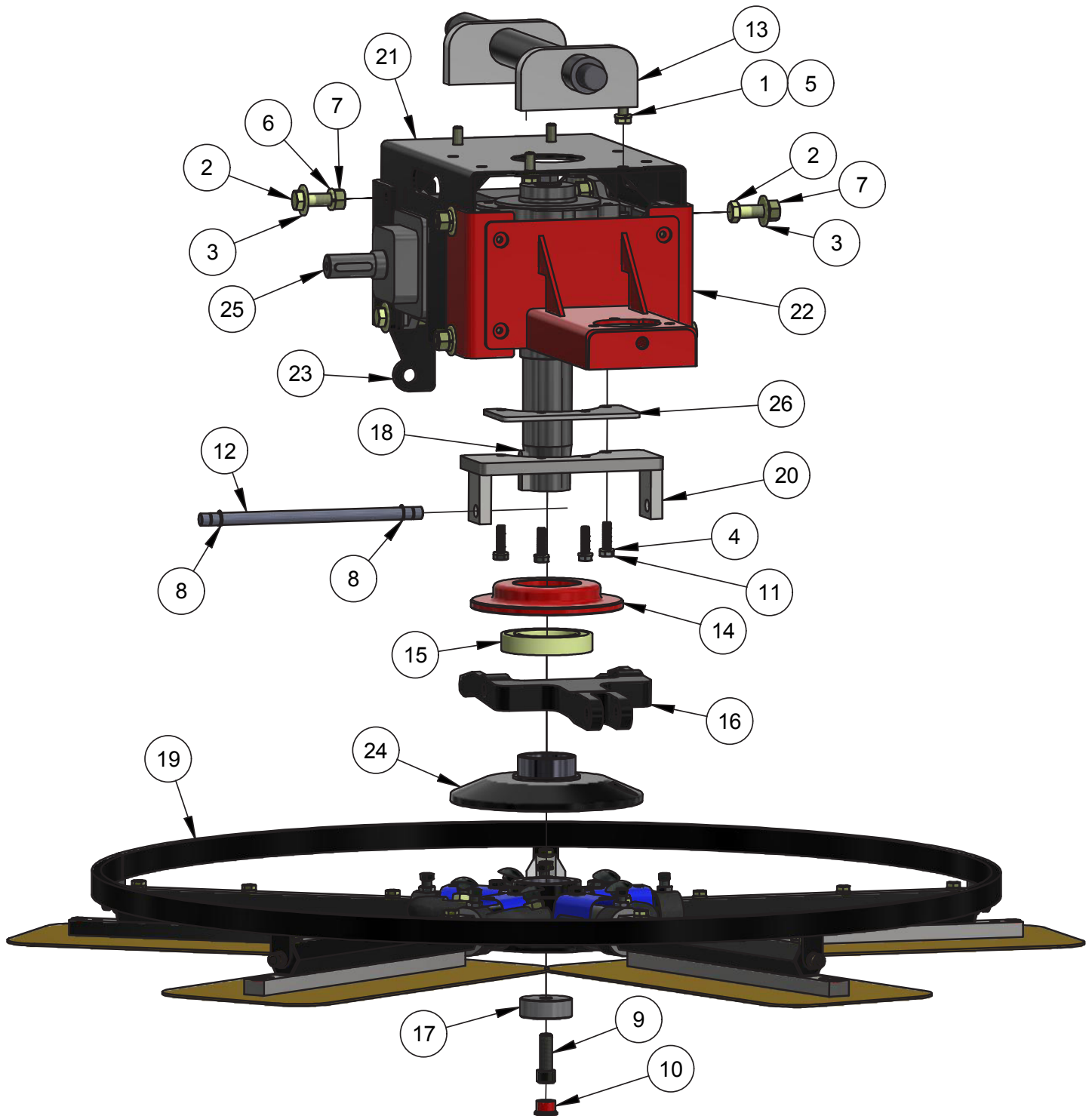
## SECTION 1 PARTS

| ITEM | PART NO. | DESCRIPTION  | QTY |
|------|----------|--|-----|
| -    | 069309   | Assembly, Engine, MSP475                           | -   |
| 1    | 024820   | Key, 1/4" x 4"                                     | 1   |
| 2    | 046550   | Pulley, AK30 x 1/2" Bore with 2 Set Screws         | 1   |
| 3    | 046738   | Pump, Hydraulic, Auxiliary                         | 1   |
| 4    | 047635   | Hub, Ø1" Bore, U-Joint, Center Shaft               | 2   |
| 5    | 047637   | Assembly, U-Joint, Telescoping                     | 2   |
| 6    | 049581   | Elbow, Rubber, 2" I.D., 90°                        | 1   |
| 7    | 056912   | Weldment, Mounting Plate, for Hydraulic Pump       | 1   |
| 8    | 056922   | Belt, V-Type, 24"L x 1/2"W x 5/16"H, High-Power    | 1   |
| 9    | 063337   | Weldment, Tail Pipe                                | 1   |
| 10   | 064254   | Bearing, Flange, 1"                                | 2   |
| 11   | 065220   | Weldment, Engine Mount, Rear                       | 1   |
| 12   | 065224   | Weldment, Engine Mount, Front                      | 1   |
| 13   | 065967   | Clutch, Driver                                     | 1   |
| 14   | 066107   | Pulley, Driven                                     | 1   |
| 15   | 066237   | Assembly, Air Cleaner                              | 1   |
| 16   | 066344   | Inlet, Exhaust                                     | 1   |
| 17   | 066678   | Support, for Bearing                               | 1   |
| 18   | 066902   | Elbow, Rubber, 2" I.D., 45°                        | 1   |
| 19   | 066929   | Tube, Intake, for Breather                         | 1   |
| 20   | 067246   | Bracket, for Radiator Mount Pusher Fan, Right Hand | 1   |
| 21   | 067247   | Bracket, for Radiator Mount Pusher Fan, Left Hand  | 1   |
| 22   | 067367   | Connector, Intake Hose                             | 1   |
| 23   | 067397   | Bracket, Mounting, for Hydraulic Pump              | 1   |
| 24   | 067407   | Spacer, for Clutch                                 | 1   |
| 25   | 067506   | Belt, CVT  | 1   |
| 26   | 068317   | Bracket, Radiator Support Pusher Fan               | 2   |
| 27   | 068500   | Hub, U-Joint, Ø24mm Bore, Center Shaft             | 2   |
| 28   | 068955   | Engine, Kubota WG1605                              | 1   |
| 29   | 069299   | Guard, for Clutch                                  | 1   |
| 30   | 069619   | Muffler, CAT, for Kubota WG1605                    | 1   |
| 31   | 069654   | Plug, Oil, M22 x 1-1/2                             | 1   |
| 32   | 069655   | Gasket, for Drain Plug                             | 1   |
| 33   | 069730   | Sleeve, 2" I.D. x 2-1/2", Connecting, Silicone     | 1   |
| 34   | 071373   | Shaft, Stub, with Pulley                           | 1   |
| 35   | 071535   | Plate, Spacer for Power Steering Pump              | 1   |
| 36   | 071538   | Shield, Heat                                       | 1   |
| 37   | 071546   | Shaft, Drive                                       | 1   |

| ITEM | PART # | DESCRIPTION                                       | QTY |
|------|--------|---|-----|
| A    | 043920 | (REPLACEMENT) Filter, Fuel, Kubota WG1605         | 1   |
| B    | 064828 | (REPLACEMENT) Filter, Oil, Kubota WG1605          | 1   |
| C    | 069428 | (REPLACEMENT) Filter, Air, Primary, Kubota WG1605 | 1   |
| D    | 069249 | (REPLACEMENT) Filter, Air, Safety, Kubota WG1605  | 1   |

## SECTION 1 PARTS

## Rotor Assembly - Left Hand



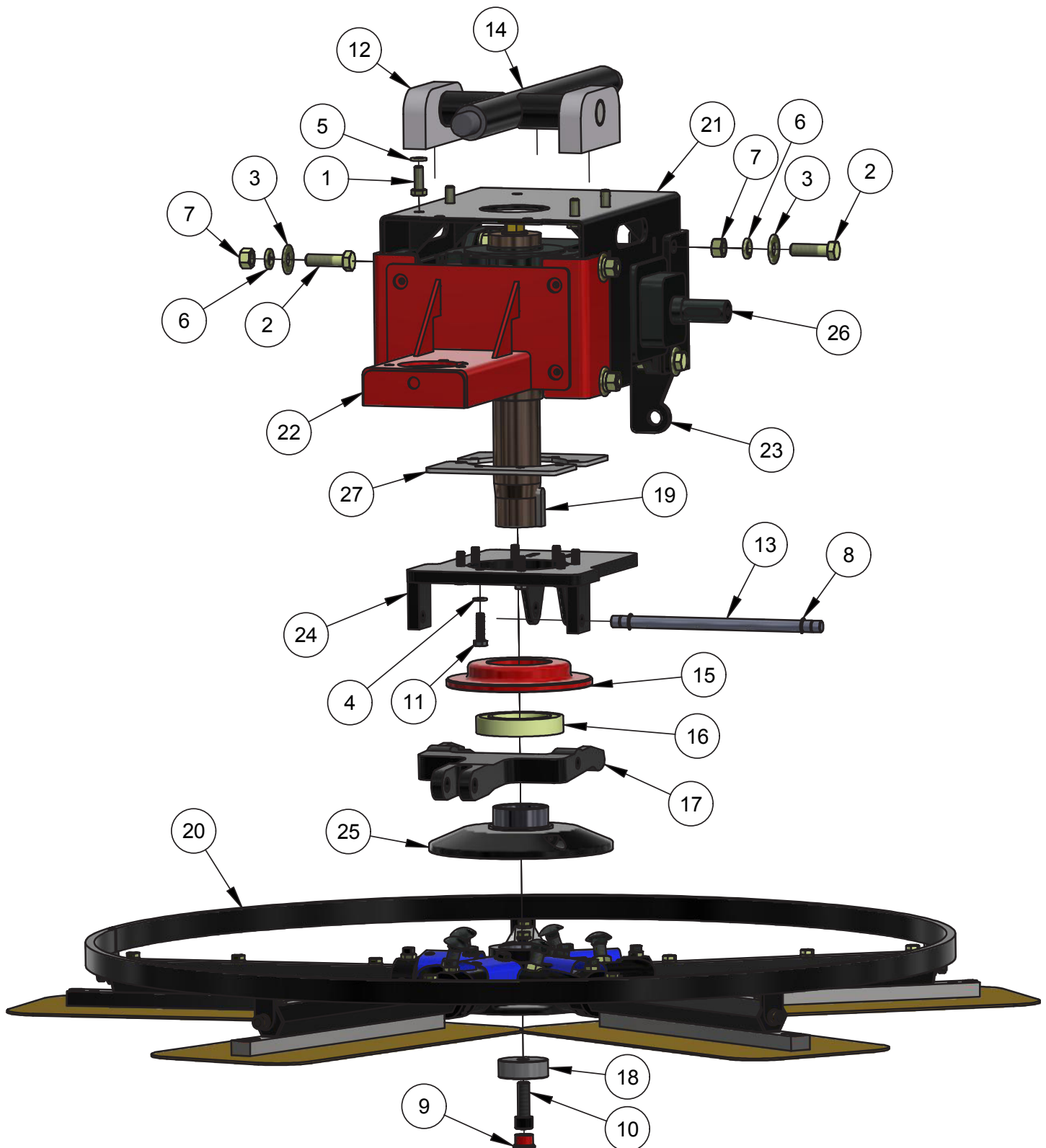
# Rotor Assembly - Left Hand

## SECTION 1 PARTS

| ITEM | PART NO. | DESCRIPTION                                      | QTY |
|------|----------|--|-----|
| -    | 066314   | Assembly, Rotor, Left Hand                       | -   |
| 1    | 010036   | Fastener, Bolt, HHCS, 3/8" -16 x 1", Grade 8     | 4   |
| 2    | 010070   | Fastener, Bolt, HHCS, 1/2" -13 x 1-3/4", Grade 8 | 8   |
| 3    | 010085   | Fastener, Washer, Flat, 1/2", Grade 8            | 8   |
| 4    | 010090   | Fastener, Washer, Lock, 5/16", Grade 8           | 4   |
| 5    | 010091   | Fastener, Washer, Lock, 3/8", Grade 8            | 4   |
| 6    | 010093   | Fastener, Washer, Lock, 1/2", Grade 8            | 8   |
| 7    | 010106   | Fastener, Nut, Hex, 1/2" -13, Grade 8            | 8   |
| 8    | 015677   | Ring, Retaining, Ø7/16", E-Style                 | 2   |
| 9    | 015691   | Fastener, SHCS, 1/2" -13 x 1-1/2", Right Hand    | 1   |
| 10   | 015693   | Plug, Plastic Cap, EC12                          | 1   |
| 11   | 037820   | Fastener, HHCS, 8mm x 1-1/4 x 30mm               | 4   |
| 12   | 048628   | Pin, for Yoke Arm                                | 1   |
| 13   | 048966   | Crosshead, 2-Way                                 | 1   |
| 14   | 049599   | Cap, for Bearing                                 | 1   |
| 15   | 049697   | Bearing, for Spider Assembly                     | 1   |
| 16   | 049698   | Pitch, Yoke Arm                                  | 1   |
| 17   | 049708   | Washer, Retaining                                | 1   |
| 18   | 050700   | Key, Engine, for Rotor                           | 1   |
| 19   | 060543   | Assembly, Spider, Left Hand                      | 1   |
| 20   | 065231   | Bracket, for Gearbox                             | 1   |
| 21   | 065242   | Weldment, Gearbox Housing                        | 1   |
| 22   | 066302   | Weldment, Crosshead Gearbox Mount                | 1   |
| 23   | 066318   | Bracket, Cylinder Mount, Left Hand               | 1   |
| 24   | 067589   | Plate, Pressure                                  | 1   |
| 25   | 069161   | Gearbox, Left Hand                               | 1   |
| 26   | 069653   | Shim, for Gearbox Bracket                        | 1   |



## Rotor Assembly - Right Hand





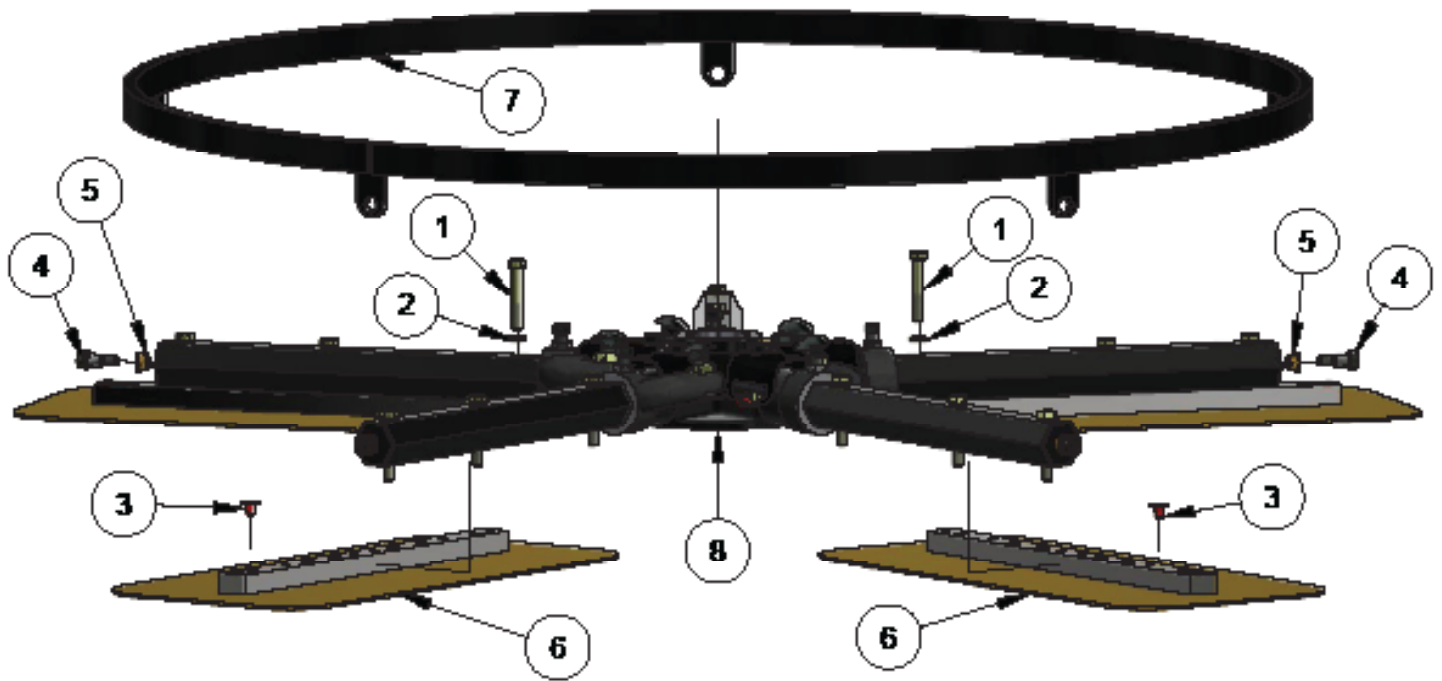
# Rotor Assembly - Right Hand

## SECTION 1 PARTS

| ITEM | PART NO. | DESCRIPTION   | QTY |
|------|----------|---|-----|
| -    | 066109   | Assembly, Rotor, Right Hand                         | -   |
| 1    | 010036   | Fastener, Bolt, HHCS, 3/8" - 16 x 1", Grade 8       | 4   |
| 2    | 010070   | Fastener, Bolt, HHCS, 1/2" - 13 x 1-3/4", Grade 8   | 8   |
| 3    | 010085   | Fastener, Washer, Flat, 1/2", Grade 8               | 8   |
| 4    | 010090   | Fastener, Washer, Lock, 5/16", Grade 8              | 8   |
| 5    | 010091   | Fastener, Washer, Lock, 3/8", Grade 8               | 4   |
| 6    | 010093   | Fastener, Washer, Lock, 1/2", Grade 8               | 8   |
| 7    | 010106   | Fastener, Nut, Hex, 1/2" - 13, Grade 8              | 8   |
| 8    | 015677   | Ring, Retaining, Ø7/16", E-Style                    | 2   |
| 9    | 015693   | Plug, Cap, Plastic, EC12                            | 1   |
| 10   | 020155   | Fastener, SHCS, Screw, 1/2" - 13 x 1-1/2, Left Hand | 1   |
| 11   | 037820   | Fastener, HHCS, 8mm x 1.25 x 30mm                   | 8   |
| 12   | 048561   | Assembly, Bearing, for Rotor Mount                  | 2   |
| 13   | 048628   | Pin, Yoke Arm                                       | 1   |
| 14   | 048964   | Creoshead, 4-Way                                    | 1   |
| 15   | 049599   | Cap, Bearing  | 1   |
| 16   | 049697   | Bearing, for Spider Assembly                        | 1   |
| 17   | 049698   | Pitch, Yoke Arm                                     | 1   |
| 18   | 049708   | Washer, Retaining                                   | 1   |
| 19   | 050700   | Key, Rotor  | 1   |
| 20   | 060544   | Assembly, Spider, Right Hand                        | 1   |
| 21   | 065242   | Weldment, Gearbox Housing                           | 1   |
| 22   | 066302   | Weldment, Crosshead Gearbox Mount                   | 1   |
| 23   | 066304   | Bracket, Cylinder Mount, Right Hand                 | 1   |
| 24   | 066305   | Bracket, for Gearbox                                | 1   |
| 25   | 067589   | Plate, Pressure                                     | 1   |
| 26   | 068160   | Gearbox, Right Hand                                 | 1   |
| 27   | 069653   | Shim, for Gearbox Bracket                           | 2   |

## SECTION 1 PARTS

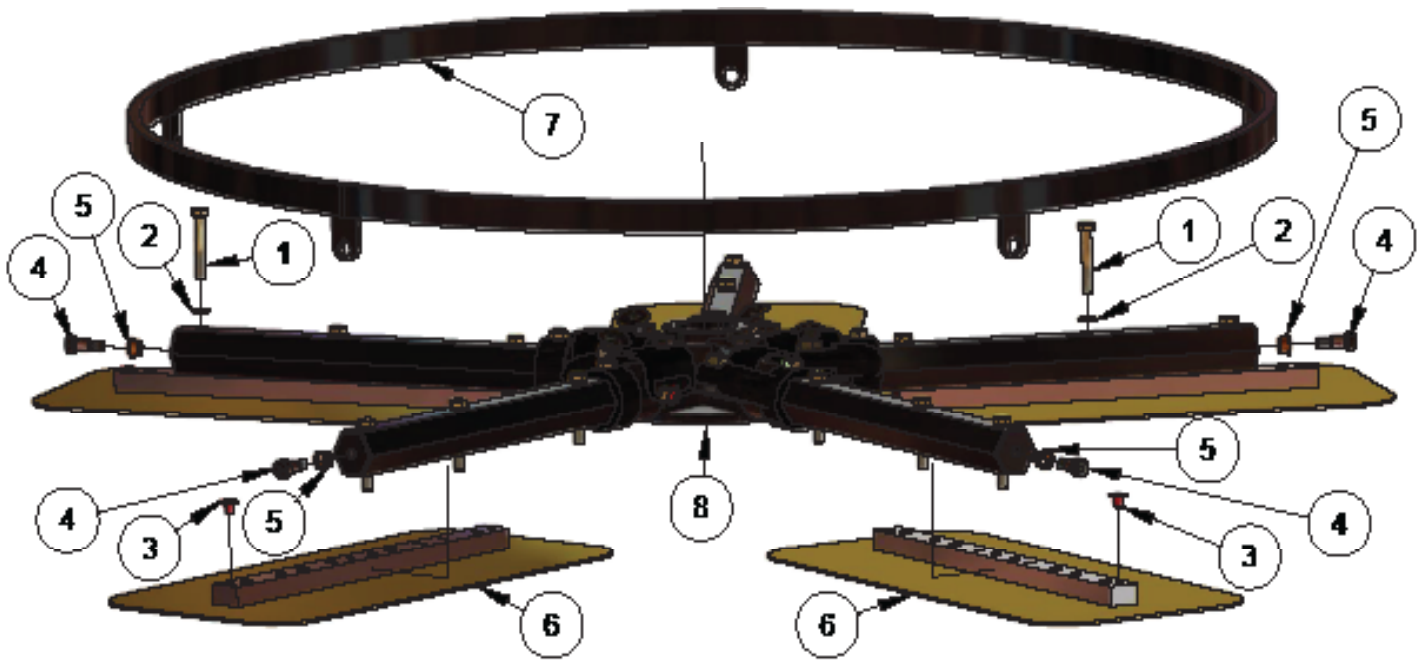
### Lower Rotor Assembly - Left Hand



| ITEM | PART #  | DESCRIPTION                                  | QTY |
|------|---------|--|-----|
| -    | 060543  | Assembly, Lower Rotor, Left Hand             | -   |
| 1    | 010024  | Fastener, Bolt, HHCS, 5/16"-18 x 2", Grade 8 | 15  |
| 2    | 010090  | Fastener, Washer, Lock, 5/16", Grade 8       | 15  |
| 3    | 015694  | Cap, Grease, W-1, Red, Plastic, Tapered      | 5   |
| 4    | 025091  | Fastener, Bolt, Shoulder, 3/8" x 1/2"        | 5   |
| 5    | 025092  | Bushing, Bronze, 3/8" x 1/2" x 5/16"         | 5   |
| 6    | 028778V | Blade, Flat Finish, 8" x 17", Gold           | 5   |
| 7    | 040833  | Ring, Stabilizer, 1200VG, Standard, 5-Blade  | 1   |
| 8    | 067587  | Assembly, Spider, Left Hand, 5-Blade         | 1   |

# Lower Rotor Assembly - Right Hand

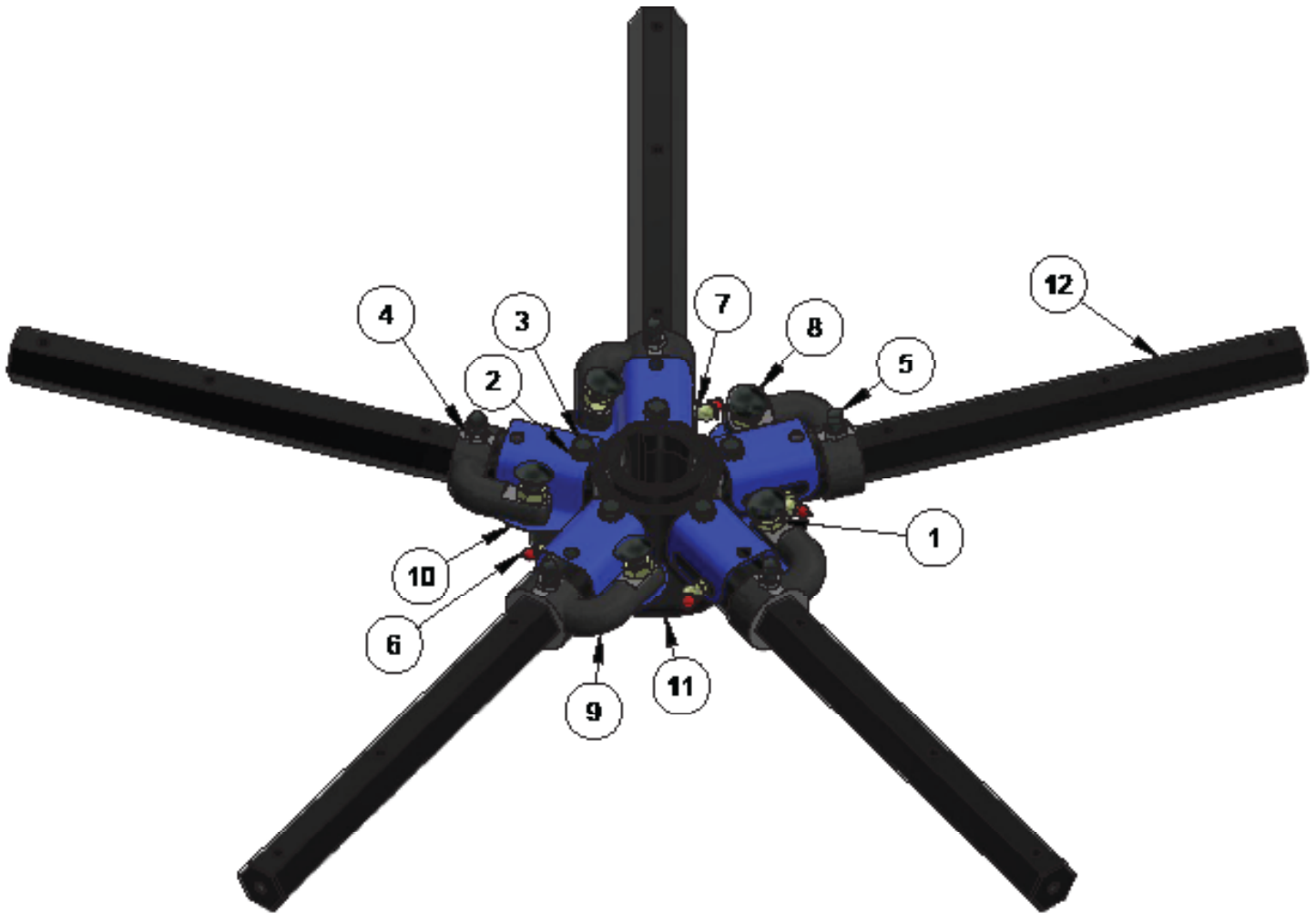
## SECTION 1 PARTS



| ITEM | PART #  | DESCRIPTION                                  | QTY |
|------|---------|--|-----|
| -    | 060544  | Assembly, Lower Rotor, Right Hand            | -   |
| 1    | 010024  | Fastener, Bolt, HHCS, 5/16"-18 x 2", Grade 8 | 15  |
| 2    | 010090  | Fastener, Washer, Lock, 5/16", Grade 8       | 15  |
| 3    | 015694  | Cap, Grease, W-1, Red, Plastic, Tapered      | 5   |
| 4    | 025091  | Fastener, Bolt, Shoulder, 3/8" x 1/2"        | 5   |
| 5    | 025092  | Bushing, Bronze, 3/8" x 1/2" x 5/16"         | 5   |
| 6    | 028778V | Blade, Flat Finish, 8" x 17", Gold           | 5   |
| 7    | 040833  | Ring, Stabilizer, 1200VG, Standard, 5-Blade  | 1   |
| 8    | 067588  | Assembly, Spider, Right Hand, 5-Blade        | 1   |

## SECTION 1 PARTS

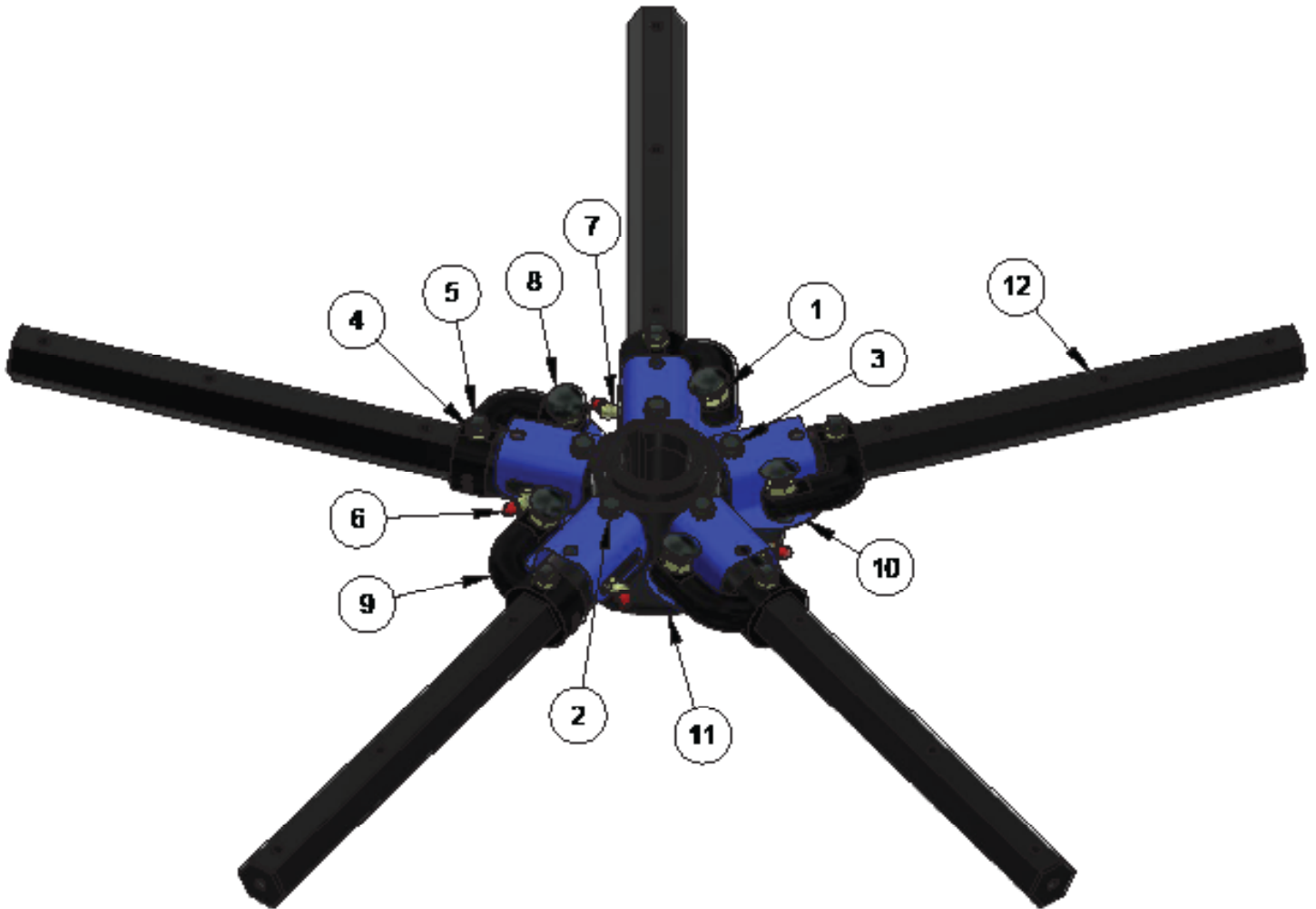
### Spider Assembly - Left Hand



| ITEM | PART # | DESCRIPTION                               | QTY |
|------|--------|---|-----|
| -    | 067587 | Assembly, Spider, Left Hand               | -   |
| 1    | 010050 | Fastener, Nut, Hex, 1/2"-13               | 5   |
| 2    | 015682 | Fastener, External Tooth, 3/8"            | 5   |
| 3    | 015683 | Fastener, Bolt, Hex Head, 3/8"-16 x 7/8"  | 5   |
| 4    | 015684 | Fastener, Nut, Hex, 3/8"-16               | 5   |
| 5    | 015686 | Fastener, Bolt, SQHSS, 3/8"-16 x 1"       | 5   |
| 6    | 015692 | Cap, Grease, 1/4", Plastic, Red           | 5   |
| 7    | 024755 | Fitting, Grease, 1/8"-27 NPT, 45°         | 5   |
| 8    | 028216 | Fastener, Bolt, 1/2"-13 x 1-1/2", Grade 8 | 5   |
| 9    | 033034 | Lever, Lift, Universal                    | 5   |
| 10   | 040792 | Clip, Spider Spring, 46-48                | 5   |
| 11   | 067586 | Boss, Spider, Machined                    | 1   |
| 12   | 069909 | Arm, Trowel, 46", for 5 Point Spider      | 5   |

# Spider Assembly - Right Hand

## SECTION 1 PARTS



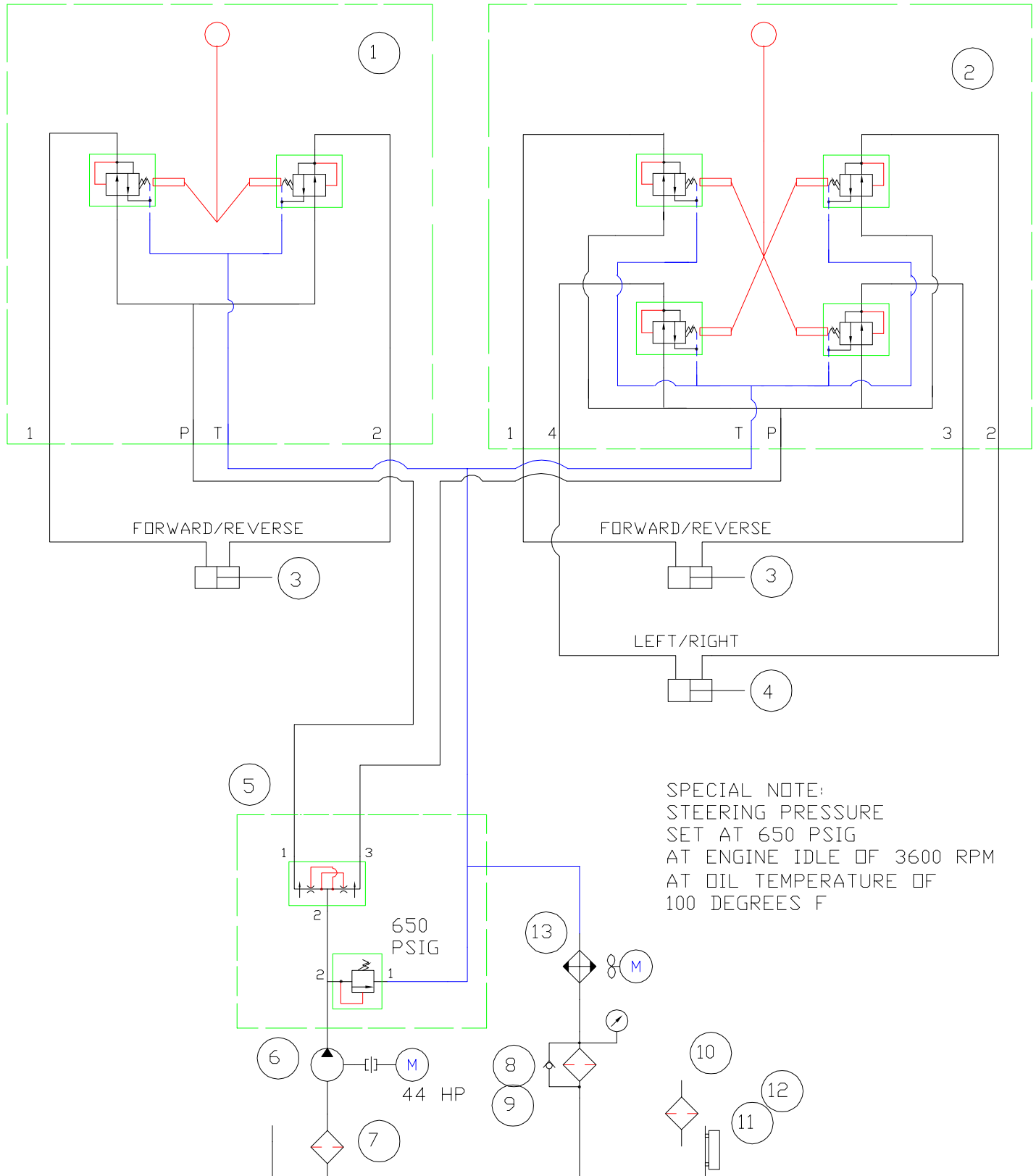
| ITEM | PART # | DESCRIPTION                               | QTY |
|------|--------|---|-----|
| -    | 067588 | Assembly, Spider, Right Hand              | -   |
| 1    | 010050 | Fastener, Nut, Hex, 1/2"-13               | 5   |
| 2    | 015682 | Fastener, External Tooth, 3/8"            | 5   |
| 3    | 015683 | Fastener, Bolt, Hex Head, 3/8"-16 x 7/8"  | 5   |
| 4    | 015684 | Fastener, Nut, Hex, 3/8"-16               | 5   |
| 5    | 015686 | Fastener, Bolt, SQHSS, 3/8"-16 x 1"       | 5   |
| 6    | 015692 | Cap, Grease, 1/4", Plastic, Red           | 5   |
| 7    | 024755 | Fitting, Grease, 1/8"-27 NPT, 45°         | 5   |
| 8    | 028216 | Fastener, Bolt, 1/2"-13 x 1-1/2", Grade 8 | 5   |
| 9    | 033034 | Lever, Lift, Universal                    | 5   |
| 10   | 040792 | Clip, Spider Spring, 46-48                | 5   |
| 11   | 067586 | Boss, Spider, Machined                    | 1   |
| 12   | 069909 | Arm, Trowel, 46", for 5 Point Spider      | 5   |

## SECTION 1 PARTS

# Hydraulic Steering Schematic

LEFT HAND JOYSTICK  
STEERING CONTROL

RIGHT HAND JOYSTICK  
STEERING CONTROL



# Hydraulic Component Kit

## SECTION 1 PARTS

### Bill of Material - MSP475 Hydraulic System Components

| ITEM # | AEC PART # | DESCRIPTION                         | QTY |
|--------|------------|-------------------------------------|-----|
| -      | 069747     | Kit, Component, Hydraulic, MSP475   | 1   |
| 1      | 064817     | Joystick, Single Axis               | 1   |
| 2      | 064818     | Joystick, Dual Axis                 | 1   |
| 3      | 048661     | Cylinder, Steering, Forward/Reverse | 2   |
| 4      | 048660     | Cylinder, Steering, Left/Right      | 1   |
| 5      | 046735     | Manifold, Steering                  | 1   |
| 6      | 046738     | Pump, Gear                          | 1   |
| 7      | 046732     | Strainer, Suction                   | 1   |
| 8      | 049978     | Filter, Return Line                 | 1   |
| 9      | 046241     | Gauge, Filter                       | 1   |
| 10     |            | Breather / Dip Stick                | 1   |
| 11     | 052929     | Indicator, Sight Level              | 1   |
| 12     | 045948     | Plug, Magnetic Tank                 | 1   |
| 13     | 052930     | Cooler, Air / Oil                   | 1   |
| 14     | 063341     | Controller, Foot Pedal              | 1   |
| 15     | 069748     | Kit, Fitting, Hydraulic, MSP475     | 1   |
| 16     | 069749     | Kit, Fitting, Hydraulic, MSP475     | 1   |

## SECTION 1 PARTS

## Hydraulic Fitting Kit / Hose Kits

### Bill of Material - MSP475 Hydraulic System Fitting Kit

| ITEM # | AEC PART # | DESCRIPTION                                      | QTY |
|--------|------------|--|-----|
| -      | 069748     | Kit, Fitting, Hydraulic, MSP475                  | 1   |
| 1      | 045922     | Fitting, Straight Thread Connector               | 8   |
| 2      | 045915     | Fitting, Hydraulic                               | 3   |
| 3      | 052786     | Fitting, Straight Thread Connector               | 2   |
| 4      | 047518     | Fitting, ML Connector                            | 1   |
| 5      | 049058     | Fitting, Elbow, 90°, Male                        | 1   |
| 6      | 045928     | Fitting, Straight Thread Connector               | 8   |
| 7      | 046777     | Fitting, Straight Thread Connector               | 2   |
| 8      | 052889     | Fitting, Male JIC x Male BSPP/WC Washer & O-Ring | 2   |
| 9      | 043476     | Fitting, Test Point                              | 1   |
| 10     |            | Fitting  | 1   |

### Bill of Material - MSP475 Hydraulic System Hoses

| HOSE # | PART # | CUT LENGTH (IN) | CONNECTION DETAIL                                    | QTY |
|--------|--------|-----------------|--|-----|
| -      | 069749 | -               | Kit, Hose, Hydraulic, MSP475                         | 1   |
| 1      |        | 45              | Forward / Reverse for Left / Right Joystick Steering | 4   |
| 2      |        | 62              | Left Hand Joystick to Manifold                       | 1   |
| 3      |        | 25              | Right Hand Joystick to Manifold                      | 1   |
| 4      |        | 58              | Left / Right for Right Hand Joystick Steering        | 2   |
| 5      |        | 20              | Right Hand Joystick to T1 Manifold                   | 1   |
| 6      |        | 66              | Left Hand Joystick to T1 Manifold                    | 1   |
| 7      |        | 28              | Auxiliary Pump out to Manifold P Port                | 1   |
| 8      |        | 50              | Cooler to T2 Manifold                                | 1   |
| 9      |        | 18              | Cooler to Return Filter                              | 1   |
| 10     |        | 12              | Auxiliary Pump Suction to Tank                       | 1   |



# **SECTION 2 DECALS**

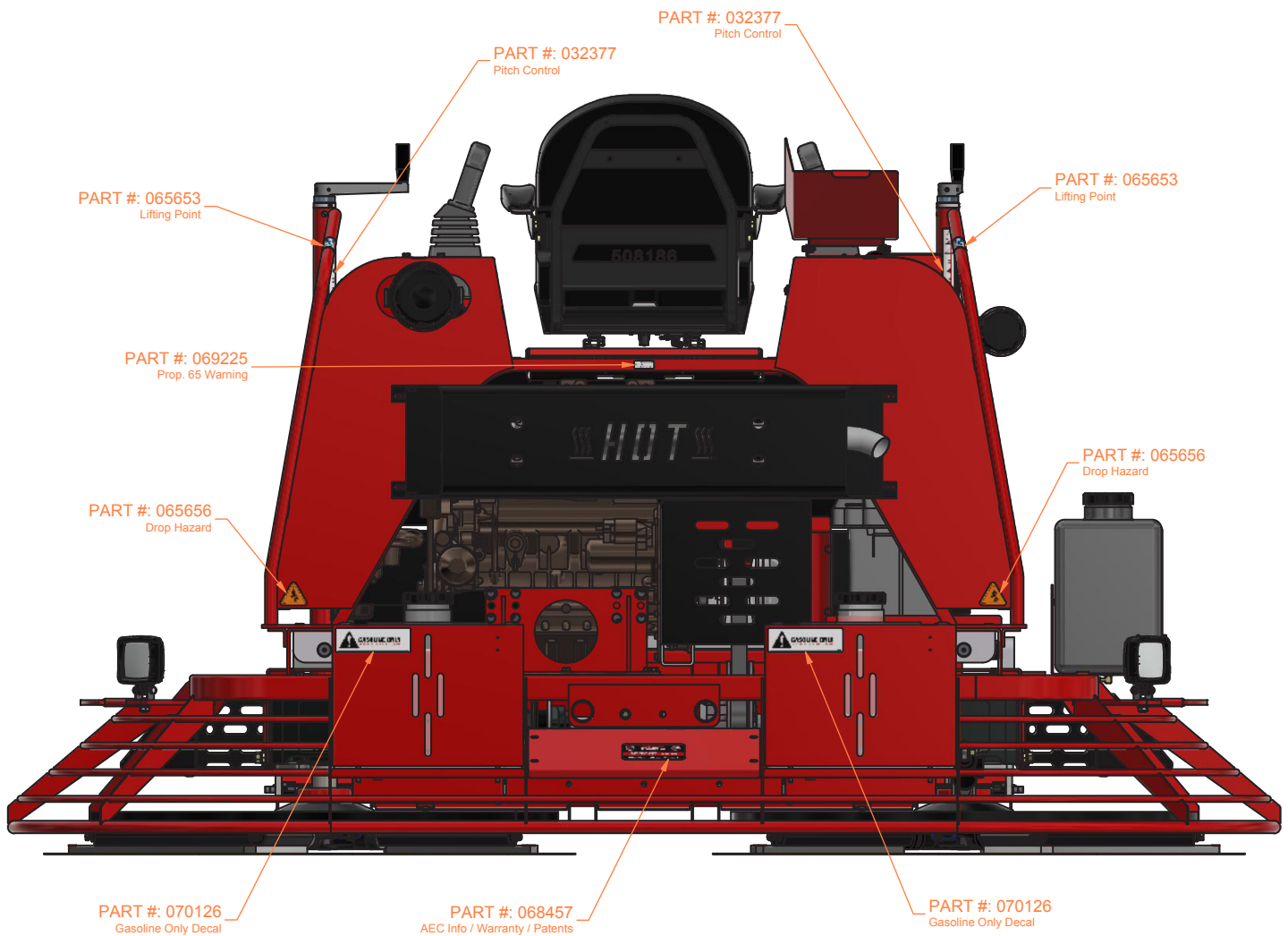
## SECTION 2 DECALS

### Decals - Front (Kit #: 069116)



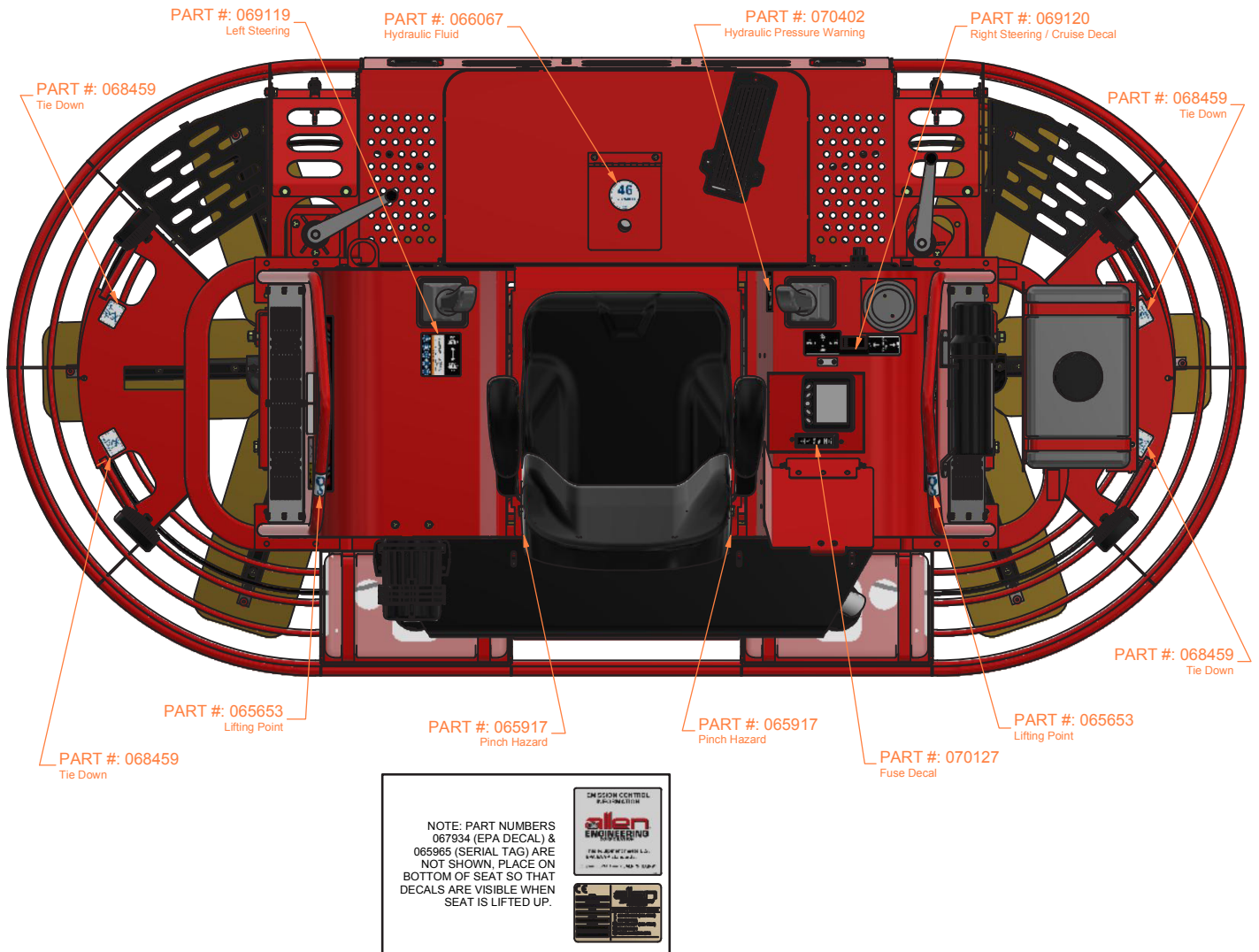
# Decals - Back (Kit #: 069116)

## SECTION 2 DECALS



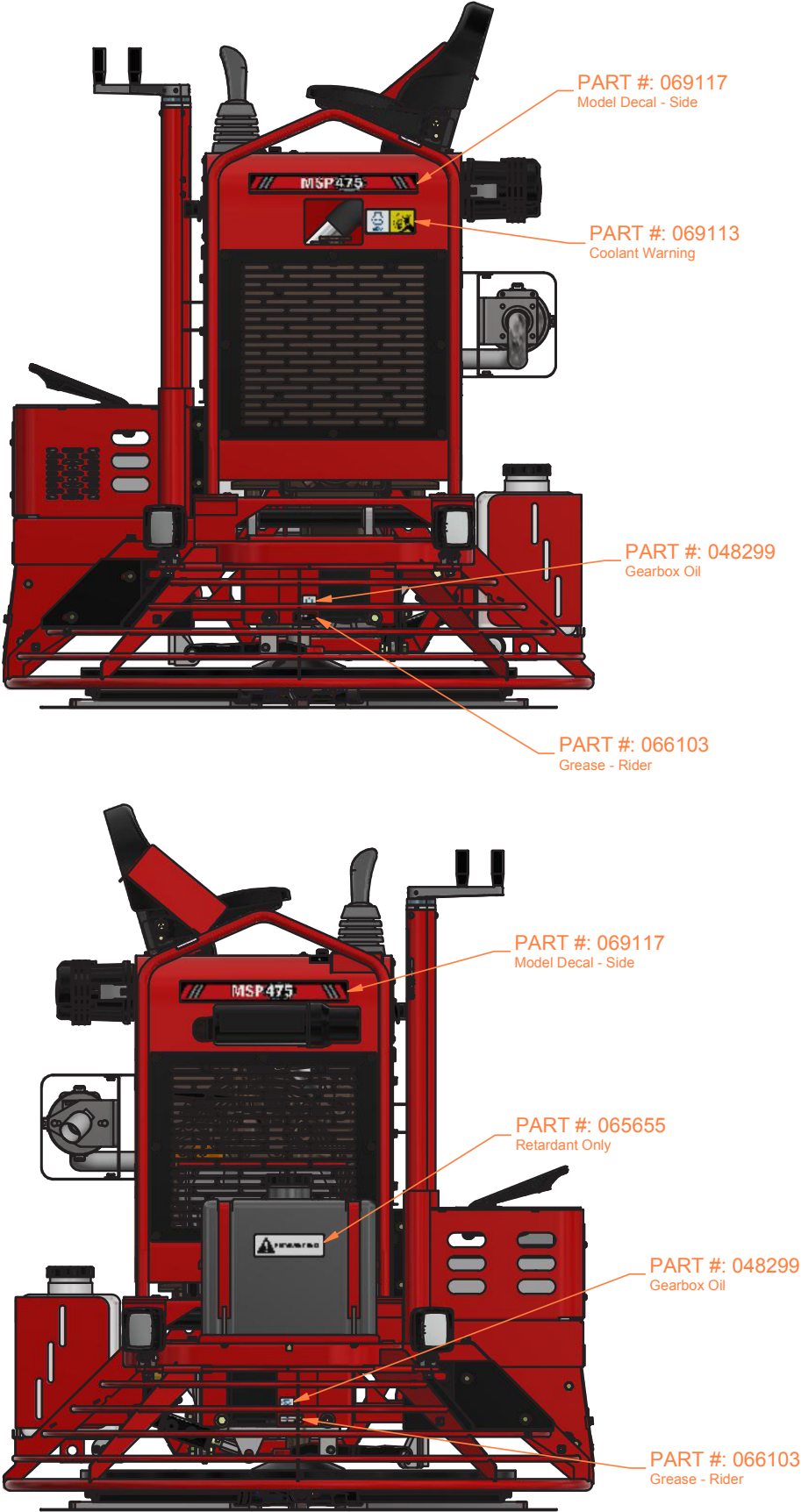
## SECTION 2 DECALS

## Decals - Top (Kit #: 069116)



# Decals - Left / Right (Kit #: 069116)

## SECTION 2 DECALS



## Revision Detail

| MANUAL REVISION DETAIL |               |                      |             |
|------------------------|---------------|----------------------|-------------|
| REVISION #             | REVISION DATE | REVISION REFERENCE # | REVISION BY |
| -                      | 11/19         | Initial Release      | MW          |
| A                      | 02/21         | MN 21-003            | MW          |
| B                      | 01/22         | Updated Covers       | MK          |

Copyright © 2019 Allen Engineering Corporation  
All rights reserved

All information, specifications, and illustrations in this manual are subject to change without notice and are based on the latest information at the time of publication. No part of this manual may be reproduced or transmitted in any form or by any means, electronics or mechanical, for any purpose, without the express written permission of Allen Engineering Corporation (AEC). AEC assumes no responsibility or liability for any errors or inaccuracies that may appear in this manual.

Allen Products are covered under one or more of the following patent numbers:  
10,100,537; 9,068,301; 9,068,300; 8,360,680; 7,690,864; 7,114,876B1; 6,857,815B2; 6,582,153  
With other Patents Pending.

Printed in U.S.A.



**AEC FACTORY & HEADQUARTERS**

819 S. 5TH STREET  
PARAGOULD, ARKANSAS 72450  
870.236.7751  
800.643.0095 (TOLL FREE (USA ONLY))

**MAILING**

PO BOX 819  
PARAGOULD, ARKANSAS 72451

**ALLENENG.COM**

CONNECT WITH US ON SOCIAL

